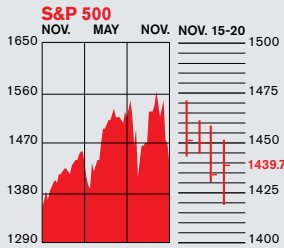


FIGURES OF THE WEEK

STOCKS



COMMENTARY

When the smoke cleared, stocks were off by over 200 points. It was another week of credit crunch fears. This week it was the turn of Fannie Mae and Freddie Mac to take big hits, 41% and 39%, respectively. Credit fears also helped push down shares of General Motors by 16%.

Data: Bloomberg Financial Markets, Reuters

U.S. MARKETS

	NOV. 20	WEEK	% CHANGE	
			YEAR TO DATE	LAST 12 MONTHS
S&P 500	1439.7	-2.1	1.5	2.8
Dow Jones Industrials	13,010.1	-1.7	4.4	5.6
NASDAQ Composite	2596.8	-1.8	7.5	5.9
S&P MidCap 400	834.7	-3.3	3.8	3.4
S&P SmallCap 600	389.6	-3.6	-2.6	-2.8
DJ Wilshire 5000	14,450.0	-2.3	1.6	2.8

SECTORS

	NOV. 20	WEEK	% CHANGE	
			YEAR TO DATE	LAST 12 MONTHS
BusinessWeek 50*	883.1	-1.3	10.6	11.4
BW Info Tech 100**	541.3	-1.0	21.0	22.9
S&P/Citigroup Growth	687.2	-1.0	5.3	5.7
S&P/Citigroup Value	748.1	-3.2	-2.1	0.0
S&P Energy	561.7	1.1	23.3	28.5
S&P Financials	390.7	-7.9	-21.1	-19.5
S&P REIT	162.5	-6.3	-18.3	-17.9
S&P Transportation	267.2	-3.0	1.3	-3.0
S&P Utilities	214.5	2.3	15.0	18.0
S&P GSTI Internet	212.0	-2.1	6.1	5.9
PSE Technology	935.5	-1.7	6.8	5.2

*March 19, 1999=1000 **February 7, 2000=1000

GLOBAL MARKETS

	NOV. 20	WEEK	% CHANGE	
			YEAR TO DATE	LAST 12 MONTHS
S&P Euro Plus (U.S. Dollar)	2255.4	-1.6	13.4	18.5
London (FT-SE 100)	6226.5	-3.2	0.1	0.4
Paris (CAC 40)	5506.7	-1.9	-0.6	1.0
Frankfurt (DAX)	7630.3	-2.0	15.7	18.3
Tokyo (NIKKEI 225)	15,211.5	-1.9	-11.7	-3.3
Hong Kong (Hang Seng)	27,771.2	-4.8	39.1	46.5
Toronto (S&P/TSX Composite)	13,459.8	-2.3	4.3	8.4
Mexico City (IPC)	29,050.5	-2.0	9.8	20.1

FUNDAMENTALS

	NOV. 19	WEEK AGO	YEAR AGO
S&P 500 Dividend Yield	1.96%	1.89%	1.76%
S&P 500 P/E Ratio (Trailing 12 mos.)	17.9	18.3	17.6
S&P 500 P/E Ratio (Next 12 mos.)*	14.3	14.7	15.2
First Call Earnings Revision*	-7.49%	-6.42%	-1.51%

*First Call Corp.

TECHNICAL INDICATORS

	NOV. 19	WEEK AGO	READING
S&P 500 200-day average	1484.0	1483.9	Negative
Stocks above 200-day average	31.0%	38.0%	Positive
Options: Put/call ratio	1.07	0.99	Positive
Insiders: Vickers NYSE Sell/buy ratio	2.91	3.11	Negative

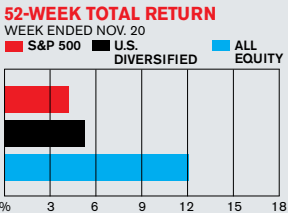
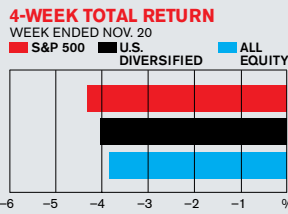
BEST-PERFORMING GROUPS

	LAST MONTH %		LAST 12 MONTHS %
Gold Mining	11.8	Education Services	105.5
Education Services	11.0	Fertilizers & Ag. Chems.	100.8
Home Furnishings	10.3	Constr. & Engineering	71.6
Coal	10.0	Health-Care Services	66.3
Personal Products	9.9	Divsfd. Metals & Mining	59.7

WORST-PERFORMING GROUPS

	LAST MONTH %		LAST 12 MONTHS %
Thriffs & Mtge. Finance	-43.2	Homebuilding	-61.3
IT Consulting	-26.1	Thriffs & Mtge. Finance	-56.1
Automobiles	-22.6	Real Estate Mgt. & Dvpt.	-40.3
Real Estate Mgt. & Dvpt.	-22.5	Motorcycles	-39.2
Metal & Glass Containers	-16.7	Department Stores	-36.1

MUTUAL FUNDS



Data: Morningstar Inc.

EQUITY FUND CATEGORIES

4-WEEK TOTAL RETURN		52-WEEK TOTAL RETURN	
	%		%
LEADERS			
Bear Market	5.8	Pacific/Asia ex-Japan Stk.	58.8
Long Government	3.0	Latin America Stock	57.3
Inflation-Protected Bond	2.8	Diversified Emerg. Mkts.	43.8
World Bond	1.8	Specialty-Natural Res.	29.7
LAGGARDS			
Foreign Small/Mid Value	-7.4	Specialty-Financial	-10.0
Specialty-Communications	-7.4	Specialty-Real Estate	-7.9
Specialty-Financial	-7.3	Small Value	-6.2
Specialty-Real Estate	-6.9	Japan Stock	-4.7

EQUITY FUNDS

4-WEEK TOTAL RETURN		52-WEEK TOTAL RETURN	
	%		%
LEADERS			
ProFds UltSh Japan Inv	21.4	Direxn Lat Am Bull 2x	109.5
ProFds UltSh Japan Svc	21.3	AIM China I	98.3
JPMorgan India Select	15.8	AIM China A	97.7
JPMorgan India R	15.8	AIM China B	96.2
LAGGARDS			
ProFds UltJapan Svc	-19.7	ProFds UltSh Emg Mkts Svc	-63.8
ProFds UltJapan Inv	-19.7	ProFds UltSh Emg Mkts Inv	-63.5
Rgns Morg Kgn S Hi Inc A	-19.1	Direxn Emg Mkts Bear 2x	-55.4
ProFds USctr Mble Tlcm Svc	-19.1	iShrs DJ US Home Constr	-55.0

INTEREST RATES

KEY RATES

	NOV. 20	WEEK AGO	YEAR AGO
Money Market Funds	4.61%	4.65%	4.85%
90-Day Treasury Bills	3.24	3.40	5.06
2-Year Treasury Notes	3.16	3.54	4.77
10-Year Treasury Notes	4.05	4.27	4.60
30-Year Treasury Bonds	4.48	4.60	4.68
30-Year Fixed Mortgage †	6.25	6.25	6.03

† BanxQuote Inc.

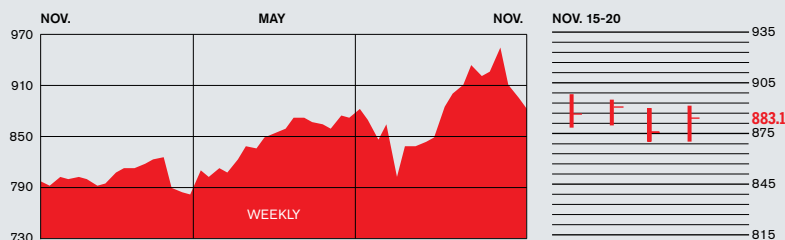
BLOOMBERG MUNI YIELD EQUIVALENTS

Taxable equivalent yields on AAA-rated, tax-exempt municipal bonds, assuming a 30% federal tax rate.

	10-YR. BOND	30-YR. BOND
General Obligations	3.86%	4.45%
Taxable Equivalent	5.51	6.36
Insured Revenue Bonds	4.00	4.67
Taxable Equivalent	5.71	6.67

FIGURES OF THE WEEK

THE BUSINESSWEEK FIFTY

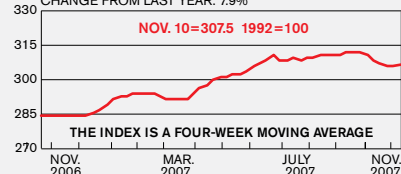


The BW50 index fell 1.3%, with financial sector companies once again the prime offenders. In fact, the six worst performers were financial companies. Synovus Financial fell 10.8%, but Morgan Stanley, Lehman Brothers, and Goldman Sachs weren't all that far behind in the race to the bottom. The plus side of the ledger was topped by two utilities: Constellation Energy Group and Sempra Energy.

BW PRODUCTION INDEX

INDUSTRIAL OUTPUT

CHANGE FROM LAST WEEK: 0.2%
CHANGE FROM LAST YEAR: 7.9%



The production index rose 0.2% to 306.1; the index had fallen the six previous weeks. Before calculation of the four-week moving average, the index rose a healthier 0.9% to 307.9. On a seasonally adjusted basis, only auto production and crude-oil refining were off this week. Truck production jumped 14.3%. While not in double-digits, coal did have a strong 5.7% rise, while steel was up 4.1%.

Information on each of the index components is at businessweek.com.
BW production index Copyright 2007 by the McGraw-Hill Companies

COMPANY PERFORMANCE

RANK	COMPANY	% CHANGE		RANK	COMPANY	% CHANGE	
		WEEK	SINCE 3/1/07			WEEK	SINCE 3/1/07
1	Google	1.1	44.3	26	Allegheny Technologies	-3.0	-9.0
2	Coach	0.9	-25.4	27	Oracle	2.5	25.9
3	Gilead Sciences	-0.4	22.3	28	Starbucks	-4.7	-25.2
4	Nucor	-2.2	-14.6	29	Moody's	-7.9	-43.4
5	Questar	2.4	30.1	30	PepsiCo	1.1	18.5
6	Sunoco	-3.8	6.1	31	Stryker	1.5	15.9
7	Verizon Communications	-0.8	15.4	32	Best Buy	1.2	1.9
8	Colgate-Palmolive	1.0	17.0	33	United Parcel Service	-2.3	2.1
9	Goldman Sachs Group	-6.8	7.8	34	Apple	1.6	99.6
10	Paccar	-3.6	2.4	35	T. Rowe Price Group	-5.5	30.6
11	Amazon.com	2.4	105.4	36	Valero Energy	-4.0	16.0
12	Cognizant Tech. Solutions	-2.9	-33.6	37	Constellation Energy Group	4.0	27.9
13	Avon Products	1.7	12.2	38	TJX	-2.4	3.9
14	Varian Medical Systems	2.2	7.9	39	Morgan Stanley	-9.3	-18.9
15	Bed Bath & Beyond	-4.1	-23.8	40	Paychex	0.3	-4.3
16	CB Richard Ellis Group	-4.8	-44.6	41	Coventry Health Care	-1.4	5.8
17	Robert Half International	-4.0	-34.2	42	United States Steel	-5.5	-1.9
18	CME Group	-0.4	20.4	43	United Technologies	-0.8	13.2
19	Adobe Systems	3.1	7.8	44	Hershey	-3.1	-26.3
20	EOG Resources	-4.0	23.6	45	Black & Decker	-5.0	-3.2
21	Sempra Energy	3.7	1.8	46	Synovus Financial	-10.8	-29.1
22	Sherwin-Williams	-4.4	-9.6	47	Linear Technology	-3.1	-8.3
23	Lehman Brothers Holdings	-7.2	-17.1	48	AT&T	-3.3	3.3
24	Rockwell Collins	-3.2	8.2	49	XTO Energy	1.3	23.1
25	IMS Health	-1.2	-16.5	50	PNC Financial Svcs. Group	-3.3	-5.6

Data: Reuters