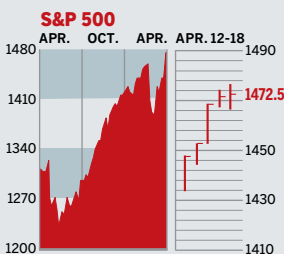


Figures of the Week

STOCKS



COMMENTARY

Record first-quarter profits at JPMorgan Chase pushed the market into overdrive this week. Sallie Mae's shares soared 34% on news of its \$25 billion buyout by private equity. The deal also boosted other stocks that investors consider a target, such as Countrywide Financial, which rose 14%. Meanwhile, MedImmune climbed 23% on reports it's in talks with a suitor.

Data: Bloomberg Financial Markets, Reuters

U.S. MARKETS

	APR. 18	WEEK	% CHANGE YEAR TO DATE	LAST 12 MONTHS
S&P 500	1472.5	2.3	3.8	12.6
Dow Jones Industrials	12,803.8	2.6	2.7	13.6
NASDAQ Composite	2510.5	2.1	3.9	6.6
S&P MidCap 400	875.3	1.7	8.8	9.2
S&P SmallCap 600	423.2	1.7	5.8	6.5
DJ Wilshire 5000	14,858.4	2.2	4.5	12.3

SECTORS

	APR. 17	WEEK AGO	YEAR AGO
BusinessWeek 50*	824.2	1.9	3.2
BW Info Tech 100**	461.1	1.8	3.0
S&P/Citigroup Growth	675.2	2.3	3.5
S&P/Citigroup Value	796.1	2.4	4.2
S&P Energy	482.2	1.2	5.9
S&P Financials	496.8	3.9	0.3
S&P REIT	207.3	1.3	4.3
S&P Transportation	281.4	3.5	6.7
S&P Utilities	209.9	1.2	12.5
GSTI Internet	210.8	0.4	5.6
PSE Technology	915.5	2.3	4.6

*March 19, 1999=1000 **February 7, 2000=1000

GLOBAL MARKETS

	APR. 18	WEEK	% CHANGE YEAR TO DATE	LAST 12 MONTHS
S&P Euro Plus (U.S. Dollar)	2180.5	2.3	9.6	29.8
London (FT-SE 100)	6449.4	0.6	3.7	6.7
Paris (CAC 40)	5836.0	1.5	5.3	14.5
Frankfurt (DAX)	7282.3	1.8	10.4	23.4
Tokyo (NIKKEI 225)	17,667.3	0.0	2.6	2.5
Hong Kong (Hang Seng)	20,777.1	1.6	4.1	24.9
Toronto (S&P/TSX Composite)	13,712.0	2.3	6.2	10.2
Mexico City (IPC)	29,559.5	1.0	11.8	49.1

FUNDAMENTALS

	APR. 17	WEEK AGO	YEAR AGO
S&P 500 Dividend Yield	1.79%	1.82%	1.77%
S&P 500 P/E Ratio (Trailing 12 mos.)	17.6	17.3	17.9
S&P 500 P/E Ratio (Next 12 mos.)*	15.2	15.0	14.9
First Call Earnings Surprise*	4.90%	12.50%	7.13%

*First Call Corp.

TECHNICAL INDICATORS

	APR. 17	WEEK AGO	YEAR AGO
S&P 500 200-day average	1370.0	1364.7	Positive
Stocks above 200-day average	78.0%	76.0%	Negative
Options: Put/call ratio	0.88	0.82	Positive
Insiders: Vickers NYSE Sell/buy ratio	5.41	6.04	Negative

BEST-PERFORMING GROUPS

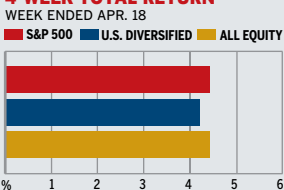
	LAST MONTH %	LAST 12 MONTHS %
Coal	19.2	140.7
Health-Care Facilities	16.4	47.3
Commercial Printing	15.0	39.3
Tires & Rubber	14.3	38.7
Divsfd. Metals & Mining	13.9	37.2
Tires & Rubber	13.9	37.2
Power & Energy Traders	13.9	37.2
Leisure Products	13.9	37.2
Electric Utilities	13.9	37.2
Intgrd. Telecmm. Svcs.	13.9	37.2

WORST-PERFORMING GROUPS

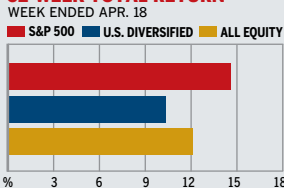
	LAST MONTH %	LAST 12 MONTHS %
Electric Mfg. Svcs.	-4.4	-30.2
Employment Services	-3.8	-27.9
Forest Products	-2.2	-22.2
Constr. Materials	-1.3	-14.0
Building Products	-1.2	-12.5
Homebuilding	-1.2	-12.5
Electric Mfg. Svcs.	-1.2	-12.5
Gold Mining	-1.2	-12.5
Education Services	-1.2	-12.5
Computer Retailers	-1.2	-12.5

MUTUAL FUNDS

4-WEEK TOTAL RETURN



52-WEEK TOTAL RETURN



Data: Standard & Poor's

EQUITY FUND CATEGORIES

4-WEEK TOTAL RETURN	%	52-WEEK TOTAL RETURN	%
LEADERS			
Latin America	11.5	Utilities	34.7
Pacific/Asia ex-Japan	8.7	Latin America	32.2
Precious Metals	8.5	Pacific/Asia ex-Japan	28.6
Diversified Emerging Mkts.	8.4	Real Estate	27.8
LAGGARDS			
Japan	-0.5	Japan	-6.8
Real Estate	1.9	Technology	3.1
Financial	2.7	Small-cap Growth	4.3
Domestic Hybrid	2.7	Mid-cap Growth	6.8

EQUITY FUNDS

4-WEEK TOTAL RETURN	%	52-WEEK TOTAL RETURN	%
LEADERS			
DireXn. Lat. Am. Bull 2X Inv.	23.6	iShares MSCI Malaysia Idx.	57.9
ProShares Ultra Oil & Gas	18.6	ProFds. Utilities Ultrasector	52.2
DireXn. Emrg. Mkts. Bull 2X	17.6	iShares MSCI Singapore Idx.	50.3
DireXn. Cmdty. Bull 2X	16.2	E.I.I. Int. Property Instl	50.0
LAGGARDS			
DireXn. Emrg. Mkts. Short	-15.7	American Heritage Grth.	-40.0
ProShares UltSh. Oil & Gas	-15.7	DireXn. Emrg. Mkts. Short	-37.0
ProFds UltSh. Emrg. Mkts. Inv.	-13.7	DireXn. Dev. Mkts. Bear 2X	-28.8
ProShares UltSh. Health Care	-11.4	SPDRS&P Homebuilders ETF	-24.8

INTEREST RATES

KEY RATES

	APR. 18	WEEK AGO	YEAR AGO
Money Market Funds	4.87%	4.87%	4.29%
90-Day Treasury Bills	4.97	5.02	4.71
2-Year Treasury Notes	4.64	4.72	4.83
10-Year Treasury Notes	4.65	4.74	4.98
30-Year Treasury Bonds	4.82	4.91	5.08
30-Year Fixed Mortgage †	6.17	6.20	6.42

† BanxQuote Inc.

BLOOMBERG MUNI YIELD EQUIVALENTS

Taxable equivalent yields on AAA-rated, tax-exempt municipal bonds, assuming a 30% federal tax rate.

	10-YR. BOND	30-YR. BOND
General Obligations	3.90%	4.29%
Taxable Equivalent	5.57	6.13
Insured Revenue Bonds	4.05	4.57
Taxable Equivalent	5.79	6.53

THE WEEK AHEAD

CONSUMER CONFIDENCE

Tuesday, Apr. 24, 10 a.m., EDT »

The Conference Board's April consumer confidence index is forecast to have eased to 105.2, from 107.2 in March. That's the median forecast of economists surveyed by Action Economics

DURABLE GOODS ORDERS

Wednesday, Apr. 25, 8:30 a.m., EDT » March durable goods orders most likely grew 2.5%, after rebounding 1.7% in February.

NEW HOME SALES

Wednesday, Apr. 25, 10 a.m. EDT » New home sales in March probably edged up to an annual rate of 0.89 million units. February sales stood at a pace of 0.85 million houses.

BEIGE BOOK

Wednesday, Apr. 25, 2 p.m. EDT » The Federal Reserve releases its summary of economic conditions ahead of the May 9 monetary policy meeting. Economists expect the Fed to hold interest rates at 5.25%.

GROSS DOMESTIC PRODUCT

Friday, Apr. 27, 8:30 a.m., EDT » First-quarter real gross domestic product probably slowed to an annualized growth rate of 2.1%, after a 2.5% gain in the prior period.

EMPLOYMENT COST INDEX

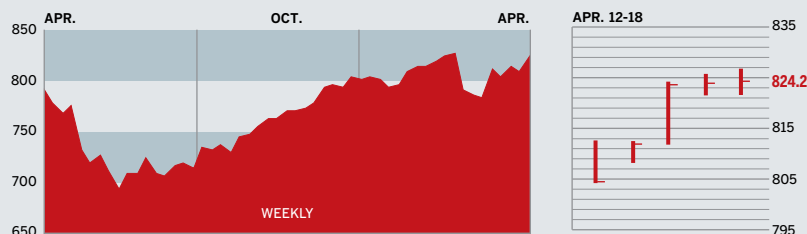
Friday, Apr. 27, 8:30 a.m., EDT » Compensation most likely grew 0.9% in the first quarter, following a 0.8% gain in the fourth quarter of 2006.

The *BusinessWeek* production index improved to 293.5 for the week ended Apr. 7, an 8.2% gain from a year ago. Before calculation of the four-week moving average, the index jumped to 297.5.

BusinessWeek .com

For the BW50, more investment data, and the components of the production index visit www.businessweek.com/extras.

THE BUSINESSWEEK FIFTY



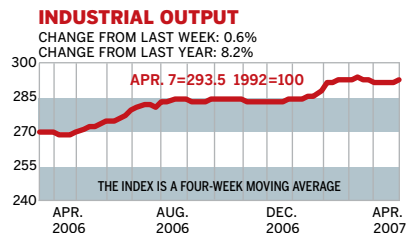
With good news all around the market, the BW50 rose 1.9%. Linear Technology climbed 14.5% after announcing a stock buyback, and both Moody's and Amazon.com jumped on analyst upgrades. Black & Decker increased 8% after first-quarter revenues exceeded expectations, but Varian Medical Systems dropped 6% after missing sales targets.

COMPANY PERFORMANCE

RANK	COMPANY	WEEK	% CHANGE SINCE 3/1/06	RANK	COMPANY	WEEK	% CHANGE SINCE 3/1/06
1	Google	2.5	5.9	26	Allegheny Technologies	2.3	11.5
2	Coach	2.9	11.8	27	Oracle	0.8	14.0
3	Gilead Sciences	2.3	9.6	28	Starbucks	0.8	0.3
4	Nucor	-1.1	8.1	29	Moody's	12.0	4.9
5	Questar	0.4	11.6	30	Pepsico	4.3	4.4
6	Sunoco	-0.8	13.9	31	Stryker	2.1	11.4
7	Verizon Communications	0.1	0.1	32	Best Buy	3.7	5.1
8	Colgate-Palmolive	1.3	-1.0	33	United Parcel Service	1.3	1.7
9	Goldman Sachs Group	4.7	7.4	34	Apple	-2.4	6.8
10	Paccar	0.4	7.1	35	T. Rowe Price Group	5.6	9.5
11	Amazon.com	7.9	14.9	36	Valero Energy	-3.6	12.9
12	Cognizant Technology Solutions	5.6	-2.6	37	Constellation Energy Group	1.7	14.0
13	Avon Products	2.7	5.4	38	TJX	2.0	3.2
14	Varian Medical Systems	-5.9	-0.1	39	Morgan Stanley	3.0	9.2
15	Bed Bath & Beyond	1.8	3.9	40	Paychex	-0.2	-9.4
16	CB Richard Ellis Group	8.8	9.6	41	Coventry Health Care	3.0	10.7
17	Robert Half International	4.2	-4.9	42	United States Steel	2.8	19.2
18	Chicago Mercantile Exchange Hldgs	1.5	3.6	43	United Technologies	4.4	2.0
19	Adobe Systems	2.1	9.5	44	Hershey	-1.4	3.1
20	EOG Resources	-0.7	10.2	45	Black & Decker	7.8	4.9
21	Sempra Energy	0.2	6.2	46	Synovus Financial	2.1	1.9
22	Sherwin-Williams	-0.2	-2.2	47	Linear Technology	14.5	8.6
23	Lehman Brothers Holdings	8.7	5.8	48	AT&T	0.1	5.9
24	Rockwell Collins	-0.8	0.0	49	XTO Energy	-1.7	7.4
25	IMS Health	0.8	3.4	50	PNC Financial Services Group	4.6	2.8

Data: Reuters

BW PRODUCTION INDEX



The Production Index registered its biggest gain since January. Before calculation of the four-week moving average, the index zoomed up to 297.5, from 292 in the previous period. On a seasonally adjusted basis all but one component showed an increase. The biggest gain came in truck assemblies, followed by a sizeable gain in coal output. More modest increases came in autos, electric-power production, lumber, and rail-freight traffic. On the negative side was steel.

Information on each of the index components is at www.businessweek.com. BW production index Copyright 2006 by the McGraw-Hill Companies

ONLINE RESOURCES

BW50 More information about BW50 companies is available online.

BUSINESSWEEK INVESTING Real-time market coverage and investment tools in partnership with Standard & Poor's.

MUTUAL FUNDS Search for funds, view BW ratings, and read Q&As with fund managers.

COLUMNS Hot stocks, takeover plays, and the latest strategies for managing your money.

BusinessWeek.com

For the BW50, more investment data, and the components of the production index visit www.businessweek.com/extras.