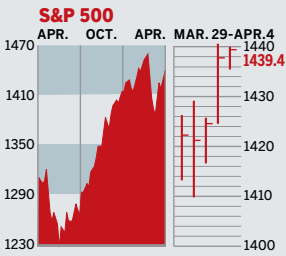


STOCKS



COMMENTARY

The major indexes reclaimed some lost ground, a move fueled in part by the drop in oil prices. Shares of First Data soared 20.3% on news of a buyout, and shareholders at Starwood Hotels applauded the resignation of its CEO. Altria Group, which completed its spin-off of Kraft Foods, climbed 8.9%. GE got the jitters over new U.S. tariffs on goods from China.

Data: Bloomberg Financial Markets, Reuters

U.S. MARKETS

	APR. 4	WEEK	YEAR TO DATE	% CHANGE LAST 12 MONTHS
S&P 500	1439.4	1.6	1.5	10.2
Dow Jones Industrials	12,530.1	1.9	0.5	11.8
NASDAQ Composite	2458.7	1.7	1.8	4.8
S&P MidCap 400	859.4	1.4	6.8	8.3
S&P SmallCap 600	417.2	1.6	4.3	5.7
DJ Wilshire 5000	14,539.5	1.6	2.3	10.1

SECTORS

BusinessWeek 50*	814.2	1.4	2.0	3.7
BW Info Tech 100**	452.0	2.4	1.0	12.5
S&P/Citigroup Growth	660.3	1.7	1.2	7.6
S&P/Citigroup Value	777.7	1.4	1.8	12.8
S&P Energy	472.6	1.6	3.7	14.6
S&P Financials	480.3	0.9	-3.0	8.5
S&P REIT	207.1	2.6	4.1	21.9
S&P Transportation	266.8	1.3	1.2	-6.2
S&P Utilities	205.8	1.4	10.3	29.9
GSTI Internet	210.1	2.2	5.2	6.1
PSE Technology	897.0	1.5	2.5	2.4

*March 19, 1999=1000 **February 7, 2000=1000

GLOBAL MARKETS

	APR. 4	WEEK	YEAR TO DATE	% CHANGE LAST 12 MONTHS
S&P Euro Plus (U.S. Dollar)	2107.1	3.1	5.9	23.6
London (FT-SE 100)	6364.7	1.6	2.3	6.0
Paris (CAC 40)	5739.0	3.4	3.6	10.2
Frankfurt (DAX)	7073.9	3.8	7.2	17.6
Tokyo (NIKKEI 225)	17,544.1	1.7	1.8	1.5
Hong Kong (Hang Seng)	20,209.7	3.4	1.2	25.5
Toronto (S&P/TSX Composite)	13,448.3	1.9	4.2	10.5
Mexico City (IPC)	29,370.9	4.5	11.1	48.6

FUNDAMENTALS

	APR. 3	WEEK AGO	YEAR AGO
S&P 500 Dividend Yield	1.81%	1.81%	1.72%
S&P 500 P/E Ratio (Trailing 12 mos.)	17.2	17.2	17.9
S&P 500 P/E Ratio (Next 12 mos.)*	14.8	15.3	14.8
First Call Earnings Surprise*	15.07%	3.91%	16.70%

*First Call Corp.

TECHNICAL INDICATORS

	APR. 3	WEEK AGO	YEAR AGO
S&P 500 200-day average	1360.8	1356.1	Positive
Stocks above 200-day average	74.0%	73.0%	Negative
Options: Put/call ratio	1.08	0.98	Positive
Insiders: Vickers NYSE Sell/buy ratio	6.47	6.63	Negative

BEST-PERFORMING GROUPS

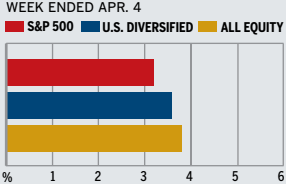
	LAST MONTH %		LAST 12 MONTHS %
Tires & Rubber	20.1	Tires & Rubber	129.4
Divsfd. Metals & Mining	16.9	Divsfd. Metals & Mining	44.3
Oil & Gas Refining	15.5	Power & Energy Traders	42.7
Steel	14.2	Steel	42.5
Coal	14.1	Leisure Products	38.3

WORST-PERFORMING GROUPS

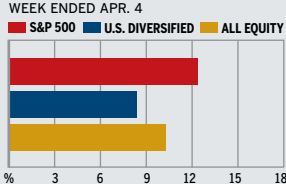
	LAST MONTH %		LAST 12 MONTHS %
Homebuilding	-12.7	Homebuilding	-32.7
Forest Products	-11.0	Electric Mfg. Svcs.	-30.2
Employment Services	-8.8	Photographic Products	-16.9
Electric Mfg. Svcs.	-5.6	Distillers & Vintners	-16.7
Dvsfd. Commercial Svcs.	-5.4	Gold Mining	-16.0

MUTUAL FUNDS

4-WEEK TOTAL RETURN



52-WEEK TOTAL RETURN



Data: Standard & Poor's

EQUITY FUND CATEGORIES

4-WEEK TOTAL RETURN	%	52-WEEK TOTAL RETURN	%
LEADERS			
Latin America	11.9	Utilities	31.6
Pacific/Asia ex-Japan	8.5	Latin America	30.1
Natural Resources	8.0	Pacific/Asia ex-Japan	27.8
Diversified Emerging Mkts.	7.9	Real Estate	25.2
LAGGARDS			
Japan	-0.5	Japan	-6.7
Financial	1.0	Technology	1.7
Domestic Hybrid	2.2	Small-cap Growth	2.8
International Hybrid	2.7	Health	3.7

EQUITY FUNDS

4-WEEK TOTAL RETURN	%	52-WEEK TOTAL RETURN	%
LEADERS			
DireXn. Lat. Am. Bull 2X Inv.	22.7	Dreyfus Prem. Grtr. China A	51.3
ProShares Ultra Oil & Gas	17.7	iShares MSCI Malaysia Idx.	48.5
DireXn. Emrg. Mkts. Bull 2X	16.6	Old Mut. Clay Finlay Ch. A	47.5
ProFunds UltraEmrg. Mkts.	15.4	iShares MSCI Singapore Idx.	46.5
LAGGARDS			
DireXn. Emrg. Mkts. Short	-15.8	American Heritage Grth.	-40.0
ProShares UltSh. Oil & Gas	-15.3	DireXn. Emrg. Mkts. Short	-37.2
ProFunds UltSh. Emrg. Mkts.	-14.7	SPDR S&P Homebuilders ETF	-26.4
ProShares UltSh. Utilities	-12.8	DireXn. Dev. Mkts. Bear 2X	-26.0

INTEREST RATES

KEY RATES

	APR. 4	WEEK AGO	YEAR AGO
Money Market Funds	4.87%	4.87%	4.24%
90-Day Treasury Bills	5.04	5.04	4.66
2-Year Treasury Notes	4.59	4.56	4.83
10-Year Treasury Notes	4.65	4.62	4.87
30-Year Treasury Bonds	4.84	4.83	4.91
30-Year Fixed Mortgage †	6.08	6.09	6.29

†BancQuote Inc.

BLOOMBERG MUNI YIELD EQUIVALENTS

Taxable equivalent yields on AAA-rated, tax-exempt municipal bonds, assuming a 30% federal tax rate.

	10-YR. BOND	30-YR. BOND
General Obligations	3.83%	4.21%
Taxable Equivalent	5.47	6.01
Insured Revenue Bonds	4.00	4.51
Taxable Equivalent	5.71	6.44

THE WEEK AHEAD

FEDERAL BUDGET *Wednesday, Apr. 11, 2 p.m. EDT* » The federal government probably ran a \$95 billion deficit in March, after a \$120 billion shortfall in February. That's the median forecast of economists surveyed by Action Economics.

FOMC MINUTES *Wednesday, Apr. 11, 2 p.m. EDT* » The Federal Reserve's Open Market Committee issues the minutes of the Mar. 20-21 monetary policy

meeting. Economists will try to get a feel for the central bank's views on housing, the subprime mortgage market, and stubborn inflation pressures.

EXPORT-IMPORT PRICES *Thursday, Apr. 12, 8:30 a.m. EDT* » March import prices probably climbed 0.5% on higher energy prices, after a February gain of 0.2%. Export prices likely grew 0.3% in March, on top of a 0.7% increase in the prior month.

PRODUCER PRICE INDEX *Friday, Apr. 13, 8:30 a.m. EDT* » Producer prices are expected to have risen 0.6% in March, following a 1.3% surge in February. Minus food and energy, wholesale prices probably rose 0.2%, after a 0.4% gain.

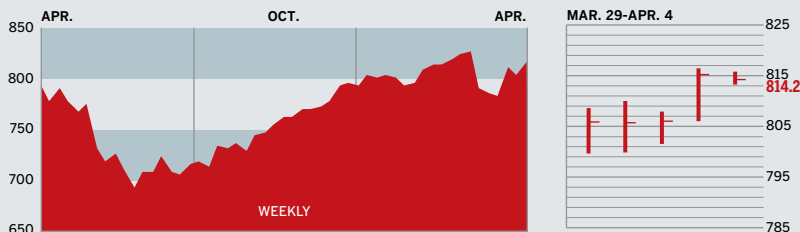
INTERNATIONAL TRADE *Friday, Apr. 13, 8:30 a.m. EDT* » The February trade deficit probably widened to \$60 billion, after narrowing to \$59.1 billion in January.

The *BusinessWeek* production index improved to 291.6 for the week ended Mar. 24, an 8.1% gain from a year ago. Before calculation of the four-week moving average, the index jumped to 293.3.

BusinessWeek .com

For the BW50, more investment data, and the components of the production index visit www.businessweek.com/extras.

THE BUSINESSWEEK FIFTY



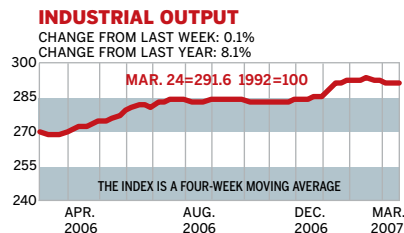
Investors bumped the BW50 up 1.4% this week. Acquisition rumors boosted Sunoco shares by 4.6% while higher-than-expected Medicare reimbursements pleased shareholders at Coventry Health Care. But the stock prices of Best Buy and Paychex swooned on earnings that were less than spectacular.

COMPANY PERFORMANCE

RANK	COMPANY	WEEK	% CHANGE SINCE 3/1/06	RANK	COMPANY	WEEK	% CHANGE SINCE 3/1/06
1	Google	2.0	4.8	26	Allegheny Technologies	5.4	8.3
2	Coach	3.6	9.4	27	Oracle	2.1	13.0
3	Gilead Sciences	3.9	8.9	28	Starbucks	0.2	1.4
4	Nucor	1.2	7.9	29	Moody's	-0.8	-5.7
5	Questar	1.5	8.9	30	Pepsico	1.3	0.9
6	Sunoco	4.6	13.6	31	Stryker	3.0	9.1
7	Verizon Communications	2.1	1.7	32	Best Buy	-1.8	3.0
8	Colgate-Palmolive	-1.0	-1.8	33	United Parcel Service	-0.7	-0.4
9	Goldman Sachs Group	1.0	3.5	34	Apple	1.1	11.4
10	Paccar	3.7	7.7	35	T. Rowe Price Group	2.4	4.2
11	Amazon.com	5.6	6.1	36	Valero Energy	2.9	14.6
12	Cognizant Technology Solutions	-2.9	-2.7	37	Constellation Energy Group	1.5	11.9
13	Avon Products	4.2	5.2	38	TJX	4.4	0.6
14	Varian Medical Systems	2.6	5.0	39	Morgan Stanley	1.9	6.5
15	Bed Bath & Beyond	3.5	2.4	40	Paychex	-3.3	-6.7
16	CB Richard Ellis Group	0.6	3.9	41	Coventry Health Care	4.2	7.9
17	Robert Half International	-7.9	-9.3	42	United States Steel	4.5	15.0
18	Chicago Mercantile Exchange Hldgs.	5.3	3.3	43	United Technologies	-0.7	-1.1
19	Adobe Systems	2.7	8.8	44	Hershey	0.9	5.3
20	EOG Resources	3.5	9.5	45	Black & Decker	2.0	-1.1
21	Sempra Energy	-0.5	2.6	46	Synovus Financial	1.2	1.2
22	Sherwin-Williams	0.3	-1.2	47	Linear Technology	-0.9	-4.0
23	Lehman Brothers Holdings	1.6	-3.0	48	AT&T	0.7	6.6
24	Rockwell Collins	1.0	2.9	49	XTO Energy	1.8	8.6
25	IMS Health	1.5	3.1	50	PNC Financial Services Group	1.0	-1.6

Data: Reuters

BW PRODUCTION INDEX



The Production Index managed its first increase in a month. Before calculation of the four-week moving average the index rebounded to 293.3, from 291.3 in the prior period. After seasonal adjustments the components were evenly split. Auto and truck assemblies both zipped higher, with electric power production and rail-freight traffic also rising. On the downside, lumber output retreated considerably. Meanwhile steel, coal, and crude-oil refining each posted very small declines.

Information on each of the index components is at www.businessweek.com. BW production index Copyright 2006 by the McGraw-Hill Companies

ONLINE RESOURCES

BW50 More information about BW50 companies is available online.

BUSINESSWEEK INVESTING Real-time market coverage and investment tools in partnership with Standard & Poor's.

MUTUAL FUNDS Search for funds, view BW ratings, and read Q&As with fund managers.

COLUMNS Hot stocks, takeover plays, and the latest strategies for managing your money.

BusinessWeek.com

For the BW50, more investment data, and the components of the production index visit www.businessweek.com/extras.