

Personal Finance Figures of the Week

STOCKS



COMMENTARY

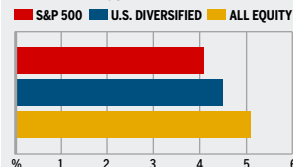
The confluence of tech profit worries and international tensions sent stocks sharply lower to end the week. The Dow plunged 122 points on July 12, and the tech-heavy NASDAQ shed nearly 2% to close the week down a lachrymose 3%. Traders sold on bad hardware and retail news, as well as new rounds of violence in Israel, Lebanon, and India.

Data: Bloomberg Financial Markets, Reuters

MUTUAL FUNDS

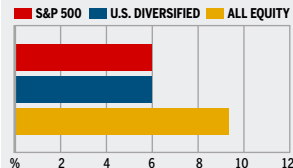
4-WEEK TOTAL RETURN

WEEK ENDED JULY 11



52-WEEK TOTAL RETURN

WEEK ENDED JULY 11



Data: Standard & Poor's

U.S. MARKETS

	JULY 12	WEEK	% CHANGE YEAR TO DATE	% CHANGE LAST 12 MONTHS
S&P 500	1258.6	-1.0	0.8	3.0
Dow Jones Industrials	11,013.2	-1.2	2.8	4.7
NASDAQ Composite	2090.2	-2.9	-5.2	-2.5
S&P MidCap 400	745.9	-1.7	1.1	5.1
S&P SmallCap 600	365.8	-2.2	4.3	5.0
DJ Wilshire 5000	12,648.8	-1.2	1.2	3.7

SECTORS

BusinessWeek 50*	708.5	-2.0	-4.5	-2.4
BW Info Tech 100**	365.8	-2.6	-3.8	0.3
S&P/Citigroup Growth	579.9	-1.1	-2.8	-0.8
S&P/Citigroup Value	677.3	-0.8	4.6	6.9
S&P Energy	430.8	0.8	15.6	19.4
S&P Financials	433.0	-0.6	1.6	7.2
S&P REIT	173.6	1.2	13.5	10.7
S&P Transportation	273.3	-3.5	9.4	30.4
S&P Utilities	165.7	0.7	3.8	1.2
GSTI Internet	165.2	-4.2	-19.5	-2.0
PSE Technology	759.9	-2.6	-9.2	-3.0

*Mar. 19, 1999=1000 **Feb. 7, 2000=1000

GLOBAL MARKETS

	JULY 12	WEEK	% CHANGE YEAR TO DATE	% CHANGE LAST 12 MONTHS
S&P Euro Plus (U.S. Dollar)	1663.7	0.2	10.1	20.9
London (FT-SE 100)	5860.6	0.6	4.3	12.3
Paris (CAC 40)	4941.7	0.4	4.8	14.6
Frankfurt (DAX)	5637.8	0.2	4.2	21.2
Tokyo (NIKKEI 225)	15,249.3	-1.8	-5.4	30.4
Hong Kong (Hang Seng)	16,522.2	1.6	11.1	16.8
Toronto (S&P/TSX Composite)	11,771.1	1.2	4.4	15.3
Mexico City (IPC)	19,419.4	-0.5	9.1	39.0

FUNDAMENTALS

	JULY 11	WEEK AGO	YEAR AGO
S&P 500 Dividend Yield	1.86%	1.84%	2.00%
S&P 500 P/E Ratio (Trailing 12 mos.)	17.0	17.1	19.3
S&P 500 P/E Ratio (Next 12 mos.)*	13.9	14.0	15.4
First Call Earnings Surprise*	8.63%	8.90%	1.91%

*First Call Corp.

TECHNICAL INDICATORS

	JULY 11	WEEK AGO	READING
S&P 500 200-day average	1263.7	1262.6	Negative
Stocks above 200-day average	55.0%	59.0%	Neutral
Options: Put/call ratio	0.85	0.80	Positive
Insiders: Vickers NYSE Sell/buy ratio	2.48	2.73	Neutral

BEST-PERFORMING GROUPS

	LAST MONTH %	LAST 12 MONTHS %
Steel	15.1	113.3
Oil & Gas Exploration	14.3	104.5
Gold Mining	13.9	65.0
Oil & Gas Refining	12.3	57.9
Oil & Gas Equip.	11.6	52.3

WORST-PERFORMING GROUPS

	LAST MONTH %	LAST 12 MONTHS %
Instrumentation	-11.2	-41.1
Comptr. Stge. & Perphs.	-10.6	-36.9
Electric Mfg. Svcs.	-9.6	-32.9
Educational Services	-9.4	-29.8
Tires & Rubber	-8.5	-26.9

EQUITY FUND CATEGORIES

4-WEEK TOTAL RETURN	%	52-WEEK TOTAL RETURN	%
LEADERS			
Latin America	23.5	Precious Metals	69.9
Precious Metals	18.8	Latin America	50.7
Natural Resources	13.8	Diversified Emrg. Mkts.	33.2
Diversified Emrg. Mkts.	12.9	Japan	31.2
LAGGARDS			
Technology	2.1	Technology	0.7
Domestic Hybrid	2.8	Health	2.4
Communications	3.2	Large-cap Growth	3.0
Health	3.5	Domestic Hybrid	4.7

EQUITY FUNDS

4-WEEK TOTAL RETURN	%	52-WEEK TOTAL RETURN	%
LEADERS			
DireXion L. Am. Bl. 2X Inv.	46.2	U.S. Global Invrs. Gold	104.9
ProFunds Prec. Mtls. Inv.	34.4	Midas	101.5
PFds. UH Emrg. Mkts. Inv.	34.1	U.S. Gbl. Inv. Prc. Mnl.	95.1
DireXn. Emrg. Mkts. Bl. 2X	29.8	ING Russia A	85.6
LAGGARDS			
PFds. Ush. Emrg. Mkts. Inv.	-29.3	Ameritor Investment	-75.0
DireXion Emrg. Mkts. Sht.	-27.7	American Heritage Growth	-33.3
ProFds. Sh. Prec. Mtls. Inv.	-19.1	ProFunds. Semidr. Inv.	-22.9
ProFunds UI Sh. Jap. Inv.	-18.2	American Heritage	-22.2

INTEREST RATES

KEY RATES

	JULY 12	WEEK AGO	YEAR AGO
Money Market Funds	4.74%	4.71%	2.77%
90-Day Treasury Bills	5.07	5.01	3.20
2-Year Treasury Notes	5.17	5.24	3.84
10-Year Treasury Notes	5.10	5.22	4.14
30-Year Treasury Bonds	5.14	5.27	4.39
30-Year Fixed Mortgage†	6.70	6.72	5.60

†BanxQuote, Inc.

BLOOMBERG MUNI YIELD EQUIVALENTS

Taxable equivalent yields on AAA-rated, tax-exempt municipal bonds, assuming a 30% federal tax rate.

	10-YR. BOND	30-YR. BOND
General Obligations	4.19%	4.53%
Taxable Equivalent	5.99	6.47
Insured Revenue Bonds	4.26	4.64
Taxable Equivalent	6.09	6.63

THE WEEK AHEAD

INDUSTRIAL PRODUCTION

Monday, July 17, 9:15 a.m.

EDT » June factory output is forecast to have bounced back 0.5%, after a 0.1% dip in May. That's the median forecast of economists surveyed by Action Economics. The factory utilization rate probably climbed to 81.9%, from 81.7% in May.

PRODUCER PRICE INDEX

Tuesday, July 18, 8:30 a.m.

EDT » Producer prices most

likely rose 0.3% in June, following a 0.2% gain in May. Excluding food and energy, wholesale prices probably increased 0.2% in June, after a 0.3% jump in May.

CONSUMER PRICE INDEX

Wednesday, July 19, 8:30 a.m.

EDT » Consumer prices for goods and services probably grew 0.3% in June, after a 0.4% jump in May. Less food and energy, the index likely posted a 0.2% rise, after three straight gains of 0.3%.

RESIDENTIAL CONSTRUCTION

Wednesday, July 19, 8:30 a.m.

EDT » Housing starts in June are expected to have slipped to an annual pace of 1.9 million. In Ma, starts stood at an yearly pace of 1.96 million.

LEADING INDICATORS

Thursday, July 20, 10 a.m.

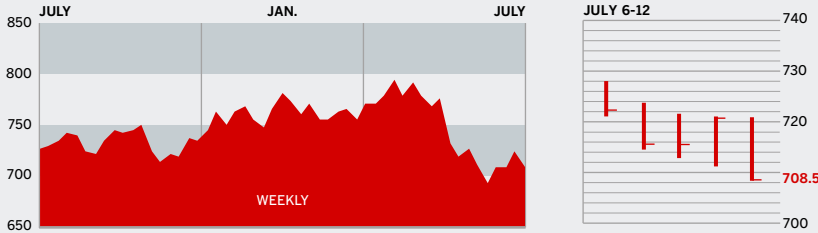
EDT » The Conference Board's index of leading economic indicators most likely edged up by 0.1% in June, after dropping 0.6% in May.

The BusinessWeek production index slipped to 281.3 for the week ended July 1, and stood 13.2% above the year-ago level. Before calculation of the four-week moving average, the index improved to 282.3.

BusinessWeek online

For the BW50, more investment data, and the components of the production index visit www.businessweek.com/extras

THE BUSINESSWEEK FIFTY



The BW50 closed the week down 2% on negative headlines out of tech and retail—in the already nervous context of escalating violence in the Middle East. Best Buy and Starbucks fell 10.8% and 8.3%, respectively, on consumer spending jitters. Disappointing earnings from EMC sent its shares down 7.7%; Apple fell 7.1%. Drugstore chain CVS, perceived as defensive, gained 5.8% for the week.

COMPANY PERFORMANCE

RANK	COMPANY	% CHANGE		RANK	COMPANY	% CHANGE	
		WEEK	SINCE 3/1/06			WEEK	SINCE 3/1/06
1	Apple Computer	-7.1	-22.7	26	D. R. Horton	-2.9	-33.1
2	WellPoint	3.4	-2.3	27	National Oilwell Varco	-1.0	1.7
3	Caremark Rx	2.5	3.2	28	JPMorgan Chase	-0.4	2.7
4	UnitedHealth Group	6.5	-17.5	29	Merrill Lynch	-1.8	-9.8
5	Schlumberger	3.3	16.6	30	Valero Energy	-1.8	21.3
6	Occidental Petroleum	-1.6	12.7	31	ConocoPhillips	0.6	11.5
7	Halliburton	-0.4	10.1	32	Marathon Oil	1.9	22.6
8	Qualcomm	-1.6	-20.4	33	Prudential Financial	0.3	1.6
9	Amgen	1.1	-12.3	34	Microsoft	-3.0	-15.7
10	Aetna	0.8	-23.1	35	Freeport-McMoRan	-1.0	10.9
11	Lowe's	-9.8	-19.5	36	Weatherford International	0.6	19.0
12	Burlington Northern Santa Fe	-5.3	-5.3	37	eBay	-4.0	-32.1
13	Motorola	-4.7	-11.2	38	Coventry Health Care	0.5	-6.4
14	Yahoo	2.8	4.1	39	CVS	5.8	13.0
15	Goldman Sachs Group	-3.8	2.8	40	FedEx	-3.9	5.0
16	Lehman Brothers Holdings	-3.4	-13.3	41	Franklin Resources	0.2	-17.6
17	Gilead Sciences	4.7	-0.8	42	Lennar	-5.9	-30.5
18	Jabil Circuit	-2.8	-34.6	43	Coach	-4.1	-22.7
19	Best Buy	-10.8	-11.4	44	Staples	-2.1	-4.3
20	EMC	-7.7	-28.0	45	NVIDIA	-11.6	-22.6
21	Baker Hughes	0.1	22.0	46	Norfolk Southern	-6.3	-1.6
22	Texas Instruments	-2.4	-2.1	47	Caterpillar	-2.5	-2.4
23	Cisco Systems	-6.8	-9.8	48	McKesson	1.3	-13.0
24	Starbucks	-8.3	-5.2	49	Hartford Financial Services	-2.3	-0.3
25	Intel	-4.6	-13.2	50	Home Depot	-5.4	-20.3

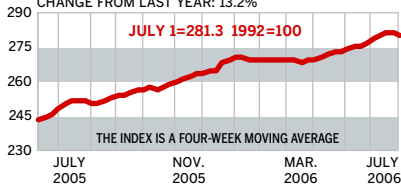
Data: Reuters

BW PRODUCTION INDEX

ONLINE RESOURCES

INDUSTRIAL OUTPUT

CHANGE FROM LAST WEEK: -0.2%
CHANGE FROM LAST YEAR: 13.2%



The production index declined for the first time in nearly four months. Before calculation of the four-week moving average, the index bumped up to 282.3, from 280.7. On a seasonally adjusted basis, the electric-power production and crude-oil refining components posted declines. Auto and truck assemblies rallied, followed closely by a jump in lumber output. Rail-freight traffic, coal, and steel were also higher. During the month of June, the index average rose to 281.3, from 279.2 in May.

Information on each of the index components is at www.businessweek.com.
BW production index Copyright 2006 by The McGraw-Hill Companies

BW50 More information about BW50 companies is available online.

BUSINESSWEEK INVESTING Real-time market coverage and investment tools in partnership with Standard & Poor's.

MUTUAL FUNDS Search for funds, view BW ratings, and read Q&As with fund managers.

COLUMNS Hot stocks, takeover plays, and the latest strategies for managing your money.

BusinessWeek online

For the BW50, more investment data, and the components of the production index visit www.businessweek.com/extras