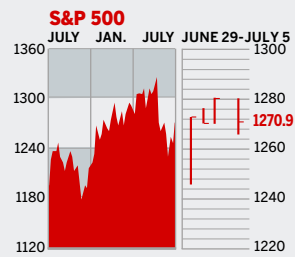


Figures of the Week

STOCKS



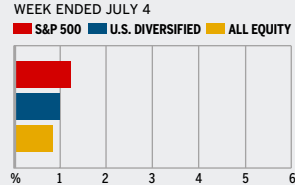
COMMENTARY

The stock market rose 2% for the week, but had some second thoughts. All of the gains came June 29 when the Dow shot up 217 points as traders decided the Fed is wrapping up its campaign of interest rate hikes without having crushed the economy. Then the mirth faded on worries over Korean missiles, earnings, and maybe more rate hikes.

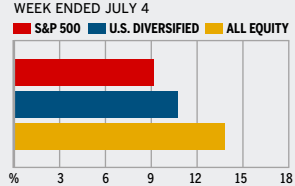
Data: Bloomberg Financial Markets, Reuters

MUTUAL FUNDS

4-WEEK TOTAL RETURN



52-WEEK TOTAL RETURN



Data: Standard & Poor's

U.S. MARKETS

	JULY 5	WEEK	% CHANGE YEAR TO DATE	LAST 12 MONTHS
S&P 500	1270.9	2.0	1.8	5.5
Dow Jones Industrials	11,151.8	1.6	4.1	7.5
NASDAQ Composite	2153.3	2.0	-2.4	3.6
S&P MidCap 400	758.5	2.6	2.8	8.9
S&P SmallCap 600	374.1	3.7	6.7	10.0
DJ Wilshire 5000	12,799.0	2.2	2.4	6.6

SECTORS

	JULY 5	WEEK	% CHANGE YEAR TO DATE	LAST 12 MONTHS
BusinessWeek 50*	723.1	2.2	-2.5	0.8
BW Info Tech 100**	375.5	3.1	-1.3	5.9
S&P/Citigroup Growth	586.4	1.7	-1.7	2.1
S&P/Citigroup Value	683.0	2.3	5.5	9.0
S&P Energy	427.4	4.2	14.7	18.6
S&P Financials	435.6	2.1	2.2	9.0
S&P REIT	171.5	4.2	12.1	12.4
S&P Transportation	283.1	2.8	13.3	36.3
S&P Utilities	164.6	2.0	3.1	1.6
GSTI Internet	172.4	1.8	-16.0	5.8
PSE Technology	779.9	1.7	-6.8	3.5

*Mar. 19, 1999=1000 **Feb. 7, 2000=1000

GLOBAL MARKETS

	JULY 5	WEEK	% CHANGE YEAR TO DATE	LAST 12 MONTHS
S&P Euro Plus (U.S. Dollar)	1660.5	4.6	9.8	24.4
London (FT-SE 100)	5826.7	2.6	3.7	12.3
Paris (CAC 40)	4921.3	3.1	4.4	15.7
Frankfurt (DAX)	5625.6	3.1	4.0	22.2
Tokyo (NIKKEI 225)	15,523.9	4.3	-3.6	33.6
Hong Kong (Hang Seng)	16,267.2	3.3	9.3	15.2
Toronto (S&P/TSX Composite)	11,626.4	2.6	3.1	15.4
Mexico City (IPC)	19,514.6	7.8	9.6	43.0

FUNDAMENTALS

	JULY 4	WEEK AGO	YEAR AGO
S&P 500 Dividend Yield	1.84%	1.91%	2.03%
S&P 500 P/E Ratio (Trailing 12 mos.)	17.2	16.6	19.0
S&P 500 P/E Ratio (Next 12 mos.)*	14.0	13.9	15.3
First Call Earnings Surprise*	8.90%	5.36%	1.43%

*First Call Corp.

TECHNICAL INDICATORS

	JULY 4	WEEK AGO	READING
S&P 500 200-day average	1262.6	1261.8	Positive
Stocks above 200-day average	59.0%	43.0%	Negative
Options: Put/call ratio	0.80	0.80	Positive
Insiders: Vickers NYSE Sell/buy ratio	2.73	3.06	Negative

BEST-PERFORMING GROUPS

	LAST MONTH %	LAST 12 MONTHS %
Motorcycles	7.8	Steel 134.0
Internet Retailers	6.8	Agricultural Products 96.5
Diversified REITs	5.8	Divsfd. Metals & Mining 73.5
Airlines	5.0	Constr. & Engineering 63.8
Drug Chains	4.9	Oil & Gas Equipment 60.9

WORST-PERFORMING GROUPS

	LAST MONTH %	LAST 12 MONTHS %
Electric Mfg. Svcs.	-14.4	Educational Services -34.9
Instrumentation	-11.4	Homebuilding -33.3
Tires & Rubber	-11.1	Tires & Rubber -32.1
Home Furnishings Rtlrs.	-9.4	Automobiles -25.4
Communication Equip.	-9.2	Home Entertainment -23.8

EQUITY FUND CATEGORIES

4-WEEK TOTAL RETURN	%	52-WEEK TOTAL RETURN	%
LEADERS		LEADERS	
Latin America	6.8	Precious Metals	74.1
Natural Resources	3.2	Latin America	58.4
Real Estate	2.8	Diversified Emrg. Mkts.	37.8
Precious Metals	2.3	Natural Resources	37.1
LAGGARDS		LAGGARDS	
Technology	-0.4	Health	5.5
Japan	-0.3	Domestic Hybrid	6.6
Europe	-0.1	Large-cap Growth	7.5
Diversified Pacific/Asia	0.1	Large-cap Blend	9.0

EQUITY FUNDS

4-WEEK TOTAL RETURN	%	52-WEEK TOTAL RETURN	%
LEADERS		LEADERS	
DireXion L. Am. Bl. 2X Inv.	10.6	Midas	113.2
ProFunds Prec. Mtls. Inv.	8.9	U.S. Global Invs. Gold	109.3
PowerShares Emrg. Explor.	8.3	U.S. Gbl. Invs. Prc. Mnl.	101.0
iShares D.J. U.S. Oil Explor. Idx.	8.3	ING Russia A	92.1
LAGGARDS		LAGGARDS	
Ameritor Investment	-25.0	Ameritor Investment	-75.0
PowerShares Emrg. Explor.	-12.6	American Heritage Growth	-33.3
DireXion Emrg. Mkts. Sht.	-12.0	DireXn. Sm. Cap Br. 2.5X Inv.	-24.9
Frontier MicroCap	-9.5	ProFds. USh. Sm. Cap Inv.	-23.1

INTEREST RATES

KEY RATES

	JULY 5	WEEK AGO	YEAR AGO
Money Market Funds	4.71%	4.62%	2.74%
90-Day Treasury Bills	5.01	4.99	3.16
2-Year Treasury Notes	5.24	5.28	3.79
10-Year Treasury Notes	5.22	5.25	4.11
30-Year Treasury Bonds	5.27	5.28	4.36
30-Year Fixed Mortgage †	6.72	6.76	5.47

†BanxQuote, Inc.

BLOOMBERG MUNI YIELD EQUIVALENTS

Taxable equivalent yields on AAA-rated, tax-exempt municipal bonds, assuming a 30% federal tax rate.

	10-YR. BOND	30-YR. BOND
General Obligations	4.21%	4.58%
Taxable Equivalent	6.01	6.54
Insured Revenue Bonds	4.27	4.64
Taxable Equivalent	6.10	6.63

THE WEEK AHEAD

INSTALLMENT CREDIT Monday, July 10, 3 p.m. EDT » In May consumers most likely assumed \$2.5 billion more of debt, after taking on \$10.6 billion in April. That's the median forecast of economists polled by Action Economics.

INTERNATIONAL TRADE

Wednesday, July 12, 8:30 a.m. EDT » The foreign trade deficit probably widened to \$64.6 billion in May from \$63.4 billion in

April. The May rise in imports is expected to have outpaced the gain in exports.

FEDERAL BUDGET Thursday, July 13, 2 p.m. EDT » The federal government is forecast to have posted a \$23.3 billion surplus in June. The May deficit was \$42.8 billion.

RETAIL SALES Friday, July 14, 8:30 a.m. EDT » Retail sales probably grew 0.5% in June, after edging up 0.1% in May. Minus

autos, June sales likely rose 0.4%, following a 0.5% jump in May.

EXPORT-IMPORT PRICES Friday, July 14, 8:30 a.m. EDT » June export prices are expected to have increased 0.4%, after a 0.7% jump in May. Import prices most likely rose 0.5%, following a 1.6% surge in the prior month.

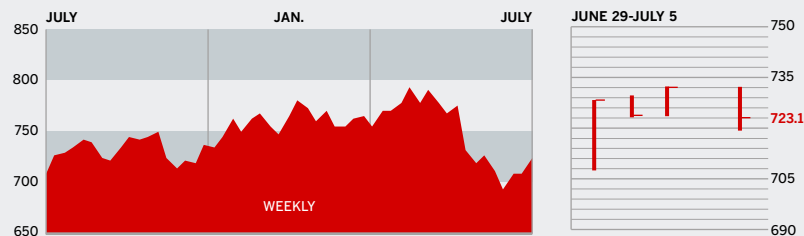
BUSINESS INVENTORIES Friday, July 14, 10 a.m. EDT » May inventories probably climbed 0.3%, after a 0.4% rise.

The *BusinessWeek* production index was virtually unchanged at 282 for the week ended June 24, a 14.6% gain from the previous year. Before calculation of the four-week moving average, the index eased to 280.7.

BusinessWeek online

For the BW50, more investment data, and the components of the production index visit www.businessweek.com/extras

THE BUSINESSWEEK FIFTY



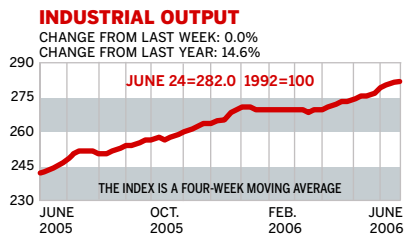
As oil prices climbed to record highs, again, oilfield services stocks carried the BW50 up 2.2% for the week. Weatherford International, Schlumberger, Halliburton, and Baker Hughes all rose at least 6.5%. The up-and-down shares of gold producer Freeport-McMoRan were up big this week: 13.1%. But it was tough in tech. Qualcomm dropped 3.3%. EMC lost 2.8%, and eBay dipped 1.4%.

COMPANY PERFORMANCE

RANK	COMPANY	WEEK	% CHANGE SINCE 3/1/06	RANK	COMPANY	WEEK	% CHANGE SINCE 3/1/06
1	Apple Computer	1.8	-16.8	26	D. R. Horton	0.0	-31.1
2	WellPoint	1.1	-5.5	27	National Oilwell Varco	3.2	2.7
3	Caremark Rx	4.6	0.7	28	JPMorgan Chase	2.8	3.1
4	UnitedHealth Group	1.5	-22.5	29	Merrill Lynch	4.9	-8.2
5	Schlumberger	6.9	12.8	30	Valero Energy	4.8	23.6
6	Occidental Petroleum	3.2	14.5	31	ConocoPhillips	5.3	10.8
7	Halliburton	6.5	10.6	32	Marathon Oil	3.8	20.3
8	Qualcomm	-3.3	-19.1	33	Prudential Financial	2.3	1.2
9	Amgen	2.4	-13.2	34	Microsoft	0.8	-13.1
10	Aetna	-1.2	-23.7	35	Freeport-McMoRan	13.1	12.0
11	Lowe's	0.5	-10.8	36	Weatherford International	7.4	18.3
12	Burlington Northern Santa Fe	1.8	0.1	37	eBay	-1.4	-29.2
13	Motorola	3.3	-6.8	38	Coventry Health Care	3.4	-6.9
14	Yahoo	1.7	1.3	39	CVS	2.2	6.8
15	Goldman Sachs Group	3.0	6.8	40	FedEx	3.7	9.3
16	Lehman Brothers Holdings	5.9	-10.3	41	Franklin Resources	0.8	-17.8
17	Gilead Sciences	5.2	-5.3	42	Lennar	1.5	-26.2
18	Jabil Circuit	5.0	-32.8	43	Coach	0.5	-19.4
19	Best Buy	1.6	-0.7	44	Staples	-0.8	-2.3
20	EMC	-2.8	-22.0	45	NVIDIA	0.3	-12.5
21	Baker Hughes	6.5	21.8	46	Norfolk Southern	5.4	5.0
22	Texas Instruments	3.3	0.2	47	Caterpillar	0.6	0.1
23	Cisco Systems	1.1	-3.2	48	McKesson	-0.3	-14.1
24	Starbucks	5.1	3.4	49	Hartford Financial Services	2.2	2.0
25	Intel	0.5	-9.0	50	Home Depot	-1.7	-15.7

Data: Reuters

BW PRODUCTION INDEX



The production index improved, but just barely. Before calculation of the four-week moving average, the index slipped to 280.7, from 281. On a seasonally adjusted basis, only two components didn't decline, with electric-power production posting a modest gain and autos virtually unchanged. On the downside, truck assemblies suffered the largest decrease. Steel, coal, and rail freight traffic were down moderately, followed by small drops in lumber and crude-oil refining.

Information on each of the index components is at www.businessweek.com.
BW production index Copyright 2006 by The McGraw-Hill Companies

ONLINE RESOURCES

BW50 More information about BW50 companies is available online.

BUSINESSWEEK INVESTING Real-time market coverage and investment tools in partnership with Standard & Poor's.

MUTUAL FUNDS Search for funds, view BW ratings, and read Q&As with fund managers.

COLUMNS Hot stocks, takeover plays, and the latest strategies for managing your money.

BusinessWeek online

For the BW50, more investment data, and the components of the production index visit www.businessweek.com/extras