

Personal Finance Figures of the Week

STOCKS



COMMENTARY

A weak jobs report on May 5, signalling the economy may be cooling, sent stocks higher on hopes that the Fed's rate hikes might soon end. No such luck: The central bank on May 10 added a quarter point to the fed funds rate, and hinted that more may follow. For the week, the Dow jumped 2.1% to a level just shy of its all-time record, thanks to high-flying Boeing.

Data: Bloomberg Financial Markets, Reuters

U.S. MARKETS

	MAY 10	WEEK	% CHANGE YEAR TO DATE	LAST 12 MONTHS
S&P 500	1322.9	1.1	6.0	13.4
Dow Jones Industrials	11,642.7	2.1	8.6	13.2
NASDAQ Composite	2320.7	0.7	5.2	18.2
S&P MidCap 400	814.5	1.3	10.4	26.1
S&P SmallCap 600	403.2	1.6	15.0	29.7
DJ Wilshire 5000	13,394.9	1.2	7.2	16.5

SECTORS

	MAY 10	WEEK	% CHANGE YEAR TO DATE	LAST 12 MONTHS
BusinessWeek 50*	775.4	1.1	4.5	13.2
BW Info Tech 100**	401.1	0.5	5.4	17.8
S&P/Citigroup Growth	610.5	0.8	2.3	8.4
S&P/Citigroup Value	710.8	1.5	9.8	18.7
S&P Energy	439.6	1.2	17.9	36.2
S&P Financials	457.0	1.4	7.2	19.0
S&P REIT	169.2	3.1	10.6	19.3
S&P Transportation	290.1	2.4	16.1	36.0
S&P Utilities	161.2	1.4	1.0	6.6
GSTI Internet	191.8	1.9	-6.5	23.3
PSE Technology	864.9	-0.7	3.4	20.9

*Mar. 19, 1999=1000 **Feb. 7, 2000=1000

GLOBAL MARKETS

	MAY 10	WEEK	% CHANGE YEAR TO DATE	LAST 12 MONTHS
S&P Euro Plus (U.S. Dollar)	1797.2	2.8	18.9	33.5
London (FT-SE 100)	6083.4	1.2	8.3	24.3
Paris (CAC 40)	5278.3	1.6	11.9	31.9
Frankfurt (DAX)	6118.4	2.5	13.1	43.9
Tokyo (NIKKEI 225)	16,951.9	-1.2	5.2	51.9
Hong Kong (Hang Seng)	17,080.6	0.3	14.8	21.8
Toronto (S&P/TSX Composite)	12,316.3	1.0	9.3	29.7
Mexico City (IPC)	21,781.1	2.9	22.3	74.3

FUNDAMENTALS

	MAY 9	WEEK AGO	YEAR AGO
S&P 500 Dividend Yield	1.75%	1.76%	2.06%
S&P 500 P/E Ratio (Trailing 12 mos.)	17.9	17.8	19.1
S&P 500 P/E Ratio (Next 12 mos.)*	15.0	14.9	15.3
First Call Earnings Revision*	0.03%	0.30%	-0.35%

*First Call Corp.

TECHNICAL INDICATORS

	MAY 9	WEEK AGO	READING
S&P 500 200-day average	1255.7	1253.4	Positive
Stocks above 200-day average	71.0%	68.0%	Negative
Options: Put/call ratio	0.74	0.78	Positive
Insiders: Vickers NYSE Sell/buy ratio	4.92	5.00	Negative

BEST-PERFORMING GROUPS

	LAST MONTH %	LAST 12 MONTHS %
Agricultural Products	24.3	136.2
Divsfd. Metals & Mining	15.7	133.4
Steel	15.4	125.1
Employment Services	14.6	100.7
Constr. & Engineering	13.6	99.3

WORST-PERFORMING GROUPS

	LAST MONTH %	LAST 12 MONTHS %
Consumer Electronics	-22.5	-22.8
Health-Care Supplies	-13.3	-21.8
Home Entmnt. Software	-12.6	-18.8
Specialized Finance	-11.6	-16.2
Homebuilding	-11.5	-12.6

EQUITY FUND CATEGORIES

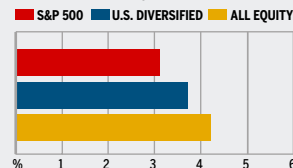
4-WEEK TOTAL RETURN		% 52-WEEK TOTAL RETURN	
LEADERS		LEADERS	
Precious Metals	16.4	Precious Metals	114.3
Latin America	15.0	Latin America	101.7
Diversified Emerg. Mkts.	9.4	Diversified Emerg. Mkts.	66.4
Europe	8.8	Natural Resources	60.3
LAGGARDS		LAGGARDS	
Health	0.4	Health	9.7
Large-cap Growth	2.2	Domestic Hybrid	12.2
Technology	2.2	Large-cap Blend	16.9
Domestic Hybrid	2.3	Utilities	17.0

EQUITY FUNDS

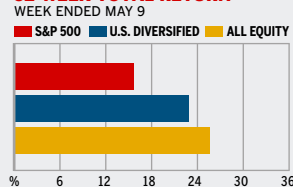
4-WEEK TOTAL RETURN		% 52-WEEK TOTAL RETURN	
LEADERS		LEADERS	
ProFunds Precs. Mtls. Inv.	29.5	Midas	167.2
Midas	28.3	ProFunds Precs. Mtls. Inv.	157.8
OCM Gold	21.2	U.S. Global Invsr. Gold	157.6
U.S. Global Invsr. Gold	21.0	U.S. Gbl. Invsr. Prc. Mnls.	142.7
LAGGARDS		LAGGARDS	
ProFds. Sh. Prec. Mtls. Inv.	-17.2	ProFds. USh. Sm. Cap Inv.	-41.8
Rydex Strengthening Dlr. H	-9.3	ProFds. USh. Mid Cap Inv.	-35.6
ProFds. USh. Sm. Cap Inv.	-9.2	Rydex Dyn. Vent. 100 H	-25.1
ProFunds USh. Dow 30 Inv.	-8.9	ProFunds ULSh. OTC Inv.	-24.8

MUTUAL FUNDS

4-WEEK TOTAL RETURN



52-WEEK TOTAL RETURN



Data: Standard & Poor's

INTEREST RATES

KEY RATES

	MAY 10	WEEK AGO	YEAR AGO
Money Market Funds	4.39%	4.35%	2.48%
90-Day Treasury Bills	4.87	4.82	2.90
2-Year Treasury Notes	4.99	4.94	3.67
10-Year Treasury Notes	5.13	5.14	4.20
30-Year Treasury Bonds	5.19	5.24	4.57
30-Year Fixed Mortgage †	6.49	6.48	5.70

†BancQuote, Inc.

BLOOMBERG MUNI YIELD EQUIVALENTS

Taxable equivalent yields on AAA-rated, tax-exempt municipal bonds, assuming a 30% federal tax rate.

	10-YR. BOND	30-YR. BOND
General Obligations	4.15%	4.50%
Taxable Equivalent	5.93	6.43
Insured Revenue Bonds	4.23	4.61
Taxable Equivalent	6.04	6.59

THE WEEK AHEAD

RESIDENTIAL CONSTRUCTION

Tuesday, May 16, 8:30 a.m. EDT » April housing starts are expected to have narrowly risen to an annual rate of 1.97 million. That's the median forecast of economists polled by Action Economics. In March, starts slipped to a pace of 1.96 million.

PRODUCER PRICE INDEX

Tuesday, May 16, 8:30 a.m. EDT » Producer prices most likely jumped 0.6% in April, after

climbing 0.5% in March. Excluding food and energy, wholesale prices probably rose by a tamer 0.2%, after ticking up 0.1% in March.

INDUSTRIAL PRODUCTION

Tuesday, May 16, 9:15 a.m. EDT » Factory output probably grew 0.4% in April, after expanding 0.6% in March. Greater activity likely pushed the factory utilization rate up to 81.5%, from 81.3%.

CONSUMER PRICE INDEX

Wednesday, May 17, 8:30

a.m. EDT » Consumer prices for goods and services are forecast to have risen 0.5% in April, fueled by a surge in gas prices. The index grew 0.4% in March. Excluding food and energy, prices probably rose 0.2%, after a 0.3% increase.

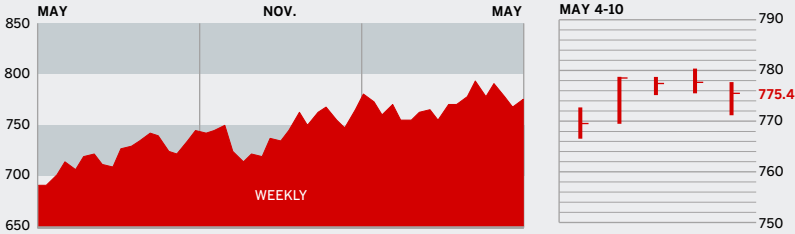
LEADING INDICATORS Thursday, May 18, 10 a.m. EDT » The Conference Board's index of leading economic indicators most likely rebounded by 0.1% in April, following a 0.1% dip in March.

The *BusinessWeek* production index rose to 273.9 for the week ended Apr. 29, a 13.6% increase from the previous year. Before calculation of the four-week moving average, the index inched up to 274.8.

BusinessWeek online

For the BW50, more investment data, and the components of the production index visit www.businessweek.com/magazine/extra.htm

THE BUSINESSWEEK FIFTY



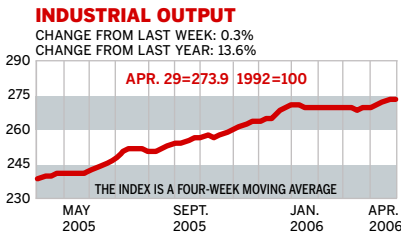
The BW50 added 1.1% for the week. Aetna, whose shares had been under pressure, rose 5.7% on news that it will offer dental benefits to federal employees, while insurer WellPoint climbed 5.1% on analyst upgrades. Goldman and Lehman rose strongly early in the week, and then fell after the Fed signaled it might not be done with its rate increases. Nvidia fell 5% ahead of its May 11 profit report.

COMPANY PERFORMANCE

RANK	COMPANY	% CHANGE WEEK	% CHANGE SINCE 3/1/06	RANK	COMPANY	% CHANGE WEEK	% CHANGE SINCE 3/1/06
1	Apple Computer	-0.8	3.1	26	D. R. Horton	1.8	-12.8
2	WellPoint	5.1	-7.5	27	National Oilwell Varco	0.3	16.7
3	Caremark Rx	0.8	-5.2	28	JPMorgan Chase	1.0	11.6
4	UnitedHealth Group	-0.9	-20.7	29	Merrill Lynch	2.3	-0.9
5	Schlumberger	0.6	27.1	30	Valero Energy	-0.3	21.3
6	Occidental Petroleum	1.6	17.0	31	ConocoPhillips	0.3	11.1
7	Halliburton	4.0	20.9	32	Marathon Oil	1.3	16.1
8	Qualcomm	-0.2	9.5	33	Prudential Financial	0.2	2.2
9	Amgen	1.7	-10.5	34	Microsoft	2.6	-11.5
10	Aetna	5.7	-22.8	35	Freeport-McMoRan	10.6	37.9
11	Lowe's	3.4	-5.5	36	Weatherford International	3.5	34.1
12	Burlington Northern Santa Fe	4.3	6.5	37	eBay	-4.6	-18.6
13	Motorola	1.8	4.2	38	Coventry Health Care	5.6	-15.3
14	Yahoo	-0.2	0.1	39	CVS	1.4	7.4
15	Goldman Sachs Group	3.1	16.1	40	FedEx	3.4	10.1
16	Lehman Brothers Holdings	3.5	1.7	41	Franklin Resources	5.8	-8.6
17	Gilead Sciences	1.2	-8.8	42	Lennar	-0.5	-11.5
18	Jabil Circuit	-6.3	1.0	43	Coach	-4.7	-11.4
19	Best Buy	-0.6	3.5	44	Staples	0.7	8.6
20	EMC	-1.3	-5.9	45	NVIDIA	-5.0	25.3
21	Baker Hughes	1.2	28.0	46	Norfolk Southern	2.6	12.1
22	Texas Instruments	-3.2	12.9	47	Caterpillar	3.7	10.8
23	Cisco Systems	-3.4	2.5	48	McKesson	2.0	-10.7
24	Starbucks	2.3	5.2	49	Hartford Financial Services	1.9	11.9
25	Intel	2.2	-5.0	50	Home Depot	2.1	-2.2

Data: Reuters

BW PRODUCTION INDEX



The production index improved for the sixth straight week. Before calculation of the four-week moving average the index edged up to 274.8, from 274.6. After seasonal adjustments, only three components managed a gain. Lumber output grew the most, followed by steel and electric power production. Auto and truck assemblies led those that declined. Crude-oil refining, coal, and rail freight traffic were off modestly. During April the index average rebounded to 273.5, from 270.1 in March.

Information on each of the index components is at www.businessweek.com.
BW production index Copyright 2006 by The McGraw-Hill Companies

ONLINE RESOURCES

BW50 More information about BW50 companies is available online.

BUSINESSWEEK INVESTING Real-time market coverage and investment tools in partnership with Standard & Poor's.

MUTUAL FUNDS Search for funds, view BW ratings, and read Q&As with fund managers.

COLUMNS Hot stocks, takeover plays, and the latest strategies for managing your money.

BusinessWeek online

For the BW50, more investment data, and the components of the production index visit www.businessweek.com/magazine/extra.htm