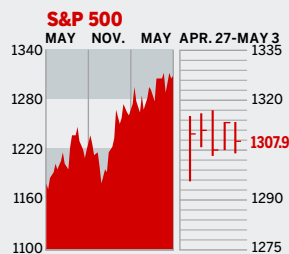


Personal Finance Figures of the Week

STOCKS



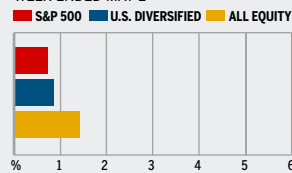
COMMENTARY

The Dow and S&P 500 hit new highs on May 2 on good earnings from Archer Daniels Midland. But the next day both gauges dipped on stronger-than-expected growth in the service sector. The surprising economic numbers pointed to more Fed interest rate hikes, sending tremors through the bond market, which had been betting the hikes were coming to an end.

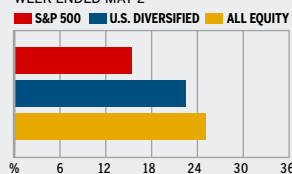
Data: Bloomberg Financial Markets, Reuters

MUTUAL FUNDS

4-WEEK TOTAL RETURN



52-WEEK TOTAL RETURN



Data: Standard & Poor's

U.S. MARKETS

	MAY 3	WEEK	% CHANGE YEAR TO DATE	% CHANGE LAST 12 MONTHS
S&P 500	1307.9	0.2	4.8	12.6
Dow Jones Industrials	11,400.3	0.4	6.4	11.1
NASDAQ Composite	2304.0	-1.3	4.5	19.2
S&P MidCap 400	804.0	0.6	8.9	26.5
S&P SmallCap 600	396.7	0.4	13.1	29.6
DJ Wilshire 5000	13,234.3	0.2	5.9	15.9

SECTORS

	MAY 2	WEEK AGO	YEAR AGO
BusinessWeek 50*	766.7	-1.3	3.3
BW Info Tech 100**	399.1	-1.6	4.9
S&P/Citigroup Growth	605.8	-0.7	1.6
S&P/Citigroup Value	700.2	1.0	8.1
S&P Energy	434.4	2.2	16.6
S&P Financials	450.7	1.4	5.7
S&P REIT	164.0	-1.2	7.2
S&P Transportation	283.3	0.5	13.4
S&P Utilities	159.0	1.8	-0.4
GSTI Internet	188.3	-2.3	-8.2
PSE Technology	870.9	-0.1	4.1

*Mar. 19, 1999=1000 **Feb. 7, 2000=1000

GLOBAL MARKETS

	MAY 3	WEEK	% CHANGE YEAR TO DATE	% CHANGE LAST 12 MONTHS
S&P Euro Plus (U.S. Dollar)	1748.8	0.1	15.7	30.4
London (FT-SE 100)	6010.0	-1.5	7.0	23.6
Paris (CAC 40)	5193.9	-1.1	10.2	31.3
Frankfurt (DAX)	5969.0	-2.3	10.4	40.6
Tokyo (NIKKEI 225)	17,153.8	0.6	6.5	55.9
Hong Kong (Hang Seng)	17,027.0	2.1	14.5	22.5
Toronto (S&P/TSX Composite)	12,196.2	-1.0	8.2	30.1
Mexico City (IPC)	21,159.2	2.9	18.9	71.2

FUNDAMENTALS

	MAY 2	WEEK AGO	YEAR AGO
S&P 500 Dividend Yield	1.76%	1.78%	2.06%
S&P 500 P/E Ratio (Trailing 12 mos.)	17.8	18.1	19.2
S&P 500 P/E Ratio (Next 12 mos.)*	14.9	14.8	15.2
First Call Earnings Surprise*	5.02%	6.49%	4.70%

*First Call Corp.

TECHNICAL INDICATORS

	MAY 2	WEEK AGO	READING
S&P 500 200-day average	1253.4	1251.3	Positive
Stocks above 200-day average	68.0%	67.0%	Neutral
Options: Put/call ratio	0.78	0.73	Positive
Insiders: Vickers NYSE Sell/buy ratio	5.00	5.33	Negative

BEST-PERFORMING GROUPS

	LAST MONTH %	LAST 12 MONTHS %
Agricultural Products	23.0	127.4
Oil & Gas Equipment	15.2	121.6
Steel	12.4	103.9
Power and Energy Traders	11.6	100.3
Home Furnishings	11.0	94.0

WORST-PERFORMING GROUPS

	LAST MONTH %	LAST 12 MONTHS %
Consumer Electronics	-19.4	-27.0
Health-Care Supplies	-18.1	-24.0
Managed Health Care	-17.3	-17.5
Specialized Finance	-12.5	-17.2
Systems Software	-11.1	-12.0

EQUITY FUND CATEGORIES

4-WEEK TOTAL RETURN	%	52-WEEK TOTAL RETURN	%
LEADERS			
Precious Metals	11.5	Precious Metals	106.5
Natural Resources	8.0	Latin America	97.5
Latin America	7.9	Diversified Emerg. Mkts.	65.2
Diversified Emerg. Mkts.	6.3	Natural Resources	62.1
LAGGARDS			
Health	-4.0	Health	11.0
Real Estate	-2.3	Domestic Hybrid	11.8
Technology	-0.3	Large-cap Blend	16.5
Large-cap Growth	-0.3	Utilities	16.5

EQUITY FUNDS

4-WEEK TOTAL RETURN	%	52-WEEK TOTAL RETURN	%
LEADERS			
ProFunds Precs. Mtls. Inv.	18.2	U.S. Global Invr. Gold	154.0
Midas	17.4	Midas	149.7
U.S. Global Invr. Gold	16.2	U.S. Gbl. Invr. Prc. Mnl. Inv.	139.8
OCM Gold	15.6	ProFunds Precs. Mtls. Inv.	137.9
LAGGARDS			
Ameritor Investment	-20.0	Ameritor Investment	-69.2
ProFunds Biotech. Inv.	-12.8	ProFds. USh. Sm. Cap Inv.	-42.0
ProFds. Sh. Prc. Mtls. Inv.	-11.9	ProFds. USh. Mid Cap Inv.	-36.1
Allianz RCM Biotech. D	-9.3	Rydex Dyn. Vent. 100 H	-25.7

INTEREST RATES

KEY RATES

	MAY 3	WEEK AGO	YEAR AGO
Money Market Funds	4.35%	4.30%	2.43%
90-Day Treasury Bills	4.82	4.78	2.91
2-Year Treasury Notes	4.94	4.99	3.64
10-Year Treasury Notes	5.14	5.11	4.17
30-Year Treasury Bonds	5.24	5.18	4.48
30-Year Fixed Mortgage †	6.48	6.48	5.72

†BanxQuote, Inc.

BLOOMBERG MUNI YIELD EQUIVALENTS

Taxable equivalent yields on AAA-rated, tax-exempt municipal bonds, assuming a 30% federal tax rate.

	10-YR. BOND	30-YR. BOND
General Obligations	4.16%	4.52%
Taxable Equivalent	5.94	6.46
Insured Revenue Bonds	4.26	4.63
Taxable Equivalent	6.09	6.61

THE WEEK AHEAD

FOMC MEETING *Wednesday, May 10, 9 a.m. EDT* » The Federal Reserve's Open Market Committee meets to discuss monetary policy. Every economist surveyed by Action Economics believes the central bank will lift its Fed funds rate from 4.75% to 5%.
FEDERAL BUDGET *Wednesday, May 10, 2 p.m. EDT* » The federal government probably ran a \$68 billion surplus in April. That's the median forecast of economists

polled by Action Economics. The March deficit was \$85.5 billion.
RETAIL SALES *Thursday, May 11, 8:30 a.m. EDT* » Retail sales most likely posted a second consecutive gain of 0.6% in April. Minus autos, sales probably grew by 0.6% as well, after a 0.4% gain in March.
BUSINESS INVENTORIES *Thursday, May 11, 10 a.m. EDT* » March inventories most likely rose by 0.3%.

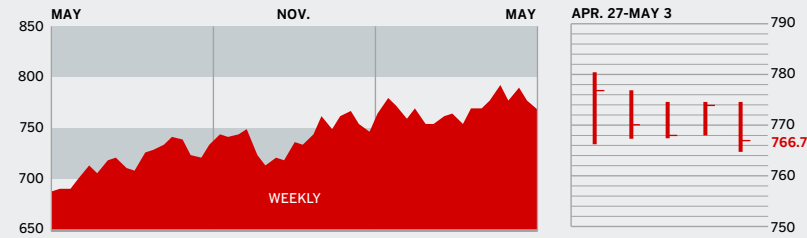
INTERNATIONAL TRADE *Friday, May 12, 8:30 a.m. EDT* » The March foreign trade deficit probably widened to \$67 billion, after narrowing to \$65.7 billion in February.
EXPORT-IMPORT PRICES *Friday, May 12, 8:30 a.m. EDT* » April export prices are forecast to have edged up 0.1%, after a 0.2% rise in March. Import prices most likely jumped 0.8%, following a 0.4% dip in the previous month.

The *BusinessWeek* production index improved to 273.2 for the week ended Apr. 22, a 13.6% jump from a year ago. Before calculation of the four-week moving average, the index rose to 274.6.

BusinessWeek online

For the BW50, more investment data, and the components of the production index visit www.businessweek.com/magazine/extra.htm

THE BUSINESSWEEK FIFTY



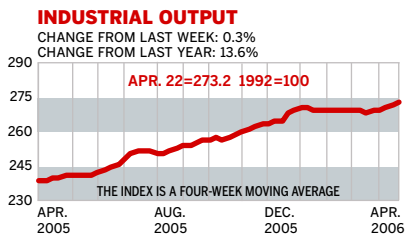
The BW50 lost 1.3% this week, on par with the NASDAQ. Aetna disappointed investors with a less-than-stellar profit report and a lackluster forecast. Worries that Microsoft is gearing up for an all-out war with Google for dominance in the search business sent its shares sharply lower, despite strong quarterly profits and sales. Baker Hughes and Nvidia rose on buyout hopes.

COMPANY PERFORMANCE

RANK	COMPANY	% CHANGE WEEK	% CHANGE SINCE 3/1/06	RANK	COMPANY	% CHANGE WEEK	% CHANGE SINCE 3/1/06
1	Apple Computer	4.4	3.9	26	D. R. Horton	-6.7	-14.3
2	WellPoint	-4.1	-12.0	27	National Oilwell Varco	3.1	16.4
3	Caremark Rx	5.3	-6.0	28	JPMorgan Chase	6.6	10.5
4	UnitedHealth Group	-4.8	-20.0	29	Merrill Lynch	-5.3	-3.1
5	Schlumberger	6.0	26.3	30	Valero Energy	3.7	21.6
6	Occidental Petroleum	5.2	15.2	31	ConocoPhillips	0.5	10.7
7	Halliburton	0.9	16.3	32	Marathon Oil	-1.1	14.7
8	Qualcomm	1.3	9.7	33	Prudential Financial	1.4	2.0
9	Amgen	-0.1	-12.0	34	Microsoft	-14.5	-13.8
10	Aetna	-19.8	-27.0	35	Freeport-McMoRan	-3.7	24.7
11	Lowe's	-0.8	-8.6	36	Weatherford International	6.3	29.6
12	Burlington Northern Santa Fe	-2.5	2.1	37	eBay	-0.1	-14.7
13	Motorola	-0.9	2.3	38	Coventry Health Care	-4.2	-19.8
14	Yahoo	-2.5	0.3	39	CVS	2.2	5.9
15	Goldman Sachs Group	-2.6	12.6	40	FedEx	-0.1	6.5
16	Lehman Brothers Holdings	-6.4	-1.7	41	Franklin Resources	-9.2	-13.6
17	Gilead Sciences	-2.1	-9.9	42	Lennar	-5.3	-11.0
18	Jabil Circuit	4.2	7.7	43	Coach	1.5	-7.0
19	Best Buy	-1.7	4.1	44	Staples	2.3	7.8
20	EMC	-2.3	-4.6	45	NVIDIA	8.2	31.8
21	Baker Hughes	8.8	26.5	46	Norfolk Southern	0.9	9.2
22	Texas Instruments	-0.1	16.6	47	Caterpillar	2.8	6.9
23	Cisco Systems	3.7	6.2	48	McKesson	-1.4	-12.4
24	Starbucks	-0.6	2.8	49	Hartford Financial Services	3.9	9.8
25	Intel	-1.7	-7.0	50	Home Depot	0.7	-4.2

Data: Reuters

BW PRODUCTION INDEX



The production index posted another modest increase in the latest period. Before calculation of the four-week moving average, the index rose from 273.3 to 274.6. On a seasonally adjusted basis, the components were divided evenly. Crude-oil refining showed the strongest gain. Electric-power production, steel, and coal output also pushed the index higher. Auto and truck assemblies both ticked down. Lumber and rail-freight traffic were slightly lower as well.

Information on each of the index components is at www.businessweek.com.
BW production index Copyright 2006 by The McGraw-Hill Companies

ONLINE RESOURCES

BW50 More information about BW50 companies is available online.

BUSINESSWEEK INVESTING Real-time market coverage and investment tools in partnership with Standard & Poor's.

MUTUAL FUNDS Search for funds, view BW ratings, and read Q&As with fund managers.

COLUMNS Hot stocks, takeover plays, and the latest strategies for managing your money.

BusinessWeek online

For the BW50, more investment data, and the components of the production index visit www.businessweek.com/magazine/extra.htm