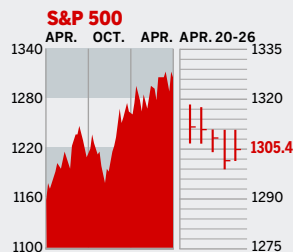


STOCKS



COMMENTARY

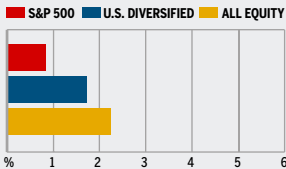
Surging oil prices and strong consumer confidence numbers took some wind out of the stock market this week, as investors worried that the Fed will continue hiking rates. Stocks rose on Apr. 26, however, on the report of a jump in durable goods orders and good earnings from PepsiCo and Boeing. The Dow eked out a gain to end at a 52-week high, while the S&P 500 and NASDAQ fell.

Data: Bloomberg Financial Markets, Reuters

MUTUAL FUNDS

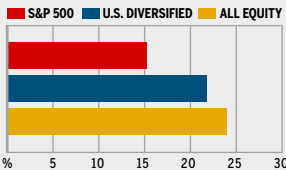
4-WEEK TOTAL RETURN

WEEK ENDED APR. 25



52-WEEK TOTAL RETURN

WEEK ENDED APR. 25



Data: Standard & Poor's

U.S. MARKETS

	APR. 26	WEEK	% CHANGE YEAR TO DATE	LAST 12 MONTHS
S&P 500	1305.4	-0.3	4.6	13.3
Dow Jones Industrials	11,354.5	0.7	5.9	11.9
NASDAQ Composite	2333.6	-1.6	5.8	21.1
S&P MidCap 400	799.3	-1.2	8.3	25.7
S&P SmallCap 600	395.2	-1.6	12.7	28.5
DJ Wilshire 5000	13,205.9	-0.5	5.7	16.4

SECTORS

	APR. 26	WEEK	% CHANGE YEAR TO DATE	LAST 12 MONTHS
BusinessWeek 50*	776.9	-1.7	4.7	13.9
BW Info Tech 100**	405.7	0.1	6.6	20.5
S&P/Citigroup Growth	609.8	-0.5	2.2	9.4
S&P/Citigroup Value	693.1	-0.2	7.0	17.5
S&P Energy	425.0	-2.7	14.0	28.2
S&P Financials	444.7	0.1	4.3	18.5
S&P REIT	166.1	-1.6	8.5	21.4
S&P Transportation	281.7	-1.9	12.8	35.3
S&P Utilities	156.1	-0.3	-2.2	4.0
GSTI Internet	192.6	-3.8	-6.1	24.0
PSE Technology	872.2	-0.6	4.3	24.5

*Mar. 19, 1999=1000 **Feb. 7, 2000=1000

GLOBAL MARKETS

	APR. 26	WEEK	% CHANGE YEAR TO DATE	LAST 12 MONTHS
S&P Euro Plus (U.S. Dollar)	1747.6	2.1	15.6	28.5
London (FT-SE 100)	6104.3	0.2	8.6	26.0
Paris (CAC 40)	5252.3	1.8	11.4	31.5
Frankfurt (DAX)	6107.1	1.9	12.9	44.2
Tokyo (NIKKEI 225)	17,055.9	-1.7	5.9	54.6
Hong Kong (Hang Seng)	16,672.7	-0.9	12.1	20.3
Toronto (S&P/TSX Composite)	12,321.7	-1.3	9.3	30.7
Mexico City (IPC)	20,566.9	3.2	15.5	63.5

FUNDAMENTALS

	APR. 25	WEEK AGO	YEAR AGO
S&P 500 Dividend Yield	1.78%	1.77%	2.08%
S&P 500 P/E Ratio (Trailing 12 mos.)	17.8	18.1	19.3
S&P 500 P/E Ratio (Next 12 mos.)*	14.8	14.9	15.1
First Call Earnings Surprise*	6.49%	7.13%	5.79%

*First Call Corp.

TECHNICAL INDICATORS

	APR. 25	WEEK AGO	READING
S&P 500 200-day average	1251.3	1248.6	Positive
Stocks above 200-day average	67.0%	68.0%	Neutral
Options: Put/call ratio	0.73	0.82	Positive
Insiders: Vickers NYSE Sell/buy ratio	5.33	5.47	Negative

BEST-PERFORMING GROUPS

	LAST MONTH %	LAST 12 MONTHS %
Gold Mining	17.5	107.8
Aluminum	17.2	96.5
Divsfd. Metals & Mining	17.1	94.3
Oil & Gas Equip.	13.4	82.7
Steel	12.6	80.2

WORST-PERFORMING GROUPS

	LAST MONTH %	LAST 12 MONTHS %
Health Care Supplies	-12.5	-19.0
Managed Health Care	-10.6	-14.9
IT Consulting	-9.7	-13.1
Biotechnology	-8.6	-8.0
Airlines	-8.2	-7.7

EQUITY FUND CATEGORIES

4-WEEK TOTAL RETURN	%	52-WEEK TOTAL RETURN	%
LEADERS			
Precious Metals	14.4	Precious Metals	91.2
Latin America	9.9	Latin America	85.2
Natural Resources	8.3	Diversified Emerg. Mkts.	58.6
Diversified Emerg. Mkts.	8.2	Natural Resources	53.2
LAGGARDS			
Health	-3.7	Domestic Hybrid	11.4
Real Estate	-2.5	Health	12.8
Utilities	0.8	Utilities	15.0
Communications	0.8	Large-cap Blend	16.1

EQUITY FUNDS

4-WEEK TOTAL RETURN	%	52-WEEK TOTAL RETURN	%
LEADERS			
ProFunds Precs. Mtls. Inv.	25.0	ProFunds Ultra Japan Inv.	133.7
American Heritage Grth.	25.0	U.S. Global Invr. Gold	129.3
Amer. Cent. Gl. Gold Inv.	19.8	Midas	122.8
GAMCO Gold A	18.9	U.S. Gbl. Invs. Prc. Mnls.	118.9
LAGGARDS			
Ameritor Investment	-20.0	Ameritor Investment	-71.4
ProFds. Sh. Prc. Mtls. Inv.	-15.2	Potomac Sm. Cap/Sh. Inv.	-42.3
Potomac Emerg. Mkts. Short	-14.4	ProFds. USH. Sm. Cap Inv.	-41.2
Potomac Dvlpd. Mkts. Short	-10.3	ProFds. USH. Mid Cap Inv.	-35.7

INTEREST RATES

KEY RATES

	APR. 26	WEEK AGO	YEAR AGO
Money Market Funds	4.30%	4.29%	2.37%
90-Day Treasury Bills	4.78	4.71	2.91
2-Year Treasury Notes	4.99	4.85	3.65
10-Year Treasury Notes	5.11	5.02	4.27
30-Year Treasury Bonds	5.18	5.12	4.57
30-Year Fixed Mortgage†	6.48	6.42	5.76

†BanxQuote, Inc.

BLOOMBERG MUNI YIELD EQUIVALENTS

Taxable equivalent yields on AAA-rated, tax-exempt municipal bonds, assuming a 30% federal tax rate.

	10-YR. BOND	30-YR. BOND
General Obligations	4.15%	4.50%
Taxable Equivalent	5.93	6.43
Insured Revenue Bonds	4.22	4.66
Taxable Equivalent	6.03	6.66

THE WEEK AHEAD

PERSONAL INCOME Monday, May 1, 8:30 a.m. EDT »

Personal income is forecast to have risen by 0.4% in March, after a 0.3% gain in February. That's the median forecast of economists surveyed by Action Economics. Consumer spending probably improved 0.4%, after edging up by 0.1% in February.

PURCHASING MANAGERS' INDEX Monday, May 1, 10 a.m. EDT »

The Institute for Supply

Management's April factory activity index most likely nudged down to 55%, after easing to 55.2% in March.

CONSTRUCTION SPENDING Monday, May 1, 10 a.m. EDT »

Building outlays very likely rose by 0.4% for March. Spending grew 0.8% in February. Residential outlays will draw a lot of attention.

PRODUCTIVITY & COSTS Thursday, May 4, 8:30 a.m. EDT »

Output per hour worked

probably grew at a 3% annualized rate in the first quarter, after a 0.5% drop in the prior period. Unit labor costs likely grew by 2%, from 3.3% in the fourth quarter.

EMPLOYMENT Friday, May 5, 8:30 a.m. EDT »

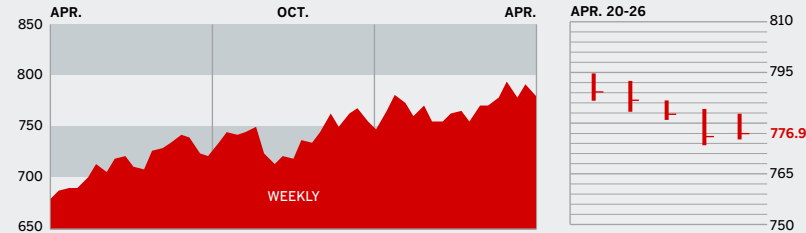
Nonfarm payrolls in April probably rose by 200,000 workers, after 211,000 jobs were added in March. The unemployment rate is forecast to remain at 4.7%, and average hourly wages probably rose 0.3%.

The BusinessWeek production index grew to 272.4 for the week ended Apr. 15, a 13.6% increase from a year ago. Before calculation of the four-week moving average, the index climbed to 273.3.

BusinessWeek online

For the BW50, more investment data, and the components of the production index visit www.businessweek.com/magazine/extra.htm

THE BUSINESSWEEK FIFTY



The BW50 trailed the broader indexes. Valero Energy and Freeport-McMoRan fell 8.5% and 9%, respectively, as investors took profits. Gilead Sciences and eBay also fell sharply after analysts downgraded their shares, while Coach sank 5.4% after offering cautious remarks for the next quarter. Baker Hughes climbed 5.3% after reporting a 89% jump in quarterly profits.

COMPANY PERFORMANCE

RANK	COMPANY	% CHANGE		RANK	COMPANY	% CHANGE	
		WEEK	SINCE 3/1/06			WEEK	SINCE 3/1/06
1	Apple Computer	3.8	-0.5	26	D. R. Horton	-6.6	-8.2
2	WellPoint	-1.8	-8.3	27	National Oilwell Varco	-4.3	12.9
3	Caremark Rx	-1.7	-10.8	28	JPMorgan Chase	0.1	3.7
4	UnitedHealth Group	-0.4	-15.9	29	Merrill Lynch	-1.0	2.3
5	Schlumberger	1.2	19.3	30	Valero Energy	-8.5	17.3
6	Occidental Petroleum	-2.2	9.4	31	ConocoPhillips	-5.1	10.2
7	Halliburton	-5.0	15.3	32	Marathon Oil	-3.1	16.0
8	Qualcomm	-2.7	8.3	33	Prudential Financial	1.5	0.6
9	Amgen	-2.7	-11.9	34	Microsoft	0.3	0.9
10	Aetna	1.7	-9.0	35	Freeport-McMoRan	-9.0	29.5
11	Lowe's	-1.5	-7.8	36	Weatherford International	8.3	21.9
12	Burlington Northern Santa Fe	-4.0	4.7	37	eBay	-15.2	-14.6
13	Motorola	-1.7	3.3	38	Coventry Health Care	0.3	-16.3
14	Yahoo	-1.6	2.9	39	CVS	-2.1	3.6
15	Goldman Sachs Group	-2.2	15.6	40	FedEx	-1.2	6.6
16	Lehman Brothers Holdings	-1.4	5.0	41	Franklin Resources	0.2	-4.9
17	Gilead Sciences	-12.0	-8.0	42	Lennar	-3.0	-6.1
18	Jabil Circuit	0.1	3.4	43	Coach	-5.4	-8.4
19	Best Buy	-1.6	5.9	44	Staples	-1.6	5.4
20	EMC	2.6	-2.4	45	NVIDIA	-1.5	21.8
21	Baker Hughes	5.3	16.3	46	Norfolk Southern	-0.9	8.2
22	Texas Instruments	1.1	16.7	47	Caterpillar	-3.8	3.9
23	Cisco Systems	-2.5	2.4	48	McKesson	-4.5	-11.2
24	Starbucks	-3.4	3.4	49	Hartford Financial Services	2.4	5.8
25	Intel	-0.4	-5.4	50	Home Depot	-1.6	-4.9

Data: Reuters

BW PRODUCTION INDEX

ONLINE RESOURCES

INDUSTRIAL OUTPUT

CHANGE FROM LAST WEEK: 0.4%
CHANGE FROM LAST YEAR: 13.6%



The production index posted its fourth straight weekly increase. Before calculation of the four-week moving average, the index improved to 273.3, from 272.9. On a seasonally adjusted basis, only three components managed to improve. The biggest increase came in truck assemblies, closely followed by crude-oil refining. Coal output was also higher. On the downside, autos suffered the largest decline. Electric-power production, steel, rail-freight traffic, and lumber were also lower.

Information on each of the index components is at www.businessweek.com.
BW production index Copyright 2006 by The McGraw-Hill Companies

BW50 More information about BW50 companies is available online.

BUSINESSWEEK INVESTING Real-time market coverage and investment tools in partnership with Standard & Poor's.

MUTUAL FUNDS Search for funds, view BW ratings, and read Q&As with fund managers.

COLUMNS Hot stocks, takeover plays, and the latest strategies for managing your money.

BusinessWeek online

For the BW50, more investment data, and the components of the production index visit www.businessweek.com/magazine/extra.htm