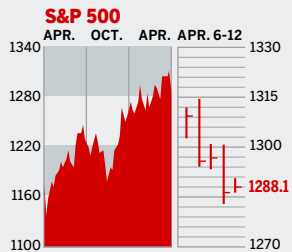


Personal Finance Figures of the Week

STOCKS



COMMENTARY

Although NASDAQ hit a 52-week high on Apr. 8, the indexes ended the week lower. Unease over rising oil prices, nearing \$70 a barrel, and bond yields, flirting with 5%, sent traders to the sidelines. Equities have risen on the hope that the Fed was done tightening, but that's no longer a sure bet. With earnings just starting to trickle in, there was little news to stimulate buying.

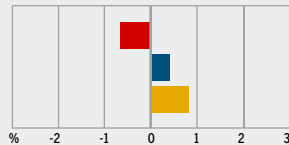
Data: Bloomberg Financial Markets, Reuters

MUTUAL FUNDS

4-WEEK TOTAL RETURN

WEEK ENDED APR. 11

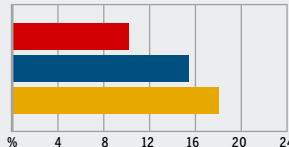
■ S&P 500 ■ U.S. DIVERSIFIED ■ ALL EQUITY



52-WEEK TOTAL RETURN

WEEK ENDED APR. 11

■ S&P 500 ■ U.S. DIVERSIFIED ■ ALL EQUITY



Data: Standard & Poor's

U.S. MARKETS

	APR. 12	WEEK	% CHANGE YEAR TO DATE	LAST 12 MONTHS
S&P 500	1288.1	-1.8	3.2	8.4
Dow Jones Industrials	11,130.0	-1.0	3.8	5.9
NASDAQ Composite	2314.7	-1.9	5.0	15.4
S&P MidCap 400	783.7	-2.0	6.2	19.4
S&P SmallCap 600	386.6	-2.4	10.3	20.6
DJ Wilshire 5000	13,016.6	-1.9	4.2	11.3

SECTORS

	APR. 12	WEEK	% CHANGE YEAR TO DATE	LAST 12 MONTHS
BusinessWeek 50*	776.0	-2.0	4.6	10.4
BW Info Tech 100**	396.4	-1.9	4.2	13.2
S&P/Citigroup Growth	604.4	-1.8	1.3	5.5
S&P/Citigroup Value	680.9	-1.8	5.1	11.5
S&P Energy	412.4	-1.4	10.6	22.6
S&P Financials	435.5	-1.9	2.1	12.8
S&P REIT	165.1	-3.6	7.9	22.6
S&P Transportation	281.8	-1.2	12.8	26.8
S&P Utilities	154.1	-3.7	-3.5	1.1
GSTI Internet	195.0	-1.6	-5.0	24.4
PSE Technology	864.7	-1.9	3.4	19.0

*Mar. 19, 1999=1000 **Feb. 7, 2000=1000

GLOBAL MARKETS

	APR. 12	WEEK	% CHANGE YEAR TO DATE	LAST 12 MONTHS
S&P Euro Plus (U.S. Dollar)	1658.0	-3.2	9.7	19.9
London (FT-SE 100)	6000.8	-0.7	6.8	21.3
Paris (CAC 40)	5085.1	-2.6	7.8	24.1
Frankfurt (DAX)	5901.3	-2.1	9.1	35.0
Tokyo (NIKKEI 225)	17,162.6	-0.5	6.5	47.1
Hong Kong (Hang Seng)	16,310.8	1.3	9.6	19.4
Toronto (S&P/TSX Composite)	12,167.7	-1.1	7.9	26.4
Mexico City (IPC)	19,322.6	-3.1	8.5	54.3

FUNDAMENTALS

	APR. 11	WEEK AGO	YEAR AGO
S&P 500 Dividend Yield	1.79%	1.72%	2.01%
S&P 500 P/E Ratio (Trailing 12 mos.)	17.9	18.2	19.7
S&P 500 P/E Ratio (Next 12 mos.)*	14.6	14.8	15.5
First Call Earnings Surprise*	17.76%	16.70%	9.93%

*First Call Corp.

TECHNICAL INDICATORS

	APR. 11	WEEK AGO	READING
S&P 500 200-day average	1246.7	1244.4	Positive
Stocks above 200-day average	63.0%	67.0%	Neutral
Options: Put/call ratio	0.73	0.76	Positive
Insiders: Vickers NYSE Sell/buy ratio	5.45	5.22	Negative

BEST-PERFORMING GROUPS

	LAST MONTH %	LAST 12 MONTHS %
Divsfd. Metals & Mining	24.8	80.1
Aluminum	16.6	76.2
Agricultural Products	16.0	71.4
Oil & Gas Refining	16.0	70.3
Constr. Materials	13.5	67.7

WORST-PERFORMING GROUPS

	LAST MONTH %	LAST 12 MONTHS %
Health-Care Supplies	-15.2	-29.2
Distillers & Vintners	-9.3	-18.3
Household Products	-7.6	-18.2
Automobiles	-7.3	-17.5
Photographic Products	-7.2	-16.1

EQUITY FUND CATEGORIES

4-WEEK TOTAL RETURN	%	52-WEEK TOTAL RETURN	%
LEADERS			
Precious Metals	10.6	Latin America	74.9
Pacific/Asia ex-Japan	7.0	Precious Metals	70.5
Diversified Pacific/Asia	6.8	Diversified Emerg. Mkts.	50.2
Natural Resources	6.5	Japan	44.0
LAGGARDS			
Health	-5.3	Domestic Hybrid	8.6
Utilities	-2.6	Utilities	10.7
Real Estate	-1.8	Large-cap Value	11.0
Financial	-0.6	Large-cap Blend	11.2

EQUITY FUNDS

4-WEEK TOTAL RETURN	%	52-WEEK TOTAL RETURN	%
LEADERS			
Frontier MicroCap	26.3	ProFunds Ultra Japan Inv.	112.1
American Heritage Grth.	25.0	U.S. Global Invsr. Gold	101.5
Dreyfus Prmr. Gr. China A	15.9	ING Russia A	97.6
Oppenheimer Gold & Mins. A	14.3	Midas	96.4
LAGGARDS			
Ameritor Investment	-16.7	Ameritor Investment	-66.7
Franklin Biotch. Dscvry. A	-9.4	Potomac Sm. Cap/Sh. Inv.	-33.8
Allianz RCM Biotech. D	-9.2	ProFds. USh. Sm. Cap Inv.	-32.6
ProFunds Biotech. Inv.	-9.0	ProFds. USh. Mid Cap Inv.	-28.3

INTEREST RATES

KEY RATES

	APR. 12	WEEK AGO	YEAR AGO
Money Market Funds	4.27%	4.25%	3.31%
90-Day Treasury Bills	4.70	4.67	2.76
2-Year Treasury Notes	4.91	4.80	3.69
10-Year Treasury Notes	4.98	4.85	4.35
30-Year Treasury Bonds	5.06	4.90	4.66
30-Year Fixed Mortgage †	6.42	6.36	5.94

†BanxQuote, Inc.

BLOOMBERG MUNI YIELD EQUIVALENTS

Taxable equivalent yields on AAA-rated, tax-exempt municipal bonds, assuming a 30% federal tax rate.

	10-YR. BOND	30-YR. BOND
General Obligations	4.09%	4.45%
Taxable Equivalent	5.84	6.36
Insured Revenue Bonds	4.16	4.62
Taxable Equivalent	5.94	6.60

THE WEEK AHEAD

PRODUCER PRICE INDEX

Tuesday, Apr. 18, 8:30 a.m. EDT » Producer prices are forecast to have increased 0.4% in March as energy prices bounced back a bit. That's the median forecast of economists polled by Action Economics. The index plunged 1.4% during February. Excluding food and energy, wholesale prices most likely rose by 0.2%, following a 0.3% gain for the previous month.

RESIDENTIAL CONSTRUCTION

Tuesday, Apr. 18, 8:30 a.m. EDT » Housing starts in March probably cooled down a little more, to an annual rate of 2.05 million. Starts in February posted a significant slowdown, to a yearly pace of 2.12 million.

CONSUMER PRICE INDEX

Wednesday, Apr. 19, 8:30 a.m. EDT » March consumer prices for goods and services most likely increased by 0.3%, after

edging up 0.1% during February. Minus food and energy, prices are expected to have grown by 0.2%, following a 0.1% rise.

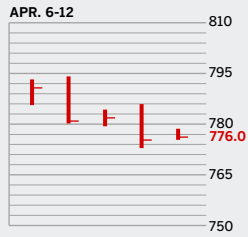
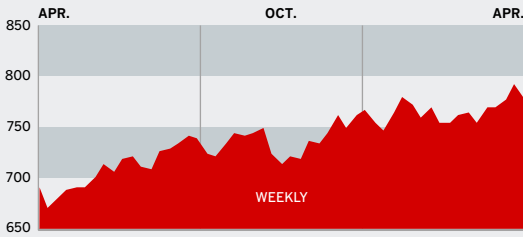
LEADING INDICATORS Thursday, Apr. 20, 10 a.m. EDT » The Conference Board's index of leading economic indicators probably held steady in March. The February index slipped 0.2%, due in large part to a slowdown in housing starts and an increase in weekly jobless claims.

The BusinessWeek production index climbed to 270.4 for the week ended Apr. 1, a 13.2% increase from a year ago. Before calculation of the four-week moving average, the index improved to 271.9.

BusinessWeek online

For the BW50, more investment data, and the components of the production index visit www.businessweek.com/magazine/extra.htm

THE BUSINESSWEEK FIFTY



The BW50 fell 2% for the week, lagging the indexes. Weakness in such health-care outfits as WellPoint and Coventry, off 4.9% and 7.1%, respectively, weighed on the list. It was also a tough week for homebuilder D.R. Horton, which lost 6% after analysts lowered their earnings estimates. Motorola, however, benefited as analysts raised estimates. Caterpillar rose 2.7%.

COMPANY PERFORMANCE

RANK	COMPANY	WEEK	% CHANGE	SINCE 3/1/06
1	Apple Computer	-0.7	-2.6	
2	WellPoint	-4.9	-4.7	
3	Caremark Rx	-1.5	-5.5	
4	UnitedHealth Group	-3.3	-8.2	
5	Schlumberger	-7.2	7.3	
6	Occidental Petroleum	-1.2	5.2	
7	Halliburton	-0.8	12.8	
8	Qualcomm	-1.4	8.1	
9	Amgen	-4.0	-7.3	
10	Aetna	-4.8	-8.0	
11	Lowe's	-3.8	-5.9	
12	Burlington Northern Santa Fe	-3.6	5.6	
13	Motorola	3.0	12.1	
14	Yahoo	-3.1	-3.0	
15	Goldman Sachs Group	-0.8	12.9	
16	Lehman Brothers Holdings	0.4	2.1	
17	Gilead Sciences	-4.4	-1.9	
18	Jabil Circuit	-1.0	11.6	
19	Best Buy	-2.3	5.6	
20	EMC	-4.1	-5.6	
21	Baker Hughes	1.2	4.3	
22	Texas Instruments	-1.1	10.1	
23	Cisco Systems	-3.1	3.9	
24	Starbucks	1.4	4.7	
25	Intel	-1.8	-7.2	

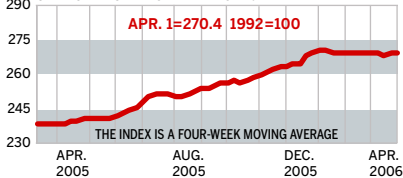
RANK	COMPANY	WEEK	% CHANGE	SINCE 3/1/06
26	D. R. Horton	-6.0	-3.1	
27	National Oilwell Varco	1.2	7.9	
28	JPMorgan Chase	-1.5	1.8	
29	Merrill Lynch	-2.5	0.5	
30	Valero Energy	2.0	18.6	
31	ConocoPhillips	1.2	10.4	
32	Marathon Oil	-0.5	12.3	
33	Prudential Financial	-2.7	-2.8	
34	Microsoft	-1.9	1.2	
35	Freeport-McMoRan	-2.3	23.7	
36	Weatherford International	-5.2	4.5	
37	eBay	-0.2	-4.0	
38	Coventry Health Care	-7.1	-15.2	
39	CVS	1.7	6.6	
40	FedEx	-2.8	6.7	
41	Franklin Resources	-2.2	-8.3	
42	Lennar	-4.2	-0.4	
43	Coach	-2.4	-5.7	
44	Staples	-2.9	4.8	
45	NVIDIA	-0.3	29.2	
46	Norfolk Southern	-2.7	6.7	
47	Caterpillar	2.7	6.5	
48	McKesson	-1.2	-4.3	
49	Hartford Financial Services	-3.0	-2.1	
50	Home Depot	-3.9	-2.8	

Data: Reuters

BW PRODUCTION INDEX

INDUSTRIAL OUTPUT

CHANGE FROM LAST WEEK: 0.3%
CHANGE FROM LAST YEAR: 13.2%



The production index inched higher during the latest period. Before calculation of the four-week moving average, the index edged up to 271.9, from 271.6. On a seasonally adjusted basis, auto and truck assemblies showed modest gains. Coal output and rail-freight traffic were also higher. On the downside, electric power production and crude-oil refining posted the largest declines, followed by lumber and steel. In March the index average slipped to 270.1, from 270.4 in February.

Information on each of the index components is at www.businessweek.com.
BW production index Copyright 2006 by The McGraw-Hill Companies

ONLINE RESOURCES

BW50 More information about BW50 companies is available online.

BUSINESSWEEK INVESTING Real-time market coverage and investment tools in partnership with Standard & Poor's.

MUTUAL FUNDS Search for funds, view BW ratings, and read Q&As with fund managers.

COLUMNS Hot stocks, takeover plays, and the latest strategies for managing your money.

BusinessWeek online

For the BW50, more investment data, and the components of the production index visit www.businessweek.com/magazine/extra.htm