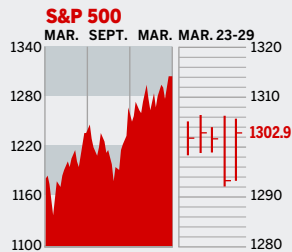


Personal Business Figures of the Week

STOCKS



COMMENTARY

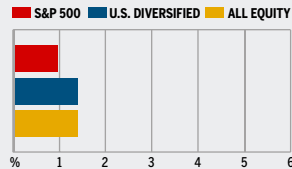
The Fed's Mar. 28 rate hike—its 15th straight—took the wind out of stocks. Although the increase had been expected, traders were dismayed that there was no hint of when the central bank's work would be done. But equities made up some ground the next day. Apple and Google sent the tech-laden NASDAQ to a five-year high, while Boeing stabilized the Dow.

Data: Bloomberg Financial Markets, Reuters

MUTUAL FUNDS

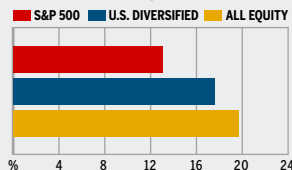
4-WEEK TOTAL RETURN

WEEK ENDED MAR. 28



52-WEEK TOTAL RETURN

WEEK ENDED MAR. 28



Data: Standard & Poor's

U.S. MARKETS

	MAR. 29	WEEK	% CHANGE YEAR TO DATE	LAST 12 MONTHS
S&P 500	1302.9	-0.2	4.4	11.8
Dow Jones Industrials	11,215.7	-0.9	4.6	7.8
NASDAQ Composite	2337.8	1.5	6.0	18.4
S&P MidCap 400	791.6	1.3	7.3	22.1
S&P SmallCap 600	393.9	1.9	12.3	24.6
DJ Wilshire 5000	13,175.6	0.3	5.4	14.8

SECTORS

	MAR. 29	WEEK	% CHANGE YEAR TO DATE	LAST 12 MONTHS
BusinessWeek 50*	777.9	1.1	4.9	13.0
BW Info Tech 100**	396.1	0.8	4.1	14.7
S&P/Citigroup Growth	613.6	-0.3	2.9	9.0
S&P/Citigroup Value	686.1	0.0	6.0	14.7
S&P Energy	409.6	3.7	9.9	24.9
S&P Financials	439.9	-1.0	3.2	16.0
S&P REIT	176.9	1.8	15.6	35.3
S&P Transportation	276.4	0.2	10.6	24.9
S&P Utilities	159.2	-0.9	-0.3	10.3
GSTI Internet	194.5	2.4	-5.2	28.4
PSE Technology	875.7	0.4	4.7	21.8

*Mar. 19, 1999=1000 **Feb. 7, 2000=1000

GLOBAL MARKETS

	MAR. 29	WEEK	% CHANGE YEAR TO DATE	LAST 12 MONTHS
S&P Euro Plus (U.S. Dollar)	1657.8	-1.3	9.7	19.9
London (FT-SE 100)	5959.2	-0.8	6.1	21.1
Paris (CAC 40)	5180.3	-0.3	9.9	26.9
Frankfurt (DAX)	5914.8	-0.3	9.4	35.9
Tokyo (NIKKEI 225)	16,938.4	2.7	5.1	46.0
Hong Kong (Hang Seng)	15,745.1	0.7	5.8	17.4
Toronto (S&P/TSX Composite)	12,190.6	1.8	8.1	29.8
Mexico City (IPC)	19,132.3	-2.4	7.5	52.1

FUNDAMENTALS

	MAR. 28	WEEK AGO	YEAR AGO
S&P 500 Dividend Yield	1.79%	1.78%	2.04%
S&P 500 P/E Ratio (Trailing 12 mos.)	17.9	18.0	19.7
S&P 500 P/E Ratio (Next 12 mos.)*	15.1	15.1	15.7
First Call Earnings Revision*	0.44%	0.08%	0.79%

*First Call Corp.

TECHNICAL INDICATORS

	MAR. 28	WEEK AGO	READING
S&P 500 200-day average	1242.1	1239.5	Positive
Stocks above 200-day average	67.0%	66.0%	Neutral
Options: Put/call ratio	0.78	0.69	Positive
Insiders: Vickers NYSE Sell/buy ratio	5.51	5.47	Negative

BEST-PERFORMING GROUPS

Group	LAST MONTH %	Group	LAST 12 MONTHS %
Steel	20.5	Steel	77.5
Divsfd. Metals & Mining	14.1	Oil & Gas Equip.	72.7
Oil & Gas Refining	11.1	Oil & Gas Refining	69.2
Oil & Gas Drilling	10.0	Divsfd. Metals & Mining	66.6
Constr. Materials	9.7	Constr. & Engineering	63.3

WORST-PERFORMING GROUPS

Group	LAST MONTH %	Group	LAST 12 MONTHS %
Semiconductor Equip.	-5.0	Automobiles	-24.9
Gas Utilities	-4.9	Broadcasting	-18.1
Consumer Finance	-4.1	Home Furnishings	-14.2
Indpt. Power & Energy	-3.6	Health-Care Facilities	-13.3
Electric Utilities	-3.2	Diversified Chemicals	-12.7

EQUITY FUND CATEGORIES

4-WEEK TOTAL RETURN	%	52-WEEK TOTAL RETURN	%
LEADERS			
Natural Resources	4.6	Latin America	74.7
Real Estate	3.8	Precious Metals	59.4
Precious Metals	3.6	Diversified Emerg. Mkts.	47.9
Communications	3.1	Natural Resources	40.9
LAGGARDS			
Latin America	-4.8	Domestic Hybrid	10.1
Utilities	-1.6	Large-cap Blend	13.3
Health	-1.0	Miscellaneous	13.3
Diversified Emerg. Mkts.	-0.9	Large-cap Value	13.4

EQUITY FUNDS

4-WEEK TOTAL RETURN	%	52-WEEK TOTAL RETURN	%
LEADERS			
American Heritage	12.5	ProFunds Ultra Japan Inv.	102.2
Van Wagoner Sm. Cap. Gr.	10.1	ING Russia A	88.1
U.S. Global Invs. Gold	9.7	Midas	87.7
U.S. Gbl. Invs. Prc. Mnl.	9.3	U.S. Global Invs. Gold	86.3
LAGGARDS			
Ameritor Investment	-16.7	Ameritor Investment	-68.8
iShares MSCI Brazil Idx.	-9.0	Potomac Sm. Cap/Sh. Inv.	-37.4
Allianz RCM Biotech. D	-7.0	Profds. USH. Sm. Cap Inv.	-36.1
T. Rowe Price Emg. Europe	-5.5	American Heritage Grth.	-33.3

INTEREST RATES

KEY RATES

	MAR. 29	WEEK AGO	YEAR AGO
Money Market Funds	4.20%	4.09%	2.26%
90-Day Treasury Bills	4.62	4.68	2.83
2-Year Treasury Notes	4.80	4.74	3.84
10-Year Treasury Notes	4.81	4.70	4.58
30-Year Treasury Bonds	4.84	4.72	4.84
30-Year Fixed Mortgage †	6.29	6.25	6.06

†BanxQuote, Inc.

BLOOMBERG MUNI YIELD EQUIVALENTS

Taxable equivalent yields on AAA-rated, tax-exempt municipal bonds, assuming a 30% federal tax rate.

	10-YR. BOND	30-YR. BOND
General Obligations	3.96%	4.37%
Taxable Equivalent	5.66	6.24
Insured Revenue Bonds	4.01	4.54
Taxable Equivalent	5.73	6.49

THE WEEK AHEAD

VEHICLE SALES Monday, Apr. 3

» March sales of light vehicles most likely posted a narrow gain, to an annualized rate of 16.8 million, according to WardsAuto.com. In February sales slowed to a pace of 16.6 million units.

PURCHASING MANAGERS' INDEX Monday, Apr. 3, 10 a.m. EDT

» The Institute for Supply Management's March factory activity index is forecast to have come in at 57%. That's the median

forecast among economists surveyed by Action Economics. In February the index rose to 56.7%.

CONSTRUCTION SPENDING Monday, Apr. 3, 10 a.m. EDT

» Building outlays probably improved by 0.4% in February, following a 0.2% increase during January.

EMPLOYMENT Friday, Apr. 7, 8:30 a.m. EDT » Nonfarm payrolls in March most likely rose by 200,000 workers, after the

economy added 243,000 jobs in February. The unemployment rate is expected to remain at 4.8%. Average weekly wages probably rose 0.2%, after growing 0.3% in the prior month.

INSTALLMENT CREDIT Friday, Apr. 7, 3 p.m. EDT

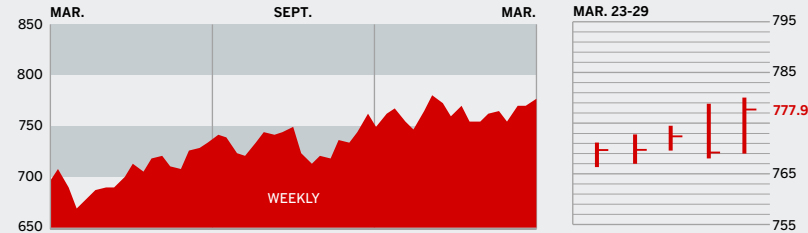
» Consumers most likely assumed an additional \$3.9 billion of debt in February, the same amount by which installment credit grew during January.

The *BusinessWeek* production index was virtually unchanged at 269.2 for the week ended Mar. 18, up 12.7% from a year ago. Before calculation of the four-week moving average, the index held at 269.1.

BusinessWeek online

For the BW50, more investment data, and the components of the production index visit www.businessweek.com/extras

THE BUSINESSWEEK FIFTY



It was a strong showing for the BW50, which easily outpaced the S&P 500 and the Dow, while trailing slightly the NASDAQ Composite. Tech stocks such as NVIDIA, Jabil Circuit, and Texas Instruments rose strongly as investors bet on growth. But energy stocks did well too, helped by \$66 per barrel oil. Financial shares were a mixed bag, as capital costs rose after the Fed's hike.

COMPANY PERFORMANCE

RANK	COMPANY	% CHANGE		RANK	COMPANY	% CHANGE	
		WEEK	SINCE 3/1/06			WEEK	SINCE 3/1/06
1	Apple Computer	1.1	-9.0	26	D. R. Horton	4.8	-0.4
2	WellPoint	-2.0	0.5	27	National Oilwell Varco	9.4	6.1
3	Caremark Rx	-0.8	-0.1	28	JPMorgan Chase	-0.9	1.3
4	UnitedHealth Group	-1.2	-3.9	29	Merrill Lynch	1.1	1.5
5	Schlumberger	5.6	10.3	30	Valero Energy	5.0	12.2
6	Occidental Petroleum	3.4	4.4	31	ConocoPhillips	7.1	6.3
7	Halliburton	7.6	9.2	32	Marathon Oil	0.9	9.0
8	Qualcomm	1.9	7.5	33	Prudential Financial	1.2	0.3
9	Amgen	-0.6	-4.6	34	Microsoft	-0.5	0.6
10	Aetna	-1.9	-0.9	35	Freeport-McMoRan Copper & Gold	15.5	17.9
11	Lowe's	-2.3	-3.7	36	Weatherford International	9.5	5.9
12	Burlington Northern Santa Fe	1.4	4.6	37	eBay	3.8	-1.8
13	Motorola	4.4	6.4	38	Coventry Health Care	-0.9	-7.0
14	Yahoo	5.9	1.6	39	CVS	2.0	6.1
15	Goldman Sachs Group	3.3	11.0	40	FedEx	-2.3	4.3
16	Lehman Brothers Holdings	-0.5	-1.4	41	Franklin Resources	-4.3	-7.1
17	Gilead Sciences	-1.1	-0.4	42	Lennar	6.8	2.1
18	Jabil Circuit	10.9	12.1	43	Coach	-1.9	-2.2
19	Best Buy	-1.2	1.2	44	Staples	3.5	4.4
20	EMC	-3.1	-3.7	45	NVIDIA	15.7	21.1
21	Baker Hughes	6.0	2.0	46	Norfolk Southern	-2.2	4.5
22	Texas Instruments	6.6	7.2	47	Caterpillar	-3.3	0.8
23	Cisco Systems	0.7	6.6	48	McKesson	-2.9	-3.4
24	Starbucks	2.7	3.3	49	Hartford Financial Services Group	-3.2	-2.7
25	Intel	-0.8	-3.8	50	Home Depot	-1.1	1.8

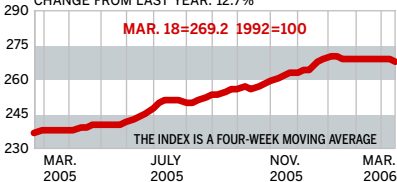
Data: Reuters

BW PRODUCTION INDEX

ONLINE RESOURCES

INDUSTRIAL OUTPUT

CHANGE FROM LAST WEEK: -0.0%
CHANGE FROM LAST YEAR: 12.7%



The production index inched a little lower during the latest period. Before calculation of the four-week moving average, however, the index held steady at 269.1. On a seasonally adjusted basis, the components were evenly split. Electric-power production and crude-oil refining posted the biggest increases. Auto and truck assemblies managed small gains as well. On the downside, coal output suffered the steepest fall, followed by rail-freight traffic, lumber, and steel.

Information on each of the index components is at www.businessweek.com.
BW production index Copyright 2005 by The McGraw-Hill Companies

BW50 More information about BW50 companies is available online.

BUSINESSWEEK INVESTING Real-time market coverage and investment tools in partnership with Standard & Poor's.

MUTUAL FUNDS Search for funds, view BW ratings, and read Q&As with fund managers.

COLUMNS Hot stocks, takeover plays, and the latest strategies for managing your money.

BusinessWeek online

For the BW50, more investment data, and the components of the production index visit www.businessweek.com/magazine/extra.htm