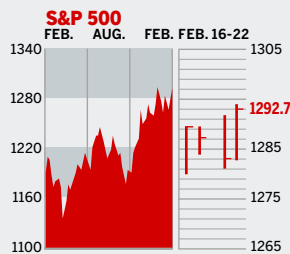


# Personal Business Figures of the Week

## STOCKS



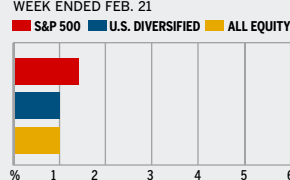
### COMMENTARY

The Dow Jones Industrials hit a new multiyear high on Feb. 22, rising on the wings of Boeing, which investors bet would benefit from strong foreign demand. AmEx and Caterpillar, Dow pillars, hit new highs, too. Tamer inflation news aided most stocks, although NASDAQ was weighed down by Dell, which cautioned on the next quarter. Oil prices were volatile, thanks to unrest in Nigeria.

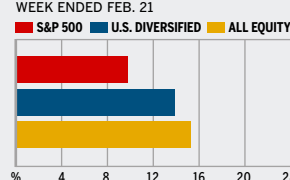
Data: Bloomberg Financial Markets, Reuters

## MUTUAL FUNDS

### 4-WEEK TOTAL RETURN



### 52-WEEK TOTAL RETURN



Data: Standard & Poor's

## U.S. MARKETS

	FEB. 22	WEEK	% CHANGE YEAR TO DATE	LAST 12 MONTHS
S&P 500	1292.7	1.0	3.6	9.2
Dow Jones Industrials	11,137.2	0.7	3.9	5.0
NASDAQ Composite	2283.2	0.3	3.5	12.5
S&P MidCap 400	779.4	1.5	5.6	19.8
S&P SmallCap 600	378.6	1.3	8.0	18.0
DJ Wilshire 5000	13,005.8	1.1	4.1	11.6

## SECTORS

	FEB. 21	WEEK	% CHANGE YEAR TO DATE	LAST 12 MONTHS
BusinessWeek 50*	762.1	1.0	2.7	7.6
BW Info Tech 100**	385.6	-0.1	1.3	8.5
S&P/BARRA Growth	611.1	0.7	2.5	7.3
S&P/BARRA Value	678.0	1.3	4.7	11.1
S&P Energy	395.6	2.7	6.1	19.8
S&P Financials	441.7	1.8	3.6	12.1
S&P REIT	168.9	3.0	10.4	25.5
S&P Transportation	264.3	0.0	5.8	18.8
S&P Utilities	164.5	2.5	3.1	15.2
GSTI Internet	196.2	0.3	-4.4	25.6
PSE Technology	874.8	0.3	4.6	18.4

\*Mar. 19, 1999=1000 \*\*Feb. 7, 2000=1000

## GLOBAL MARKETS

	FEB. 22	WEEK	% CHANGE YEAR TO DATE	LAST 12 MONTHS
S&P Euro Plus (U.S. Dollar)	1627.6	2.6	7.7	15.5
London (FT-SE 100)	5872.4	1.4	4.5	16.7
Paris (CAC 40)	5041.6	2.2	6.9	26.0
Frankfurt (DAX)	5862.1	1.7	8.4	35.6
Tokyo (NIKKEI 225)	15,781.8	-0.9	-2.0	36.1
Hong Kong (Hang Seng)	15,635.7	1.4	5.1	11.0
Toronto (S&P/TSX Composite)	11,800.2	2.1	4.7	22.4
Mexico City (IPC)	18,780.5	3.4	5.5	38.9

## FUNDAMENTALS

	FEB. 21	WEEK AGO	YEAR AGO
S&P 500 Dividend Yield	1.78%	1.78%	1.99%
S&P 500 P/E Ratio (Trailing 12 mos.)	18.1	18.0	20.1
S&P 500 P/E Ratio (Next 12 mos.)*	15.0	14.9	16.0
First Call Earnings Revision*	-2.00%	-1.59%	-0.02%

\*First Call Corp.

## TECHNICAL INDICATORS

	FEB. 21	WEEK AGO	READING
S&P 500 200-day average	1228.9	1226.5	Positive
Stocks above 200-day average	66.0%	65.0%	Neutral
Options: Put/call ratio	0.71	0.71	Positive
Insiders: Vickers NYSE Sell/buy ratio	4.34	4.05	Negative

## BEST-PERFORMING GROUPS

Group	LAST MONTH %	LAST 12 MONTHS %
Steel	19.8	56.7
Constr. & Farm Mchnry.	15.5	53.0
Constr. Materials	15.4	52.3
Intgrd. Telecomms. Svcs	13.3	51.3
Photographic Products	12.9	51.3
Oil & Gas Equipment	5.7	56.7
Divsfd. Metals & Mining	5.3	53.0
Railroads	5.2	52.3
Fertilizers & Ag. Chems.	5.1	51.3
Oil & Gas Refining	5.1	51.3

## WORST-PERFORMING GROUPS

Group	LAST MONTH %	LAST 12 MONTHS %
Internet Retailers	-16.0	-38.4
Tires & Rubber	-14.7	-20.1
Oil & Gas Refining	-11.3	-18.5
Oil & Gas Drilling	-10.4	-17.7
Oil & Gas St. & Tr.	-8.1	-17.4
Automobiles	-38.4	-38.4
Home Entmnt. Software	-20.1	-20.1
Photographic Products	-18.5	-18.5
Auto Parts & Equip.	-17.7	-17.7
Diversified Chemicals	-17.4	-17.4

## EQUITY FUND CATEGORIES

Category	4-WEEK TOTAL RETURN %	52-WEEK TOTAL RETURN %
<b>LEADERS</b>		
Communications	4.5	Latin America 67.5
Latin America	3.1	Precious Metals 44.9
Real Estate	3.0	Diversified Emerg. Mkts. 41.2
Pacific/Asia ex-Japan	2.9	Natural Resources 36.2
<b>LAGGARDS</b>		
Japan	-4.4	Domestic Hybrid 7.9
Natural Resources	-3.8	Miscellaneous 10.0
Diversified Pacific/Asia	-1.3	Large-cap Blend 10.4
Utilities	-0.1	Large-cap Value 10.9

## EQUITY FUNDS

Fund	4-WEEK TOTAL RETURN %	52-WEEK TOTAL RETURN %
<b>LEADERS</b>		
ProfFds. UltTelcmm. Inv.	16.5	ING Russia A 92.7
Janus Asp. Life Scncs. Srvc.	9.9	ProfFds Ultra Japan Inv. 87.3
ProfFds. Mble. Tlcmm. Inv.	9.8	T. Rowe Price Latin Am. 75.6
Dreyfus Prmr. Gr. China A	9.4	iShares MSCI Brazil Idx. 74.9
<b>LAGGARDS</b>		
Ameritor Investment	-14.3	Ameritor Investment -66.7
Fidelity Japan Small Co.	-10.6	American Heritage Grth. -42.9
Fidelity Sel. Enrgy. Serv.	-8.2	ProfFds. Ush. Sm. Cap Inv. -29.1
Japan Smaller Cos.	-7.9	ProfFds. Ush. Mid Cap Inv. -28.5

## INTEREST RATES

### KEY RATES

	FEB. 22	WEEK AGO	YEAR AGO
Money Market Funds	4.03%	4.01%	2.01%
90-Day Treasury Bills	4.57	4.55	2.63
2-Year Treasury Notes	4.67	4.69	3.43
10-Year Treasury Notes	4.53	4.60	4.29
30-Year Treasury Bonds	4.48	4.57	4.69
30-Year Fixed Mortgage †	6.16	6.25	5.57

†BanxQuote, Inc.

## BLOOMBERG MUNI YIELD EQUIVALENTS

Taxable equivalent yields on AAA-rated, tax-exempt municipal bonds, assuming a 30% federal tax rate.

	10-YR. BOND	30-YR. BOND
General Obligations	3.83%	4.34%
Taxable Equivalent	5.47	6.20
Insured Revenue Bonds	3.95	4.46
Taxable Equivalent	5.64	6.37

## THE WEEK AHEAD

**NEW HOME SALES** Monday, Feb. 27, 8:30 a.m. EST » January new home sales most likely edged up to an annual rate of 1.28 million, from a pace of 1.27 million in December. That's the median forecast of economists polled by Action Economics.

**GROSS DOMESTIC PRODUCT (REVISED)** Tuesday, Feb. 28, 8:30 a.m., EST » The second look at fourth-quarter real gross domestic product is expected to be

revised up to an annualized growth rate of 1.5%, from an initial 1.1%.

**CONSUMER CONFIDENCE** Tuesday, Feb. 28, 10 a.m., EST » The Conference Board's February consumer confidence index most likely moderated a little to 105, from 106.3 in January.

**PERSONAL INCOME** Wednesday, Mar. 1, 8:30 a.m. EST » January incomes are forecast to have grown 0.5%, after a 0.4% rise. Consumer spending probably

rose 0.5%, following a 0.9% gain in December.

**PURCHASING MANAGERS' INDEX** Wednesday, Mar. 1, 10 a.m. EST » The Institute for Supply Management's February factory activity index probably improved to 55.8%, from 54.8% in January.

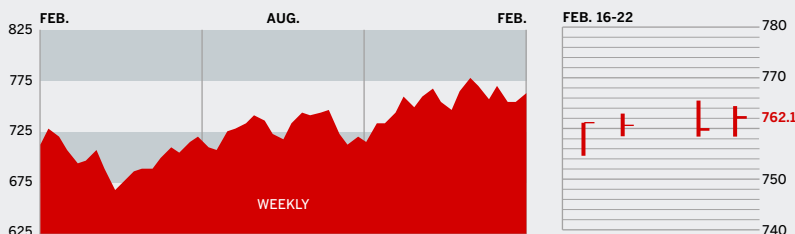
**CONSTRUCTION SPENDING** Wednesday, Mar. 1, 10 a.m. EST » In January, building outlays probably increased 0.8%, after growing 1% in December.

The *BusinessWeek* production index climbed to 270.4 for the week ended Feb. 11, and stood 13.8% above the year-ago level. Before calculation of the four-week moving average, the index slipped to 270.9.

**BusinessWeek** online

For the BW50, more investment data, and the components of the production index visit [www.businessweek.com/extras](http://www.businessweek.com/extras)

## THE BUSINESSWEEK FIFTY



The BW50 rose 1% for the week, beating out the returns of the Dow and NASDAQ, and tying the S&P 500. Energy stocks drove the move to the upside: Valero Energy climbed 79%, followed by ConocoPhillips and Oxy Petroleum. Shares of Boston Scientific climbed 6.7% in arbitrage-related activity. Dell lost 6.4% as investors were disappointed by the company's outlook.

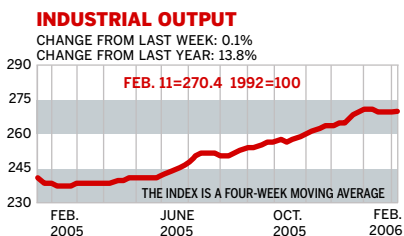
### COMPANY PERFORMANCE

RANK	COMPANY	% CHANGE	
		WEEK	SINCE 3/1/05
1	Nucor	5.5	37.0
2	ConocoPhillips	5.5	11.6
3	ChevronTexaco	2.3	-7.8
4	Valero Energy	7.9	53.1
5	UnitedHealth Group	0.9	30.6
6	Occidental Petroleum	5.0	28.6
7	Exxon Mobil	0.8	-4.8
8	Yahoo	0.4	2.8
9	Apache	0.2	8.9
10	Devon Energy	2.9	28.2
11	Pulte Homes	5.5	4.4
12	Qualcomm	0.9	32.5
13	Apple Computer	3.0	59.0
14	Dell	-6.4	-25.8
15	Paccar	1.5	-6.4
16	Coach	3.2	31.8
17	Sunoco	2.6	51.4
18	eBay	1.7	-3.5
19	Burlington Resources	3.2	82.4
20	Progressive	3.2	24.8
21	Caremark Rx	-0.7	29.1
22	Caterpillar	2.0	53.7
23	Phelps Dodge	1.9	37.4
24	Autodesk	-1.7	22.2
25	Johnson & Johnson	-0.1	-10.0

RANK	COMPANY	% CHANGE	
		WEEK	SINCE 3/1/05
26	Carnival	-2.0	-4.0
27	Adobe Systems	2.9	25.5
28	Cummins	3.5	46.5
29	Boston Scientific	6.7	-26.1
30	EOG Resources	1.7	54.9
31	Symantec	1.4	-19.9
32	Starbucks	2.4	39.0
33	Electronic Arts	-2.6	-20.3
34	WellPoint	-0.3	28.7
35	Deere	4.8	10.9
36	United States Steel	1.7	-10.5
37	Zimmer Holdings	1.7	-19.0
38	FedEx	2.0	8.8
39	Chubb	2.2	22.1
40	XTO Energy	2.1	23.6
41	Microsoft	-0.6	6.2
42	Danaher	5.7	12.9
43	Dow Chemical	-0.5	-21.7
44	Cisco Systems	-1.4	12.9
45	Gilead Sciences	1.1	79.1
46	Nike	2.0	-1.2
47	Anadarko Petroleum	4.4	32.1
48	Bank of America	1.6	-3.4
49	Eaton	1.9	0.2
50	3M	-0.2	-13.1

Data: Reuters

## BW PRODUCTION INDEX



The production index managed another small gain. Before calculation of the four-week moving average, however, the index ticked down to 270.9, from 271.2. On a seasonally adjusted basis, only three components posted gains. The biggest rise came in electric-power production, sparked by cooler temperatures. Steel and lumber were also up. Auto and truck assemblies slid the most, followed by coal and rail-freight traffic. Crude-oil refining was nearly unchanged on the week.

Information on each of the index components is at [www.businessweek.com](http://www.businessweek.com).  
BW production index Copyright 2005 by The McGraw-Hill Companies

## ONLINE RESOURCES

**BW50** More information about BW50 companies is available online.

**BUSINESSWEEK INVESTING** Real-time market coverage and investment tools in partnership with Standard & Poor's.

**MUTUAL FUNDS** Search for funds, view BW ratings, and read Q&As with fund managers.

**COLUMNS** Hot stocks, takeover plays, and the latest strategies for managing your money.

**BusinessWeek** online

For the BW50, more investment data, and the components of the production index visit [www.businessweek.com/extras](http://www.businessweek.com/extras)