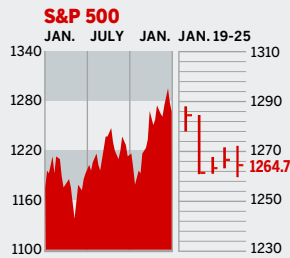


Personal Business Figures of the Week

STOCKS



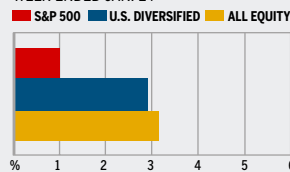
COMMENTARY

It was a tough week for stocks, which fell sharply on Jan. 20 as concerns over Iran, rising oil prices, and poor earnings from GE and Citigroup sent investors scurrying. Rallies on Jan. 23-24 fizzled, despite good earnings from such blue chips as United Technologies and McDonald's. After jumping in the first 10 days of '06, the major indexes are about where they finished in '05.

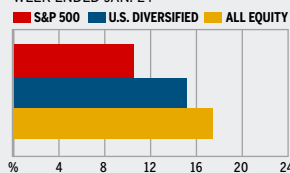
Data: Bloomberg Financial Markets, Reuters

MUTUAL FUNDS

4-WEEK TOTAL RETURN



52-WEEK TOTAL RETURN



Data: Standard & Poor's

U.S. MARKETS

	JAN. 25	WEEK	% CHANGE YEAR TO DATE	LAST 12 MONTHS
S&P 500	1264.7	-1.0	1.3	8.2
Dow Jones Industrials	10,709.7	-1.3	-0.1	2.4
NASDAQ Composite	2260.7	-0.8	2.5	11.9
S&P MidCap 400	763.0	0.2	3.4	20.9
S&P SmallCap 600	369.9	1.4	5.5	19.1
DJ Wilshire 5000	12,749.1	-0.7	2.0	11.1

SECTORS

	JAN. 24	WEEK AGO	YEAR AGO
BusinessWeek 50*	758.1	-1.7	2.2
BW Info Tech 100**	385.5	-0.9	1.3
S&P/BARRA Growth	603.0	-1.4	1.1
S&P/BARRA Value	657.5	-0.7	1.5
S&P Energy	409.8	0.9	10.0
S&P Financials	424.7	-1.6	-0.4
S&P REIT	161.8	1.5	5.7
S&P Transportation	256.8	3.7	2.8
S&P Utilities	164.8	-0.4	3.2
GSTI Internet	207.2	0.6	1.0
PSE Technology	860.3	-1.4	2.9

*Mar. 19, 1999=1000 **Feb. 7, 2000=1000

GLOBAL MARKETS

	JAN. 25	WEEK	% CHANGE YEAR TO DATE	LAST 12 MONTHS
S&P Euro Plus (U.S. Dollar)	1578.1	1.7	4.4	18.2
London (FT-SE 100)	5704.4	0.7	1.5	17.8
Paris (CAC 40)	4791.0	0.4	1.6	23.4
Frankfurt (DAX)	5427.1	0.6	0.3	28.2
Tokyo (NIKKEI 225)	15,651.0	2.0	-2.9	38.8
Hong Kong (Hang Seng)	15,520.4	0.3	4.3	14.3
Toronto (S&P/TSX Composite)	11,675.2	1.0	3.6	27.9
Mexico City (IPC)	18,866.4	3.3	6.0	46.6

FUNDAMENTALS

	JAN. 24	WEEK AGO	YEAR AGO
S&P 500 Dividend Yield	1.79%	1.76%	1.99%
S&P 500 P/E Ratio (Trailing 12 mos.)	18.2	18.7	19.7
S&P 500 P/E Ratio (Next 12 mos.)*	14.8	14.9	15.9
First Call Earnings Surprise*	3.81%	3.88%	2.61%

*First Call Corp.

TECHNICAL INDICATORS

	JAN. 24	WEEK AGO	READING
S&P 500 200-day average	1218.1	1215.9	Positive
Stocks above 200-day average	67.0%	66.0%	Neutral
Options: Put/call ratio	0.75	0.61	Positive
Insiders: Vickers NYSE Sell/buy ratio	3.88	3.96	Negative

BEST-PERFORMING GROUPS

	LAST MONTH %	LAST 12 MONTHS %
Steel	17.2	Oil & Gas Refining 96.2
Oil & Gas Equipment	17.0	Oil & Gas Equipment 74.1
Automobiles	16.5	Oil & Gas Exploration 72.9
IT Consulting	12.6	Constr. & Engineering 70.2
Gold Mining	11.9	Oil & Gas Drilling 65.5

WORST-PERFORMING GROUPS

	LAST MONTH %	LAST 12 MONTHS %
Internet Software	-15.1	Automobiles -34.7
Educational Services	-12.2	Photographic Products -19.9
Commercial Printing	-7.9	Auto Parts & Equipment -19.6
Conglomerates	-7.7	Brewers -15.7
Semiconductors	-7.0	Food Wholesalers -13.8

EQUITY FUND CATEGORIES

4-WEEK TOTAL RETURN	%	52-WEEK TOTAL RETURN	%
LEADERS		LEADERS	
Latin America	13.9	Latin America	81.4
Precious Metals	13.2	Natural Resources	58.2
Natural Resources	12.6	Precious Metals	54.3
Diversified Emerg. Mkts.	9.2	Diversified Emerg. Mkts.	48.4
LAGGARDS		LAGGARDS	
Financial	0.2	Domestic Hybrid	8.8
Health	0.9	Miscellaneous	10.7
Japan	1.1	Large-cap Blend	11.0
Domestic Hybrid	1.4	Financial	11.3

EQUITY FUNDS

4-WEEK TOTAL RETURN	%	52-WEEK TOTAL RETURN	%
LEADERS		LEADERS	
ProFunds Oil & Gas Inv.	20.0	ING Russia A	97.9
ProFunds Precs. Mkts. Inv.	19.8	iShares MSCI Brazil Idx.	91.2
iShares MSCI Brazil Idx.	19.6	T. Rowe Price Latin Am.	90.0
U.S. Gl. Invs. Prec. Mnls.	19.6	ProFunds Ultra Japan Inv.	88.2
LAGGARDS		LAGGARDS	
ProFds. Sh. Oil & Gas Inv.	-11.7	Ameritor Investment	-63.2
ProFds. USh. Sm. Cap Inv.	-11.1	American Heritage Grth.	-42.9
Potomac Sm. Cap/Sh. Inv.	-11.0	ProFds. USh. Mid Cap Inv.	-32.4
Guardian UBS Sm. Cap Val. A	-9.1	ProFds. USh. Sm. Cap Inv.	-30.6

INTEREST RATES

KEY RATES

	JAN. 25	WEEK AGO	YEAR AGO
Money Market Funds	3.88%	3.85%	1.85%
90-Day Treasury Bills	4.42	4.35	2.41
2-Year Treasury Notes	4.46	4.33	3.21
10-Year Treasury Notes	4.48	4.33	4.19
30-Year Treasury Bonds	4.66	4.51	4.68
30-Year Fixed Mortgage †	5.90	5.96	5.63

†BanxQuote, Inc.

BLOOMBERG MUNI YIELD EQUIVALENTS

Taxable equivalent yields on AAA-rated, tax-exempt municipal bonds, assuming a 30% federal tax rate.

	10-YR. BOND	30-YR. BOND
General Obligations	3.78%	4.35%
Taxable Equivalent	5.40	6.21
Insured Revenue Bonds	3.84	4.44
Taxable Equivalent	5.49	6.34

THE WEEK AHEAD

PERSONAL INCOME Monday, Jan. 30, 8:30 a.m. EST » In December, income probably rose 0.4%, after November's 0.3% gain. That's the median forecast of economists polled by Action Economics. Consumer spending most likely grew 0.5%.

EMPLOYMENT COST INDEX Tuesday, Jan. 31, 8:30 a.m., EST » Compensation is forecast to have increased 0.9% in the final quarter of 2005.

FOMC MEETING Tuesday, Jan. 31, 9 a.m. EST » The Federal Reserve's Open Market Committee meets to set monetary policy. The unanimous expectation is that the central bank will raise the fed funds rate from 4.25% to 4.50%.

PURCHASING MANAGERS' INDEX Wednesday, Feb. 1, 10 a.m. EST » The Institute for Supply Management's January factory activity index most likely edged up to 55%, from 54.2% in December.

PRODUCTIVITY & COSTS Thursday, Feb. 2, 8:30 a.m. EST » Output per hour worked probably grew at a 2% annualized rate in the fourth quarter, after a 4.7% rise in the prior period. Unit labor costs very likely grew by 2.8%.

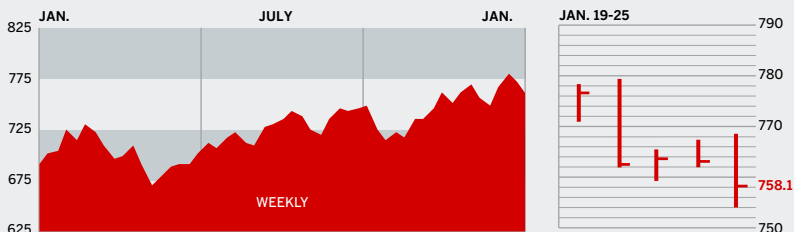
EMPLOYMENT Friday, Feb. 3, 8:30 a.m. EST » January nonfarm payrolls probably grew by 225,000 positions after a gain of 108,000 in December. The jobless rate most likely held at 4.9%.

The BusinessWeek production index rose to 271.7 for the week ended Jan. 14, and stood 12.9% above the year-ago level. Before calculation of the four-week moving average, the index rose to 269.4.

BusinessWeek online

For the BW50, more investment data, and the components of the production index visit www.businessweek.com/magazine/extra.htm

THE BUSINESSWEEK FIFTY



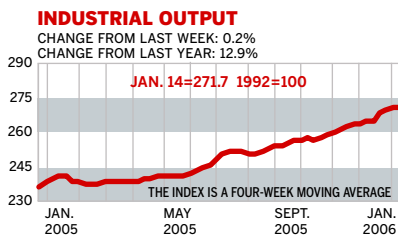
The BW50 lagged the broader indexes. Investors in Apple Computer, down 10%, took some money off the table, though the stock is still up 65.4% since March, 2005. J&J fell to a 52-week low, despite a 79% increase in fourth-quarter earnings; it was punished for a fall in revenues and for losing the Guidant takeover battle to Boston Scientific. Steelmakers Nucor and U.S. Steel rose sharply.

COMPANY PERFORMANCE

RANK	COMPANY	% CHANGE		RANK	COMPANY	% CHANGE	
		WEEK	SINCE 3/1/05			WEEK	SINCE 3/1/05
1	Nucor	13.0	24.1	26	Carnival	-1.4	-2.6
2	ConocoPhillips	0.2	14.6	27	Adobe Systems	-1.9	26.2
3	ChevronTexaco	0.6	-1.3	28	Cummins	-2.4	28.1
4	Valero Energy	-1.2	63.9	29	Boston Scientific	-1.6	-27.9
5	UnitedHealth Group	-5.0	27.2	30	EOG Resources	0.9	78.3
6	Occidental Petroleum	-0.7	27.1	31	Symantec	-10.2	-21.3
7	Exxon Mobil	-0.8	-4.9	32	Starbucks	-2.5	17.2
8	Yahoo	-2.0	6.9	33	Electronic Arts	-3.6	-14.8
9	Apache	-2.0	12.4	34	WellPoint	-5.1	19.4
10	Devon Energy	-1.3	39.0	35	Deere	1.6	0.6
11	Pulte Homes	-5.3	0.7	36	United States Steel	7.6	-11.9
12	Qualcomm	-0.4	32.0	37	Zimmer Holdings	-6.0	-21.9
13	Apple Computer	-10.0	65.4	38	FedEx	0.2	3.1
14	Dell	-1.7	-26.5	39	Chubb	-2.3	20.1
15	Paccar	0.5	-5.5	40	XTO Energy	4.7	39.3
16	Coach	7.7	27.2	41	Microsoft	-1.6	4.9
17	Sunoco	0.1	77.4	42	Danaher	-2.0	0.2
18	eBay	-2.2	1.4	43	Dow Chemical	2.4	-21.5
19	Burlington Resources	0.7	82.8	44	Cisco Systems	-0.9	6.6
20	Progressive	-3.5	21.9	45	Gilead Sciences	-2.1	66.0
21	Caremark Rx	-3.5	32.0	46	Nike	-0.4	-3.1
22	Caterpillar	0.3	30.6	47	Anadarko Petroleum	0.1	36.7
23	Phelps Dodge	9.1	43.5	48	Bank of America	-1.4	-4.3
24	Autodesk	-3.6	39.8	49	Eaton	0.5	-6.0
25	Johnson & Johnson	-5.9	-10.8	50	3M	-5.4	-13.0

Data: Reuters

BW PRODUCTION INDEX



The production index posted another small increase. Before calculation of the four-week moving average, the index also improved, from 268.9 to 269.4. On a seasonally adjusted basis, auto and truck assemblies were the only components to eke out increases. On the downside, lumber and coal output suffered the biggest declines. Rail-freight traffic, crude-oil refining, and steel were all modestly lower. Electric power production was nearly unchanged during the week.

Information on each of the index components is at www.businessweek.com.
BW production index Copyright 2005 by The McGraw-Hill Companies

ONLINE RESOURCES

BW50 More information about BW50 companies is available online.

BUSINESSWEEK INVESTING Real-time market coverage and investment tools in partnership with Standard & Poor's.

MUTUAL FUNDS Search for funds, view BW ratings, and read Q&As with fund managers.

COLUMNS Hot stocks, takeover plays, and the latest strategies for managing your money.

BusinessWeek online

For the BW50, more investment data, and the components of the production index visit www.businessweek.com/magazine/extra.htm