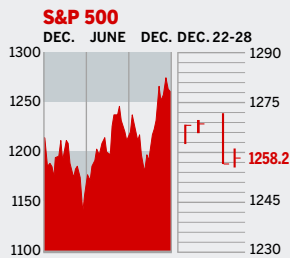


Personal Business Figures of the Week

STOCKS

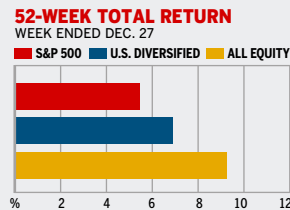
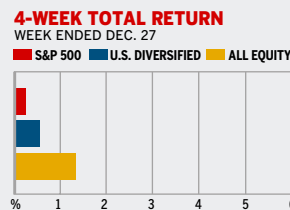


COMMENTARY

The inverting of the yield curve on Dec. 27 momentarily raised up ghosts of recessions past, as economic downturns have often been preceded by inversions. Stocks took a dive on fears of a slowdown but steadied the next day on news of a rise in consumer sentiment and on signals from retailing giant Wal-Mart that holiday shopping had been fairly brisk.

Data: Bloomberg Financial Markets, Reuters

MUTUAL FUNDS



Data: Standard & Poor's

U.S. MARKETS

	DEC. 28	WEEK	% CHANGE YEAR TO DATE	LAST 12 MONTHS
S&P 500	1258.2	-0.4	3.8	3.7
Dow Jones Industrials	10,796.3	-0.3	0.1	-0.5
NASDAQ Composite	2228.9	-0.1	2.5	2.4
S&P MidCap 400	744.1	0.4	12.2	12.3
S&P SmallCap 600	354.1	-0.1	7.7	7.4
DJ Wilshire 5000	12,591.2	-0.3	5.4	5.3

SECTORS

	DEC. 27	WEEK AGO	YEAR AGO	LAST 12 MONTHS
BusinessWeek 50*	747.5	-0.8	6.1	6.0
BW Info Tech 100**	384.1	0.0	2.9	3.2
S&P/BARRA Growth	602.1	-0.4	3.4	3.2
S&P/BARRA Value	651.8	-0.3	4.2	4.2
S&P Energy	374.1	-1.9	29.6	30.3
S&P Financials	428.8	-0.3	4.3	4.2
S&P REIT	154.8	0.2	7.1	7.4
S&P Transportation	251.9	0.7	4.3	4.3
S&P Utilities	160.6	0.0	13.4	13.1
GSTI Internet	208.7	-0.3	17.0	16.1
PSE Technology	845.9	0.1	8.6	8.7

*Mar. 19, 1999=1000 **Feb. 7, 2000=1000

GLOBAL MARKETS

	DEC. 28	WEEK	% CHANGE YEAR TO DATE	LAST 12 MONTHS
S&P Euro Plus (U.S. Dollar)	1521.3	1.5	8.9	9.1
London (FT-SE 100)	5622.8	0.6	16.8	17.2
Paris (CAC 40)	4756.9	0.1	24.5	24.4
Frankfurt (DAX)	5447.2	0.9	28.0	27.8
Tokyo (NIKKEI 225)	16,194.6	1.5	41.0	41.8
Hong Kong (Hang Seng)	15,101.5	-0.8	6.1	6.4
Toronto (S&P/TSX Composite)	11,261.2	0.1	21.8	21.3
Mexico City (IPC)	17,690.7	-0.5	36.9	37.0

FUNDAMENTALS

	DEC. 27	WEEK AGO	YEAR AGO
S&P 500 Dividend Yield	1.81%	1.80%	1.94%
S&P 500 P/E Ratio (Trailing 12 mos.)	18.4	18.6	20.5
S&P 500 P/E Ratio (Next 12 mos.)*	15.1	15.1	16.9
First Call Earnings Revision*	-2.39%	-1.12%	0.10%

*First Call Corp.

TECHNICAL INDICATORS

	DEC. 27	WEEK AGO	READING
S&P 500 200-day average	1209.6	1208.4	Positive
Stocks above 200-day average	62.0%	61.0%	Neutral
Options: Put/call ratio	0.70	0.67	Positive
Insiders: Vickers NYSE Sell/buy ratio	3.82	3.82	Negative

BEST-PERFORMING GROUPS

	LAST MONTH %	LAST 12 MONTHS %
Gold Mining	12.0	81.0
Oil & Gas Refining	9.5	66.8
Oil & Gas Exploration	9.5	56.6
Divsfd. Metals & Mining	9.0	51.7
Oil & Gas Drilling	7.9	49.9
Distillers & Vintners		

WORST-PERFORMING GROUPS

	LAST MONTH %	LAST 12 MONTHS %
Educational Services	-15.1	-50.1
Automobiles	-13.4	-42.2
Home Furnishings Retrs.	-12.5	-26.7
IT Consulting	-10.3	-23.4
Automobiles	-9.6	-23.2
Computer Retailers		
Internet Retailers		
Auto Parts & Equip.		

EQUITY FUND CATEGORIES

4-WEEK TOTAL RETURN	%	52-WEEK TOTAL RETURN	%
LEADERS			
Japan	9.4	Latin America	53.3
Diversified Pacific/Asia	6.6	Natural Resources	39.6
Precious Metals	5.9	Diversified Emerg. Mkts.	34.5
Diversified Emerg. Mkts.	5.5	Japan	33.1
LAGGARDS			
Communications	-0.8	Domestic Hybrid	4.9
Financial	0.0	Miscellaneous	5.4
Large-cap Value	0.2	Large-cap Blend	5.6
Large-cap Blend	0.3	Small-cap Blend	5.9

EQUITY FUNDS

4-WEEK TOTAL RETURN	%	52-WEEK TOTAL RETURN	%
LEADERS			
Fidelity Japan Small Co.	15.7	ProFunds Ultra Japan Inv.	84.1
Glenmede International	15.4	ING Russia A	75.9
ICON Asia Region	11.5	Fidelity Advsr. Korea A	71.0
ProFunds Ultra Japan Inv.	11.5	Gartmore Gl. Ntrl. Rscs. A	63.9
LAGGARDS			
STI Sm. Cap Val. Eq. C	-18.4	American Heritage Grth.	-42.9
Bridgeway Micro Cap Ltd.	-15.7	American Heritage	-33.3
ProFds. Mble. Tlcmms. Inv.	-8.9	Frontier MicroCap	-30.8
Smith Barney Fncl. Svcs. B	-7.3	Apex Mid Cap Growth	-22.6

INTEREST RATES

KEY RATES

	DEC. 28	WEEK AGO	YEAR AGO
Money Market Funds	3.79%	3.76%	1.71%
90-Day Treasury Bills	3.95	3.99	2.26
2-Year Treasury Notes	4.36	4.44	3.07
10-Year Treasury Notes	4.38	4.49	4.29
30-Year Treasury Bonds	4.53	4.68	4.92
30-Year Fixed Mortgage †	6.11	6.17	5.69

†BanxQuote, Inc.

BLOOMBERG MUNI YIELD EQUIVALENTS

Taxable equivalent yields on AAA-rated, tax-exempt municipal bonds, assuming a 30% federal tax rate.

	10-YR. BOND	30-YR. BOND
General Obligations	3.90%	4.40%
Taxable Equivalent	5.57	6.29
Insured Revenue Bonds	3.98	4.50
Taxable Equivalent	5.69	6.43

THE WEEK AHEAD

PURCHASING MANAGERS INDEX

Tuesday, Jan. 3, 10 a.m. EST

» The Institute for Supply Management's December factory activity index is forecast to have slipped to 57.4%, from 58.1% for November. That's the median forecast of economists surveyed by Action Economics LLC.

CONSTRUCTION SPENDING

Tuesday, Jan. 3, 10 a.m. EST

» Building outlays most likely increased 0.7% for a second

straight month in November. The key number in the report will be spending on homebuilding.

VEHICLE SALES

Wednesday, Jan. 4

» December sales of light vehicles probably improved to an annual rate of 17.2 million, according to WardsAuto.com. November sales warmed up to a pace of 15.7 million vehicles.

FACTORY INVENTORIES

Wednesday, Jan. 4, 10 a.m. EST

» Manufacturing inventories

probably rose by 0.5% in November. In October, inventories grew 0.6%.

EMPLOYMENT

Friday, Jan. 6, 8:30 a.m. EST

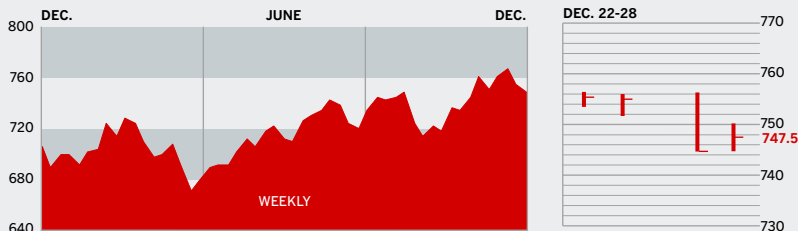
» Monthly nonfarm payrolls probably grew by 200,000 in December after posting an increase of 215,000 in November. Factory payrolls are expected to have expanded a third straight month, adding 5,000 jobs. Even so, the jobless rate most likely remained at 5%.

The *BusinessWeek* production index improved to 265.7 for the week ended Dec. 17, a 13.3% increase from a year ago. Before calculation of the four-week moving average, the index rebounded to 267, from 264.7.

BusinessWeek online

For the BW50, more investment data, and the components of the production index visit www.businessweek.com/magazine/extra.htm

THE BUSINESSWEEK FIFTY



The BW50 fell 0.8% for the week, lagging the broader indexes. Energy stocks, which dominate the list, fell as traders sold shares in anticipation of a fall in fuel prices. That looked like a smart bet on Dec. 27 as natural gas prices plummeted in the face of mild weather across the U.S. Another casualty of sector rotation was Pulte Homes, off 3.9%, as traders pulled out of housing stocks.

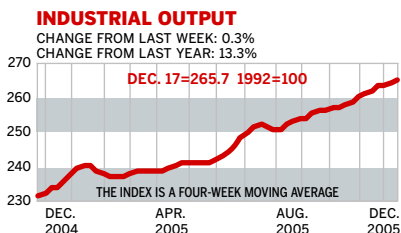
COMPANY PERFORMANCE

RANK	COMPANY	% CHANGE	
		WEEK	SINCE 3/1/05
1	Nucor	-1.0	7.8
2	ConocoPhillips	-1.8	5.1
3	ChevronTexaco	-0.6	-8.7
4	Valero Energy	-2.0	45.6
5	UnitedHealth Group	-0.5	39.2
6	Occidental Petroleum	-3.2	14.7
7	Exxon Mobil	-2.3	-11.2
8	Yahoo	-0.5	24.7
9	Apache	-3.6	8.8
10	Devon Energy	-2.4	34.5
11	Pulte Homes	-3.9	2.3
12	Qualcomm	-0.8	21.1
13	Apple Computer	0.1	64.0
14	Dell	-1.0	-23.6
15	Paccar	0.4	-7.0
16	Coach	-0.9	21.2
17	Sunoco	-1.5	60.3
18	eBay	0.2	3.6
19	Burlington Resources	-0.5	73.6
20	Progressive	-0.3	36.1
21	Caremark Rx	-0.3	35.8
22	Caterpillar	1.3	21.7
23	Phelps Dodge	1.4	38.7
24	Autodesk	-1.3	48.7
25	Johnson & Johnson	-0.8	-7.9

RANK	COMPANY	% CHANGE	
		WEEK	SINCE 3/1/05
26	Carnival	-0.6	-1.8
27	Adobe Systems	-1.5	19.4
28	Cummins	3.6	24.8
29	Boston Scientific	-2.2	-24.1
30	EOG Resources	-3.4	63.0
31	Symantec	3.2	-21.4
32	Starbucks	0.1	18.0
33	Electronic Arts	-1.7	-18.5
34	WellPoint	2.4	29.1
35	Deere	-1.1	-3.0
36	United States Steel	3.4	-22.9
37	Zimmer Holdings	-1.1	-20.2
38	FedEx	0.5	6.6
39	Chubb	2.8	23.8
40	XTO Energy	-4.8	30.3
41	Microsoft	-1.3	4.9
42	Danaher	-0.1	2.4
43	Dow Chemical	1.1	-19.8
44	Cisco Systems	0.5	-0.7
45	Gilead Sciences	-1.2	54.7
46	Nike	2.2	0.7
47	Anadarko Petroleum	-2.3	22.4
48	Bank of America	-0.8	-0.8
49	Eaton	-0.2	-3.6
50	3M	0.2	-6.8

Data: Reuters

BW PRODUCTION INDEX



The production index continued its upward climb. Before calculation of the four-week moving average, the index jumped to 267, after slipping to 264.7 in the previous week. On a seasonally adjusted basis, auto and truck assemblies mounted strong gains, followed by modest increases in the rail-freight traffic, coal, and crude oil refining components. Steel output suffered a moderate decline, with electric power production also lower. Lumber was nearly unchanged for the week.

Information on each of the index components is at www.businessweek.com.
BW production index Copyright 2005 by The McGraw-Hill Companies

ONLINE RESOURCES

BW50 More information about BW50 companies is available online.

BUSINESSWEEK INVESTING Real-time market coverage and investment tools in partnership with Standard & Poor's.

MUTUAL FUNDS Search for funds, view BW ratings, and read Q&As with fund managers.

COLUMNS Hot stocks, takeover plays, and the latest strategies for managing your money.

BusinessWeek online

For the BW50, more investment data, and the components of the production index visit www.businessweek.com/magazine/extra.htm