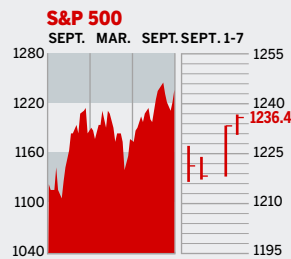


Personal Business Figures of the Week

STOCKS



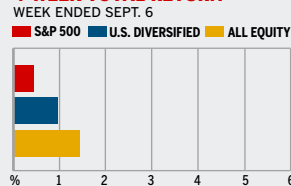
COMMENTARY

As the floodwaters in New Orleans began to recede and oil sank below \$65 a barrel, investors focused on the positives and sent stocks higher. Still, the economy continued to emit worrisome signals. Labor costs rose in the second quarter, while productivity lagged behind. Bonds fell as comments by Chicago Fed President Moskowitz suggested further rate hikes.

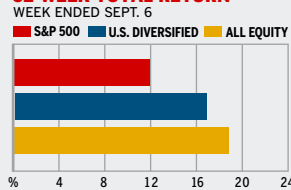
Data: Bloomberg Financial Markets, Reuters

MUTUAL FUNDS

4-WEEK TOTAL RETURN



52-WEEK TOTAL RETURN



Data: Standard & Poor's

U.S. MARKETS

	SEPT. 7	WEEK	% CHANGE YEAR TO DATE	LAST 12 MONTHS
S&P 500	1236.4	1.3	2.0	10.3
Dow Jones Industrials	10,633.5	1.4	-1.4	2.8
NASDAQ Composite	2172.0	0.9	-0.2	16.9
S&P MidCap 400	718.4	1.0	8.3	22.1
S&P SmallCap 600	351.9	1.3	7.0	23.1
DJ Wilshire 5000	12,360.7	1.3	3.4	13.3

*Mar. 19, 1999=1000 **Feb. 7, 2000=1000

BEST-PERFORMING GROUPS

Group	LAST MONTH %	Group	LAST 12 MONTHS %
Oil & Gas Refining	24.1	Oil & Gas Refining	137.3
Instrumentation	20.8	Fertilizers & Ag. Chems.	76.7
Agricultural Products	11.6	Oil & Gas Exploration	75.9
Oil & Gas Exploration	8.0	Managed Health Care	71.7
Educational Services	6.7	Oil & Gas Drilling	69.5

EQUITY FUND CATEGORIES

Category	4-WEEK TOTAL RETURN %	Category	52-WEEK TOTAL RETURN %
LEADERS		LEADERS	
Japan	9.7	Latin America	72.6
Real Estate	5.1	Natural Resources	54.4
Latin America	4.9	Diversified Emerg. Mkts.	42.9
Utilities	4.8	Europe	34.1
LAGGARDS		LAGGARDS	
Pacific/Asia ex-Japan	-0.3	Financial	8.9
Miscellaneous	0.4	Domestic Hybrid	10.4
Large-cap Growth	0.4	Large-cap Blend	12.3
Large-cap Blend	0.5	Miscellaneous	13.5

EQUITY FUNDS

Fund	4-WEEK TOTAL RETURN %	Fund	52-WEEK TOTAL RETURN %
LEADERS		LEADERS	
Strateg. Ptnrs. Sm. Cp. VI. A	14.4	Guinness Atkn. Gl. Energy	88.8
ProFunds Ultra Japan Inv.	12.6	U.S. Gbl. Invs. Gl. Rscs.	80.5
Scudder Japanese Eq. S	11.9	T. Rowe Price Lat. Am.	79.5
Rydex Large Cap Japan	11.7	ProFunds Oil & Gas Inv.	78.1
LAGGARDS		LAGGARDS	
iShares MSCI Taiwan Idx.	-5.7	Ameritor Investment	-56.0
ProFunds Bsc. Mtrls. Inv.	-5.5	ProFds. USh. Mid Cap Inv.	-33.3
Frontier MicroCap	-4.5	ProFds. USh. Sm. Cap Inv.	-33.3
Potomac Sm. Cap/Sh. Inv.	-4.2	Rydex Dyn. Vent. 100 H	-26.1

GLOBAL MARKETS

	SEPT. 7	WEEK	% CHANGE YEAR TO DATE	LAST 12 MONTHS
S&P Euro Plus (U.S. Dollar)	1468.2	3.3	5.1	26.7
London (FT-SE 100)	5365.9	1.3	11.5	17.5
Paris (CAC 40)	4486.2	2.0	17.4	21.8
Frankfurt (DAX)	4988.1	3.3	17.2	28.3
Tokyo (NIKKEI 225)	12,607.6	1.6	9.7	11.6
Hong Kong (Hang Seng)	15,224.6	2.2	7.0	15.9
Toronto (S&P/TSX Composite)	10,810.1	1.3	16.9	29.2
Mexico City (IPC)	15,246.2	7.0	18.0	45.4

FUNDAMENTALS

	SEPT. 6	WEEK AGO	YEAR AGO
S&P 500 Dividend Yield	2.02%	2.05%	1.70%
S&P 500 P/E Ratio (Trailing 12 mos.)	19.3	18.9	19.9
S&P 500 P/E Ratio (Next 12 mos.)*	15.4	15.1	16.3
First Call Earnings Revision*	0.80%	0.47%	-0.04%

*First Call Corp.

TECHNICAL INDICATORS

	SEPT. 6	WEEK AGO	READING
S&P 500 200-day average	1196.3	1095.4	Positive
Stocks above 200-day average	67.0%	59.0%	Neutral
Options: Put/call ratio	0.83	0.87	Positive
Insiders: Vickers NYSE Sell/buy ratio	5.09	5.18	Negative

WORST-PERFORMING GROUPS

Group	LAST MONTH %	Group	LAST 12 MONTHS %
Footwear	-8.0	IT Consulting	-34.1
Specialty Appr. Retailers	-8.0	Automobiles	-27.1
Tires & Rubber	-7.8	Insurance Brokers	-24.5
Internet Retailers	-6.6	Motorcycles	-21.7
Hypermkts. & Suprcntrs.	-6.3	Aluminum	-19.7

INTEREST RATES

KEY RATES

	SEPT. 7	WEEK AGO	YEAR AGO
Money Market Funds	3.07%	3.04%	1.04%
90-Day Treasury Bills	3.49	3.50	1.62
2-Year Treasury Notes	3.83	3.82	2.55
10-Year Treasury Notes	4.14	4.02	4.24
30-Year Treasury Bonds	4.42	4.26	5.01
30-Year Fixed Mortgage †	5.65	5.71	5.71

†BarxQuote, Inc.

BLOOMBERG MUNI YIELD EQUIVALENTS

Taxable equivalent yields on AAA-rated, tax-exempt municipal bonds, assuming a 30% federal tax rate.

	10-YR. BOND	30-YR. BOND
General Obligations	3.56%	4.30%
Taxable Equivalent	5.09	6.14
Insured Revenue Bonds	3.74	4.38
Taxable Equivalent	5.34	6.26

THE WEEK AHEAD

PRODUCER PRICE INDEX

Tuesday, Sept. 13, 8:30 a.m. EDT » August producer prices probably increased 0.7%, after a 1% jump in July. That's the median estimate of economists surveyed by Action Economics. Less food and energy, prices are expected to have risen 0.2%, after a 0.4% gain.

INTERNATIONAL TRADE

Tuesday, Sept. 13, 8:30 a.m. EDT » The foreign trade deficit most likely widened to \$60 billion

in July. The June trade gap expanded to \$58.8 billion.

RETAIL SALES

Wednesday, Sept. 14, 8:30 a.m. EDT » Retail sales probably fell 0.2% in August. Vehicle discounting led to big gains in June and July. Excluding vehicles, retail sales very likely grew by 0.5%, following a 0.3% rise in July.

INDUSTRIAL PRODUCTION

Wednesday, Sept. 14, 9:15 a.m. EDT » August industrial

output probably grew 0.2%, after expanding 0.4% during July. The average monthly operating rate probably ticked up to 79.8%, after edging down to 79.7% for July.

CONSUMER PRICE INDEX

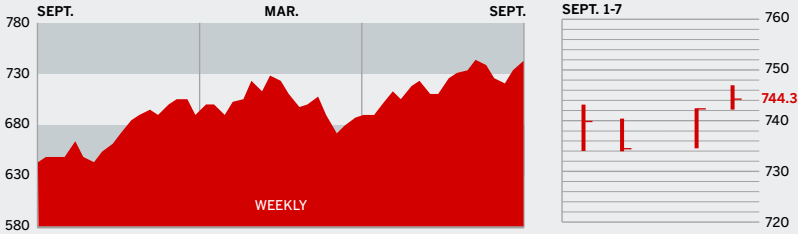
Thursday, Sept. 15, 8:30 a.m. EDT » Consumer prices for goods and services are expected to have climbed 0.5% for a second straight month. Excluding food and energy, consumer prices probably rose 0.2%, after a 0.1% rise in July.

The *BusinessWeek* production index rose to 253.2 for the week ended Aug. 27 and stood 12.1% higher than a year ago. Before calculation of the four-week moving average, the index grew to 254.5.

BusinessWeek online

For the BW50, more investment data, and the components of the production index visit www.businessweek.com/magazine/extra.htm

THE BUSINESSWEEK FIFTY



The effects of Hurricane Katrina buoyed the BW 50, sending shares higher. Oil-refiners Sunoco, up 6.3%, and Valero Energy, up 4.3%, climbed, thanks to the surge in gas prices. U.S. Steel also benefited as the hurricane cut supplies of steel. Apache, though, was hurt because its oil and gas facilities were hit by the storm. Caterpillar rose 6.5%, citing strong demand.

COMPANY PERFORMANCE

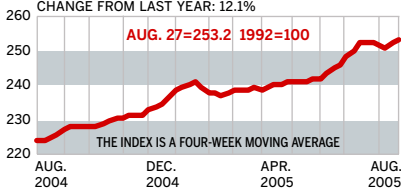
RANK	COMPANY	% CHANGE		RANK	COMPANY	% CHANGE	
		WEEK	SINCE 3/1/05			WEEK	SINCE 3/1/05
1	Nucor	3.7	-6.1	26	Johnson & Johnson	2.2	-1.2
2	ConocoPhillips	1.1	20.3	27	Carnival	1.1	-8.3
3	ChevronTexaco	1.6	0.5	28	Adobe Systems	0.6	-11.9
4	Valero Energy	4.3	55.9	29	Cummins	3.6	22.0
5	UnitedHealth Group	3.8	17.3	30	Boston Scientific	-9.7	-25.7
6	Occidental Petroleum	1.0	19.4	31	EOG Resources	4.0	45.7
7	Exxon Mobil	2.6	-2.9	32	Symantec	4.4	-0.5
8	Yahoo	2.2	5.5	33	Starbucks	-1.6	-6.8
9	Nextel Communications	0.0	13.2	34	Electronic Arts	-1.3	-12.3
10	Apache	-2.2	11.4	35	WellPoint	3.4	25.8
11	Devon Energy	2.5	33.2	36	Deere	0.7	-7.4
12	Pulte Homes	3.0	13.8	37	United States Steel	6.7	-28.3
13	Qualcomm	2.2	12.6	38	Zimmer Holdings	1.1	-3.3
14	Apple Computer	3.8	8.5	39	FedEx	-0.4	-17.0
15	Dell	-1.3	-12.4	40	Chubb	0.3	10.2
16	Paccar	2.2	-4.8	41	XTO Energy	-0.2	16.3
17	Coach	0.3	19.8	42	Microsoft	-1.9	6.7
18	Sunoco	6.3	55.9	43	Danaher	1.7	0.6
19	eBay	-0.1	-5.6	44	Dow Chemical	3.2	-19.1
20	Burlington Resources	1.2	50.5	45	Cisco Systems	4.4	5.6
21	Progressive	1.5	12.4	46	Gilead Sciences	0.7	25.3
22	Caremark Rx	4.1	27.1	47	Nike	-2.3	-11.4
23	Caterpillar	6.5	24.3	48	Anadarko Petroleum	2.2	20.8
24	Phelps Dodge	1.3	2.4	49	Bank of America	0.7	-7.2
25	Autodesk	1.5	47.5	50	Eaton	2.5	21.1

Data: Reuters

BW PRODUCTION INDEX

INDUSTRIAL OUTPUT

CHANGE FROM LAST WEEK: 0.3%
CHANGE FROM LAST YEAR: 12.1%



The production index eked out another increase. Before calculation of the four-week moving average, the index nudged up to 254.5, from 254.1. On a seasonally adjusted basis, only two components posted gains: truck assemblies and crude-oil refining. Coal output was off modestly, and rail-freight traffic was down due in large part to a decline in carloads of coal during the period. Autos suffered the biggest decline, with electric-power production, lumber, and steel also lower.

Information on each of the index components is at www.businessweek.com.
BW production index Copyright 2005 by The McGraw-Hill Companies

ONLINE RESOURCES

BW50 More information about BW50 companies is available online.

BUSINESSWEEK INVESTING Real-time market coverage and investment tools in partnership with Standard & Poor's.

MUTUAL FUNDS Search for funds, view BW ratings, and read Q&As with fund managers.

COLUMNS Hot stocks, takeover plays, and the latest strategies for managing your money.

BusinessWeek online

For the BW50, more investment data, and the components of the production index visit www.businessweek.com/magazine/extra.htm