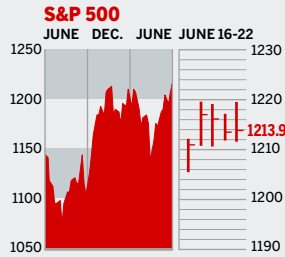


STOCKS



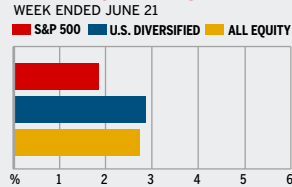
COMMENTARY

The markets treaded water this week, with no appreciable gains in either the Dow or NASDAQ. Oposing economic forces were to blame: Low interest rates and continued strength in housing are offsetting higher oil prices. Still, some worry that a sell-off may be nigh: The S&P is trading at 18 times estimated operating earnings, above its long-term average of 15.

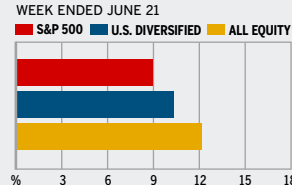
Data: Bloomberg Financial Markets, Reuters

MUTUAL FUNDS

4-WEEK TOTAL RETURN



52-WEEK TOTAL RETURN



Data: Standard & Poor's

U.S. MARKETS

	JUNE 22	WEEK	% CHANGE YEAR TO DATE	LAST 12 MONTHS
S&P 500	1213.9	0.6	0.2	7.0
Dow Jones Industrials	10,587.9	0.2	-1.8	1.9
NASDAQ Composite	2092.0	0.8	-3.8	4.9
S&P MidCap 400	689.5	0.5	4.0	15.6
S&P SmallCap 600	335.1	0.5	1.9	16.6
DJ Wilshire 5000	12,042.4	0.7	0.8	9.1

SECTORS

	JUNE 22	WEEK	% CHANGE YEAR TO DATE	LAST 12 MONTHS
BusinessWeek 50*	721.6	0.6	2.4	10.6
BW Info Tech 100**	360.0	1.2	-3.5	5.5
S&P/BARRA Growth	580.3	0.1	-0.3	2.7
S&P/BARRA Value	629.4	1.1	0.6	11.3
S&P Energy	350.7	1.5	21.5	40.0
S&P Financials	399.0	1.0	-2.9	3.9
S&P REIT	149.8	-0.1	3.7	25.9
S&P Transportation	213.2	0.7	-11.7	6.2
S&P Utilities	158.5	2.1	12.0	32.0
GSTI Internet	166.4	-0.1	-6.7	4.3
PSE Technology	760.8	0.5	-2.3	7.4

*Mar. 19, 1999=1000 **Feb. 7, 2000=1000

GLOBAL MARKETS

	JUNE 22	WEEK	% CHANGE YEAR TO DATE	LAST 12 MONTHS
S&P Euro Plus (U.S. Dollar)	1351.8	1.1	-3.2	15.7
London (FT-SE 100)	5099.3	1.6	5.9	14.1
Paris (CAC 40)	4229.6	1.1	10.7	14.3
Frankfurt (DAX)	4619.6	1.6	8.5	17.6
Tokyo (NIKKEI 225)	11,547.3	1.2	0.5	-0.3
Hong Kong (Hang Seng)	14,161.0	1.8	-0.5	19.5
Toronto (S&P/TSX Composite)	10,051.5	1.9	8.7	18.0
Mexico City (IPC)	13,441.7	-0.4	4.1	32.6

FUNDAMENTALS

	JUNE 21	WEEK AGO	YEAR AGO
S&P 500 Dividend Yield	2.01%	2.05%	1.63%
S&P 500 P/E Ratio (Trailing 12 mos.)	19.9	19.7	21.1
S&P 500 P/E Ratio (Next 12 mos.)*	15.9	15.8	16.9
First Call Earnings Revision*	-0.2%	-0.53%	1.22%

*First Call Corp.

TECHNICAL INDICATORS

	JUNE 21	WEEK AGO	READING
S&P 500 200-day average	1172.5	1169.9	Positive
Stocks above 200-day average	65.0%	63.0%	Neutral
Options: Put/call ratio	0.76	0.69	Positive
Insiders: Vickers NYSE Sell/buy ratio	3.67	3.33	Negative

BEST-PERFORMING GROUPS

	LAST MONTH %	LAST 12 MONTHS %
Oil & Gas Drilling	18.7	Fertilizers & Ag. Chems. 90.6
Oil & Gas Refining	18.6	Oil & Gas Refining 74.4
Specized. Consmr. Serv.	17.3	Managed Health Care 70.3
Fertilizers & Ag. Chems.	17.0	Homebuilding 69.3
Computer Retailers	16.8	Oil & Gas Drilling 66.3

WORST-PERFORMING GROUPS

	LAST MONTH %	LAST 12 MONTHS %
IT Consulting	-6.4	IT Consulting -53.8
Personal Products	-5.2	Automobiles -30.2
Air Freight & Couriers	-4.8	Insurance Brokers -29.4
Insurance Brokers	-4.5	Auto Parts & Equip. -20.9
Office Svcs. & Supplies	-4.0	Multi-line Insurers -16.6

EQUITY FUND CATEGORIES

4-WEEK TOTAL RETURN	%	52-WEEK TOTAL RETURN	%
LEADERS			
Precious Metals	10.7	Latin America	63.1
Natural Resources	10.3	Natural Resources	38.6
Latin America	7.5	Diversified Emerg. Mkts.	35.8
Utilities	4.8	Real Estate	33.2
LAGGARDS			
Health	1.3	Japan	0.0
Domestic Hybrid	1.5	Technology	2.2
Technology	1.7	Large-cap Growth	6.4
Large-cap Growth	1.8	Health	7.2

EQUITY FUNDS

4-WEEK TOTAL RETURN	%	52-WEEK TOTAL RETURN	%
LEADERS			
ProFunds Oil & Gas Inv.	16.0	iShares MSCI Brazil Idx.	81.7
PrFds. Mble. Tlcms. Inv.	14.9	Merrill Lynch Lat. Am. B	66.7
Guinness Atkn. Gl. Energy	14.8	T. Rowe Price Lat. Am.	66.7
ProFunds Precs. Mtls. Inv.	14.6	iShares S&P L. Am. 40 Idx.	65.2
LAGGARDS			
Van Wagoner Post Vent.	-12.7	Ameritor Investment	-57.1
Van Wagoner Technology	-12.2	ProFds. USh. Mid Cap Inv.	-27.8
Potomac Sm. Cap/Sh. Inv.	-8.9	ProFds. USh. Sm. Cap Inv.	-25.3
ProFds. USh. Sm. Cap Inv.	-8.5	Van Wagoner Emerg. Gr.	-22.0

INTEREST RATES

KEY RATES

	JUNE 22	WEEK AGO	YEAR AGO
Money Market Funds	2.63%	2.61%	0.66%
90-Day Treasury Bills	3.03	2.99	1.28
2-Year Treasury Notes	3.61	3.71	2.73
10-Year Treasury Notes	3.94	4.11	4.70
30-Year Treasury Bonds	4.24	4.40	5.38
30-Year Fixed Mortgage †	5.52	5.54	6.22

†BanxQuote, Inc.

BLOOMBERG MUNI YIELD EQUIVALENTS

Taxable equivalent yields on AAA-rated, tax-exempt municipal bonds, assuming a 30% federal tax rate.

	10-YR. BOND	30-YR. BOND
General Obligations	3.60%	4.30%
Taxable Equivalent	5.14	6.14
Insured Revenue Bonds	3.73	4.43
Taxable Equivalent	5.33	6.33

THE WEEK AHEAD

CONSUMER CONFIDENCE

Tuesday, June 28, 10 a.m. EDT » The Conference Board's June consumer confidence index probably edged up to 103, after a May jump to 102.2. That's the median estimate of economists surveyed by Action Economics.

FOMC MEETING

Wednesday, June 29, 9 a.m. EDT » The Federal Reserve's Open Market Committee begins its two-day meeting to set monetary policy.

Economists polled by Action Economics expect a quarter-point interest-rate hike, to 3.25%.

PERSONAL INCOME

Thursday, June 30, 8:30 a.m. EDT » Personal income most likely grew by 0.3% in May, after a 0.7% jump in April. Consumer expenditures probably inched up 0.1%, as vehicle sales slipped. Consumer spending rose 0.6% in April.

PURCHASING MANAGERS' INDEX

Friday, July 1, 10 a.m. EDT »

The Institute for Supply Management's manufacturing activity index probably held about steady at 51.5% in June. The index retreated to 51.4% in May as the orders index declined.

CONSTRUCTION SPENDING

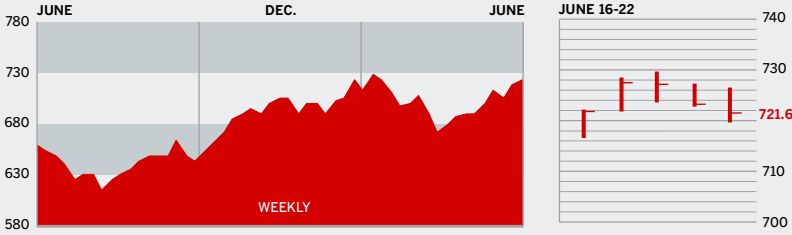
Friday, July 1, 10 a.m. EDT » May building outlays are forecast to have improved by 0.4%, after a 0.5% gain in April. The hot housing market accounts for over 55% of overall construction spending.

The *BusinessWeek* production index climbed to 243.3 for the week ended June 11, an 11.4% increase from the previous year. Before calculation of the four-week moving average, the index jumped to 246.7.

BusinessWeek online

For the BW50, more investment data, and the components of the production index visit www.businessweek.com/magazine/extra.htm

THE BUSINESSWEEK FIFTY



The BW50 kept pace with the markets, up only 0.6% for the week ended June 22. The best performers by far were energy companies: Unocal spiked 7.1%, while Valero Energy rose 6%. ChevronTexaco, ConocoPhillips, and ExxonMobil were also winners. Forecasts for weak steel prices continued to weigh on the stocks of producers, including Nucor and U.S. Steel.

COMPANY PERFORMANCE

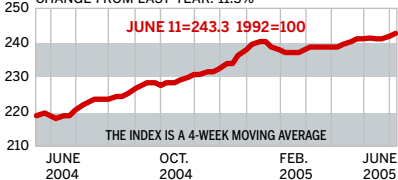
RANK	COMPANY	% CHANGE		RANK	COMPANY	% CHANGE	
		WEEK	SINCE 3/1/05			WEEK	SINCE 3/1/05
1	Nucor	-5.9	-19.8	26	Johnson & Johnson	-0.5	0.6
2	ConocoPhillips	1.9	5.3	27	Carnival	6.0	1.4
3	ChevronTexaco	2.5	-6.1	28	Adobe Systems	-4.5	-1.0
4	Valero Energy	6.0	12.9	29	Cummins	5.1	2.0
5	UnitedHealth Group	-0.4	12.7	30	Boston Scientific	-2.1	-13.4
6	Occidental Petroleum	0.7	12.2	31	EOG Resources	2.3	24.8
7	Exxon Mobil	0.7	-5.7	32	Symantec	4.2	1.7
8	Yahoo	1.6	14.3	33	Starbucks	-2.4	4.2
9	Nextel Communications	0.4	9.7	34	Electronic Arts	-1.5	-9.8
10	Apache	2.8	4.9	35	WellPoint	1.1	14.7
11	Devon Energy	2.0	6.0	36	Deere	1.3	-5.8
12	Pulte Homes	3.3	7.5	37	United States Steel	-7.6	-39.7
13	Qualcomm	0.1	-3.2	38	Zimmer Holdings	-3.3	-11.2
14	Apple Computer	3.8	-14.1	39	FedEx	2.1	-9.9
15	Dell	-0.5	0.9	40	Chubb	0.4	7.8
16	Paccar	-0.4	-5.2	41	XTO Energy	0.8	-2.9
17	Coach	0.4	20.8	42	Microsoft	-0.8	-0.4
18	Sunoco	1.6	15.4	43	Danaher	0.1	-0.1
19	eBay	-2.5	-15.1	44	Unocal	7.1	19.9
20	Burlington Resources	1.4	12.2	45	Dow Chemical	-3.5	-17.7
21	Progressive	1.1	15.4	46	Cisco Systems	2.5	13.7
22	Caremark Rx	2.3	15.4	47	Gilead Sciences	-2.0	23.4
23	Caterpillar	2.0	5.8	48	Nike	2.0	2.8
24	Phelps Dodge	-0.4	-11.6	49	Anadarko Petroleum	2.9	7.7
25	Autodesk	-2.7	20.5	50	Bank of America	1.0	0.9

Data: Reuters

BW PRODUCTION INDEX

INDUSTRIAL OUTPUT

CHANGE FROM LAST WEEK: 0.5%
CHANGE FROM LAST YEAR: 11.3%



The production index charged ahead during the latest period. Before calculation of the four-week moving average, the index jumped to 246.7, from 242.8. On a seasonally adjusted basis, electric-power production surged. Unseasonably hot weather across the Midwest and Northeast helped drive up demand for electricity. Auto and truck assemblies, crude-oil refining, and rail-freight traffic were also higher. Only lumber and steel output posted declines.

Information on each of the index components is at www.businessweek.com.
BW production index Copyright 2005 by The McGraw-Hill Companies

ONLINE RESOURCES

BW50 Track the index and the companies in it all day long. Plus: our exclusive Info Tech 100 index.

BUSINESSWEEK INVESTING Real-time market coverage and investment tools in partnership with Standard & Poor's.

MUTUAL FUNDS Search for funds, view BW ratings, and read Q&As with fund managers.

COLUMNS Hot stocks, takeover plays, and the latest strategies for managing your money.

BusinessWeek online

For the BW50, more investment data, and the components of the production index visit www.businessweek.com/magazine/extra.htm