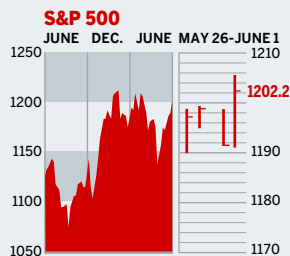


Figures of the Week

STOCKS

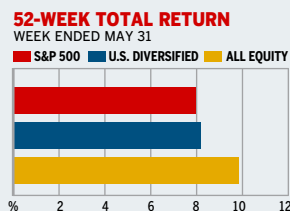
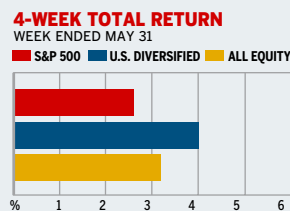


COMMENTARY

Stocks rose in three of four trading sessions, thanks to falling yields on Treasuries. The 10-year note dipped to 3.89% on June 1, as Fed officials engineered a 180-degree reversal, suggesting that the Fed might be in the "eighth inning" of rate tightening. Investors took this for a sign that happy hour had begun and bid up share prices. Once again, the tech-laden NASDAQ led the pack.

Data: Bloomberg Financial Markets, Reuters

MUTUAL FUNDS



Data: Standard & Poor's

U.S. MARKETS

	JUNE 1	WEEK	% CHANGE YEAR TO DATE	% CHANGE LAST 12 MONTHS
S&P 500	1202.2	1.0	-0.8	7.2
Dow Jones Industrials	10,549.9	0.9	-2.2	3.4
NASDAQ Composite	2087.9	1.8	-4.0	4.9
S&P MidCap 400	675.5	2.1	1.8	13.2
S&P SmallCap 600	326.5	2.8	-0.7	15.5
DJ Wilshire 5000	11,884.7	1.3	-0.6	8.6

SECTORS

	JUNE 1	WEEK	% CHANGE YEAR TO DATE	% CHANGE LAST 12 MONTHS
BusinessWeek 50*	711.9	1.7	1.0	9.9
BW Info Tech 100**	359.3	1.3	-3.7	5.9
S&P/BARRA Growth	581.3	0.9	-0.1	4.0
S&P/BARRA Value	616.4	1.2	-1.5	10.5
S&P Energy	330.2	3.2	14.4	36.6
S&P Financials	395.1	1.4	-3.9	3.4
S&P REIT	145.4	2.3	0.6	26.3
S&P Transportation	219.4	0.0	-9.1	13.1
S&P Utilities	153.4	1.9	8.4	29.3
GSTI Internet	169.0	3.0	-5.2	4.4
PSE Technology	760.0	1.6	-2.5	6.4

*Mar. 19, 1999=1000 **Feb. 7, 2000=1000

GLOBAL MARKETS

	JUNE 1	WEEK	% CHANGE YEAR TO DATE	% CHANGE LAST 12 MONTHS
S&P Euro Plus (U.S. Dollar)	1341.4	-0.7	-4.0	-15.2
London (FT-SE 100)	5011.0	0.8	4.1	13.3
Paris (CAC 40)	4178.3	1.9	9.3	15.3
Frankfurt (DAX)	4527.2	3.1	6.4	17.2
Tokyo (NIKKEI 225)	11,329.7	2.9	-1.4	0.8
Hong Kong (Hang Seng)	13,873.1	2.3	-2.5	13.7
Toronto (S&P/TSX Composite)	9654.2	1.5	4.4	14.7
Mexico City (IPC)	13,143.6	0.7	1.7	30.9

FUNDAMENTALS

	MAY 31	WEEK AGO	YEAR AGO
S&P 500 Dividend Yield	2.04%	2.03%	1.64%
S&P 500 P/E Ratio (Trailing 12 mos.)	19.5	19.5	21.0
S&P 500 P/E Ratio (Next 12 mos.)*	15.6	15.7	16.8
First Call Earnings Revision*	-0.56%	-0.24%	1.79%

*First Call Corp.

TECHNICAL INDICATORS

	MAY 31	WEEK AGO	READING
S&P 500 200-day average	1164.7	1162.2	Positive
Stocks above 200-day average	59.0%	59.0%	Neutral
Options: Put/call ratio	0.74	0.77	Positive
Insiders: Vickers NYSE Sell/buy ratio	3.09	3.03	Negative

BEST-PERFORMING GROUPS

	LAST MONTH %	LAST 12 MONTHS %
Internet Retailers	23.3	69.1
Tires & Rubber	16.3	62.3
Constr. & Engineering	15.2	60.6
Constr. Materials	13.7	56.5
Semiconductors	13.6	56.1
Fertilizers & Ag. Chems.	69.1	69.1
Oil & Gas Drilling	62.3	62.3
Oil & Gas Refining	60.6	60.6
Managed Health Care	56.5	56.5
Homebuilding	56.1	56.1

WORST-PERFORMING GROUPS

	LAST MONTH %	LAST 12 MONTHS %
Aluminum	-4.7	-45.0
Forest Products	-4.1	-32.2
Multi-Utilities	-3.5	-27.5
Independent Pwr. & Engy.	-3.5	-22.1
Paper Products	-3.4	-20.0
IT Consulting	-4.7	-45.0
Automobiles	-4.1	-32.2
Insurance Brokers	-3.5	-27.5
Electric Mfg. Svcs.	-3.5	-22.1
Auto Parts & Equip.	-3.4	-20.0

EQUITY FUND CATEGORIES

4-WEEK TOTAL RETURN	%	52-WEEK TOTAL RETURN	%
LEADERS			
Technology	8.6	Latin America	56.1
Latin America	6.2	Natural Resources	34.2
Mid-cap Growth	5.9	Real Estate	31.4
Small-cap Growth	5.9	Diversified Emerg. Mkts.	28.5
LAGGARDS			
Japan	-1.9	Precious Metals	-1.1
Diversified Pacific/Asia	-0.2	Technology	-0.8
Europe	0.0	Japan	0.5
Foreign	0.0	Health	2.6

EQUITY FUNDS

4-WEEK TOTAL RETURN	%	52-WEEK TOTAL RETURN	%
LEADERS			
ProFunds Internet Inv.	19.4	iShares MSCI Brazil Idx.	72.4
ProFunds Semicdr. Inv.	18.2	Merrill Lynch Lat. Am. B	61.1
Rydex Dyn. Veloc. 100 H	16.4	T. Rowe Price Lat. Am.	59.2
ProFunds UltraOTC Inv.	16.3	Fidelity Latin America	57.3
LAGGARDS			
Rydex Dyn. Vent. 100 H	-14.3	Apex Mid Cap Growth	-28.2
ProFunds UltSh. OTC Inv.	-14.2	Reynolds	-24.2
Potomac Sm. Cap/Sh. Inv.	-10.5	ProFds. USh. Mid Cap Inv.	-23.9
ProFds. USh. Sm. Cap Inv.	-10.4	Van Wagoner Emerg. Gr.	-23.4

INTEREST RATES

	JUNE 1	WEEK AGO	YEAR AGO
KEY RATES			
Money Market Funds	2.56%	2.54%	0.60%
90-Day Treasury Bills	2.96	2.94	1.16
2-Year Treasury Notes	3.48	3.60	2.63
10-Year Treasury Notes	3.89	4.09	4.73
30-Year Treasury Bonds	4.26	4.43	5.42
30-Year Fixed Mortgage †	5.47	5.53	6.30

†BancQuote, Inc.

BLOOMBERG MUNI YIELD EQUIVALENTS

Taxable equivalent yields on AAA-rated, tax-exempt municipal bonds, assuming a 30% federal tax rate.

	10-YR. BOND	30-YR. BOND
General Obligations	3.58%	4.36%
Taxable Equivalent	5.11	6.23
Insured Revenue Bonds	3.73	4.45
Taxable Equivalent	5.33	6.36

THE WEEK AHEAD

INSTALLMENT CREDIT Tuesday, June 7, 3 p.m. EDT »

Consumers are forecast to have added \$5.6 billion of debt in April. That's the median estimate of economists polled by Action Economics. March installment credit also grew by \$5.6 billion.

INTERNATIONAL TRADE Friday, June 10, 8:30 a.m. EDT » The April foreign trade deficit probably widened to \$58 billion. In March the trade gap unexpectedly

narrowed to \$55 billion on a record level of exports. Exports are expected to grow, but imports most likely rebounded strongly after what looked like an anomalous drop in consumer goods imports in March.

EXPORT-IMPORT PRICES Friday, June 10, 8:30 a.m. EDT » Export prices most likely rose by 0.3% in May, after jumping 0.6% in April. Import prices are forecast to have declined by 0.4% in May,

following a 0.8% increase in the previous month. The retreat in import prices should come largely from lower petroleum prices.

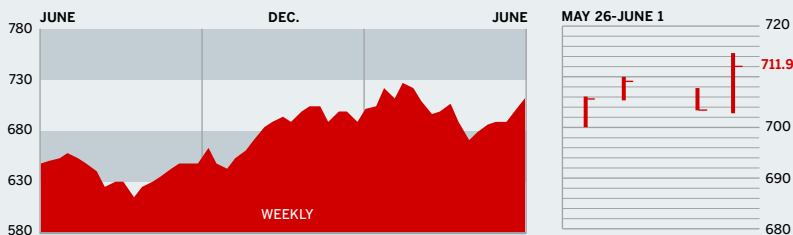
FEDERAL BUDGET Friday, June 10, 2 p.m. EDT » The Federal government probably ran a \$60 billion deficit in May, after a \$57 billion surplus in April, the biggest April surplus since 2002. The improving economy is helping to generate greater tax revenues from both households and businesses.

The *BusinessWeek* production index held steady at 241.1 for the week ended May 21 and remained 10% above the previous-year level. Before calculation of the four-week moving average, the index fell to 240.6.

BusinessWeek online

For the BW50, more investment data, and the components of the production index visit www.businessweek.com/magazine/extra.htm

THE BUSINESSWEEK FIFTY



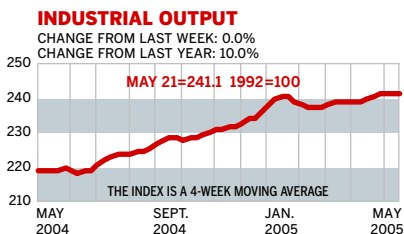
The BW50 turned in a strong performance, rising 1.7%. Pulte Homes climbed 7.1%, benefiting from the frothy real estate market. Yahoo added 6.0%, piggybacking on Google, whose shares topped \$290. Meanwhile, Electronic Arts, up 3.9%, and Qualcomm, up 3.6%, announced plans to create games for cell phones. Medical-device maker Boston Scientific fell 7.3%.

COMPANY PERFORMANCE

RANK	COMPANY	% CHANGE		RANK	COMPANY	% CHANGE	
		WEEK	SINCE 3/1/05			WEEK	SINCE 3/1/05
1	Nucor	6.1	-13.0	26	Johnson & Johnson	-0.2	2.6
2	ConocoPhillips	4.6	-0.7	27	Carnival	1.7	-2.3
3	ChevronTexaco	2.7	-11.8	28	Adobe Systems	1.3	7.5
4	Valero Energy	5.1	0.1	29	Cummins	1.6	-5.8
5	UnitedHealth Group	1.8	8.0	30	Boston Scientific	-7.3	-16.4
6	Occidental Petroleum	4.6	6.5	31	EOG Resources	3.2	13.2
7	Exxon Mobil	2.6	-9.7	32	Symantec	2.1	2.7
8	Yahoo	6.0	19.1	33	Starbucks	-0.2	5.9
9	Nextel Communications	5.6	3.8	34	Electronic Arts	3.9	-16.1
10	Apache	4.4	-4.8	35	WellPoint	-0.7	9.1
11	Devon Energy	3.5	0.3	36	Deere	0.8	-7.8
12	Pulte Homes	7.1	0.5	37	United States Steel	3.8	-35.7
13	Qualcomm	3.6	5.7	38	Zimmer Holdings	-2.0	-11.2
14	Apple Computer	1.3	-10.2	39	FedEx	1.7	-7.8
15	Dell	0.5	0.9	40	Chubb	1.8	6.5
16	Paccar	1.3	-5.1	41	XTO Energy	5.4	-6.9
17	Coach	5.0	10.4	42	Microsoft	0.5	2.7
18	Sunoco	4.2	6.7	43	Danaher	3.0	2.3
19	eBay	4.0	-8.8	44	Unocal	3.0	6.8
20	Burlington Resources	3.8	3.9	45	Dow Chemical	0.5	-16.5
21	Progressive	1.9	11.4	46	Cisco Systems	0.0	12.6
22	Caremark Rx	0.8	15.3	47	Gilead Sciences	3.4	21.0
23	Caterpillar	3.2	0.4	48	Nike	1.9	-4.4
24	Phelps Dodge	4.2	-16.6	49	Anadarko Petroleum	3.5	0.2
25	Autodesk	2.8	28.3	50	Bank of America	-0.5	-0.8

Data: Reuters

BW PRODUCTION INDEX



The production index was unchanged during the latest period. Before calculation of the four-week moving average, the index dipped to 240.6, from 241.8. On a seasonally adjusted basis, the components were evenly split. Coal output fell sharply. Auto and truck assemblies, along with rail-freight traffic, declined moderately. Lumber production had the biggest improvement, followed by steel. Electric power and crude-oil refining posted small gains for the week.

Information on each of the index components is at www.businessweek.com. BW production index Copyright 2005 by The McGraw-Hill Companies

ONLINE RESOURCES

BW50 Track the index and the companies in it all day long. Plus: our exclusive Info Tech 100 index.

BUSINESSWEEK INVESTING Real-time market coverage and investment tools in partnership with Standard & Poor's.

MUTUAL FUNDS Search for funds, view BW ratings, and read Q&As with fund managers.

COLUMNS Hot stocks, takeover plays, and the latest strategies for managing your money.

BusinessWeek online

For the BW50, more investment data, and the components of the production index visit www.businessweek.com/magazine/extra.htm