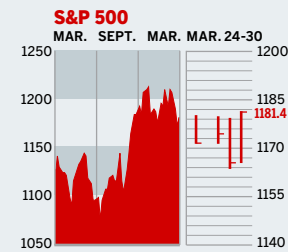


Personal Business Figures of the Week

STOCKS



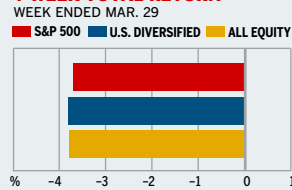
COMMENTARY

A drop in oil prices on Mar. 30 ignited a stock-market rally, sending indexes up for the week. Adding to the good cheer was news that the economy grew at a 3.8% clip in the last quarter of 2004. Investors, though, are fickle: Buyers shaved billions in market cap off of Caterpillar on fears that profits have peaked for the heavy-equipment maker. Meanwhile, scandal-plagued insurer AIG fell on new concerns over its accounting.

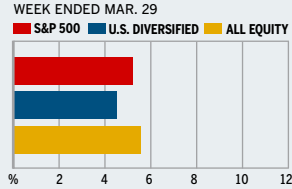
Data: Bloomberg Financial Markets, Reuters

MUTUAL FUNDS

4-WEEK TOTAL RETURN



52-WEEK TOTAL RETURN



Data: Standard & Poor's

U.S. MARKETS

	MAR. 30	WEEK	% CHANGE YEAR TO DATE	LAST 12 MONTHS
S&P 500	1181.4	0.8	-2.5	4.8
Dow Jones Industrials	10,540.9	0.8	-2.2	1.5
NASDAQ Composite	2005.7	0.8	-7.8	0.3
S&P MidCap 400	656.3	0.3	-1.1	9.2
S&P SmallCap 600	321.4	0.5	-2.3	12.2
DJ Wilshire 5000	11,634.0	0.7	-2.7	5.4

SECTORS

	MAR. 29	WEEK AGO	YEAR AGO	LAST 12 MONTHS
BusinessWeek 50*	698.5	0.3	-0.9	11.4
BW Info Tech 100**	349.8	0.4	-6.3	0.2
S&P/BARRA Growth	570.9	0.7	-1.9	2.8
S&P/BARRA Value	606.1	0.8	-3.1	6.8
S&P Energy	332.9	-0.5	15.3	42.8
S&P Financials	383.4	0.9	-6.7	-3.4
S&P REIT	132.4	1.0	-8.4	3.8
S&P Transportation	225.6	0.1	-6.6	18.7
S&P Utilities	146.4	1.4	3.4	18.9
GST Internet	155.8	2.1	-12.6	6.4
PSE Technology	730.6	0.6	-6.2	2.0

*Mar. 19, 1999=1000 **Feb. 7, 2000=1000

GLOBAL MARKETS

	MAR. 30	WEEK	% CHANGE YEAR TO DATE	LAST 12 MONTHS
S&P Euro Plus (U.S. Dollar)	1380.1	0.0	-1.2	18.4
London (FT-SE 100)	4900.7	-0.2	1.8	11.1
Paris (CAC 40)	4064.6	0.8	6.4	12.3
Frankfurt (DAX)	4347.5	0.7	2.1	12.2
Tokyo (NIKKEI 225)	11,565.9	-1.5	0.7	-1.1
Hong Kong (Hang Seng)	13,425.8	-1.3	-5.7	6.2
Toronto (S&P/TSX Composite)	9484.3	-0.7	2.6	10.0
Mexico City (IPC)	12,653.4	-1.6	-2.0	20.9

FUNDAMENTALS

	MAR. 29	WEEK AGO	YEAR AGO
S&P 500 Dividend Yield	2.04%	2.03%	1.58%
S&P 500 P/E Ratio (Trailing 12 mos.)	19.4	19.6	22.5
S&P 500 P/E Ratio (Next 12 mos.)*	15.7	15.8	17.9
First Call Earnings Revision*	0.79%	0.50%	1.60%

*First Call Corp.

TECHNICAL INDICATORS

	MAR. 29	WEEK AGO	READING
S&P 500 200-day average	1150.8	1150.1	Positive
Stocks above 200-day average	61.0%	65.0%	Neutral
Options: Put/call ratio	0.71	0.89	Positive
Insiders: Vickers NYSE Sell/buy ratio	4.82	4.84	Negative

BEST-PERFORMING GROUPS

	LAST MONTH %	LAST 12 MONTHS %
Health-Care Facilities	10.2	Fertilizers & Ag. Chems. 76.0
Fertilizers & Ag. Chems.	8.2	Oil & Gas Refining 71.4
Distillers & Vintners	7.2	Oil & Gas Exploration 56.3
Health-Care Services	6.7	Steel 54.9
Railroads	6.0	Managed Health Care 49.5

WORST-PERFORMING GROUPS

	LAST MONTH %	LAST 12 MONTHS %
Home Entertainment	-16.7	IT Consulting -50.2
Auto Parts & Equipment	-13.2	Insurance Brokers -29.3
Automobiles	-13.2	Automobiles -27.5
Multi-line Insurers	-12.3	Electric Mfg. Svcs. -27.3
Constr. & Engineering	-12.2	Auto Parts & Equipment -25.2

EQUITY FUND CATEGORIES

4-WEEK TOTAL RETURN	%	52-WEEK TOTAL RETURN	%
LEADERS			
Miscellaneous	-2.3	Natural Resources	34.9
Utilities	-2.5	Latin America	28.4
Domestic Hybrid	-2.5	Europe	21.2
International Hybrid	-2.9	Utilities	19.8
LAGGARDS			
Latin America	-10.2	Precious Metals	-10.1
Diversified Emerg. Mkts.	-8.2	Technology	-9.0
Precious Metals	-5.9	Japan	-3.3
Technology	-5.6	Health	-1.3

EQUITY FUNDS

4-WEEK TOTAL RETURN	%	52-WEEK TOTAL RETURN	%
LEADERS			
Potomac Sm. Cap/Sh. Inv.	12.3	ProFunds Oil & Gas Inv.	65.1
ProFds. USh. Sm. Cap Inv.	11.4	BlackRock Gl. Res. Inv. A	50.5
Rydex Dyn. Vent. 100 H	9.0	iShares MSCI Austria Idx.	47.2
ProFunds UltSh. OTC Inv	9.0	AIM European. Sm. Co. A	45.8
LAGGARDS			
American Heritage Growth	-14.3	Ameritor Investment	-50.0
Wells Fgo. Mgmt. E. Mkts. A	-12.8	Apex Mid Cap Growth	-36.8
U.S. Gbl. Accde. E. Erpn.	-12.1	Reynolds	-31.8
ProFunds Semicdr. Inv.	-11.9	ProFunds Semicdr. Inv.	-31.3

INTEREST RATES

KEY RATES

	MAR. 30	WEEK AGO	YEAR AGO
Money Market Funds	2.26%	2.21%	0.58%
90-Day Treasury Bills	2.82	2.81	0.95
2-Year Treasury Notes	3.83	3.82	1.58
10-Year Treasury Notes	4.55	4.59	3.84
30-Year Treasury Bonds	4.80	4.85	4.78
30-Year Fixed Mortgage †	6.00	6.05	5.49

†BarxQuote, Inc.

BLOOMBERG MUNI YIELD EQUIVALENTS

Taxable equivalent yields on AAA-rated, tax-exempt municipal bonds, assuming a 30% federal tax rate.

	10-YR. BOND	30-YR. BOND
General Obligations	3.91%	4.58%
Taxable Equivalent	5.59	6.54
Insured Revenue Bonds	4.01	4.70
Taxable Equivalent	5.73	6.71

THE WEEK AHEAD

NONMANUFACTURERS' INDEX

Tuesday, Apr. 5, 10 a.m. EDT

» The Institute for Supply Management's March non-manufacturing activity index is forecast to have edged down to 59%. That's according to the median forecast of economists surveyed by Action Economics. In February the index posted a small rebound to 59.8%. A reading above 50% indicates an increase in activity. Among nonmanufacturers,

consisting mostly of service industries, new orders accelerated during February, which helped fuel a pickup in hiring.

INITIAL UNEMPLOYMENT CLAIMS

Thursday, Apr. 7, 8:30 a.m. EDT » New filings for state unemployment benefits most likely stood at 322,000 in the week ended Apr. 2, compared with 324,000 in the period ended Mar. 19. The recent jobless claims figures have moved a little

higher but still indicate a healthy labor market.

INSTALLMENT CREDIT

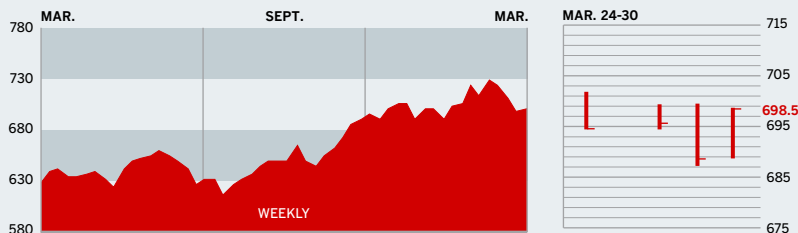
Thursday, Apr. 7, 3 p.m. EDT » During February, consumers are expected to have piled up an additional \$4.3 billion in debt. In January, installment credit jumped \$11.5 billion. The recent volatility in consumer credit has come from nonrevolving debt, which includes auto loans. Vehicle sales were nearly unchanged in February.

The BusinessWeek production index improved to 239 for the week ended Mar. 19, an 11.4% increase from a year ago. Before calculation of the four-week moving average, the index rose to 239.5.

BusinessWeek online

For the BW50, more investment data, and the components of the production index visit www.businessweek.com/magazine/extra.htm

THE BUSINESSWEEK FIFTY



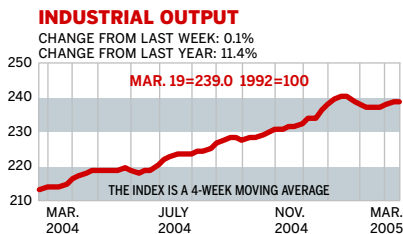
The BW50 eked out a modest 0.3% gain for the week. Leading the way were such tech stocks as Yahoo, Symantec, and eBay, which rose 8.5%, 6.4%, and 4.9%, respectively, as investors rotated out of once-hot energy and materials sectors and into shares of high-tech companies. U.S. Steel sank 7.1% and Dow Chemical fell 5.5% as players cashed in their chips.

COMPANY PERFORMANCE

RANK	COMPANY	% CHANGE		RANK	COMPANY	% CHANGE	
		WEEK	SINCE 3/1/05			WEEK	SINCE 3/1/05
1	Nucor	-6.3	-8.1	26	Johnson & Johnson	-0.2	3.7
2	ConocoPhillips	0.3	-4.9	27	Carnival	0.0	-4.6
3	ChevronTexaco	-0.3	-6.2	28	Adobe Systems	2.2	9.7
4	Valero Energy	-2.2	-1.2	29	Cummins	-3.1	-5.0
5	UnitedHealth Group	3.6	5.0	30	Boston Scientific	0.8	-10.5
6	Occidental Petroleum	0.9	-1.1	31	EOG Resources	3.0	1.8
7	Exxon Mobil	-1.4	-6.4	32	Symantec	6.4	-0.9
8	Yahoo	8.5	3.7	33	Starbucks	2.7	1.9
9	Nextel Communications	-0.8	-4.7	34	Electronic Arts	-2.6	-16.8
10	Apache	-0.5	-5.6	35	WellPoint	3.3	3.1
11	Devon Energy	1.1	-1.6	36	Deere	-1.1	-6.8
12	Pulte Homes	1.6	-6.9	37	United States Steel	-7.1	-18.9
13	Qualcomm	1.7	2.4	38	Zimmer Holdings	5.0	-3.8
14	Apple Computer	0.6	-4.6	39	FedEx	1.2	-2.8
15	Dell	0.3	-3.8	40	Chubb	4.6	1.0
16	Paccar	0.6	-4.1	41	XTO Energy	1.8	-6.3
17	Coach	2.1	2.4	42	Microsoft	-0.1	-4.0
18	Sunoco	-1.3	1.4	43	Danaher	-1.2	-1.7
19	eBay	4.9	-12.0	44	Unocal	2.7	13.3
20	Burlington Resources	0.4	-1.1	45	Dow Chemical	-5.5	-11.1
21	Progressive	2.7	5.3	46	Cisco Systems	1.6	3.5
22	Caremark Rx	3.4	4.5	47	Gilead Sciences	-0.3	3.8
23	Caterpillar	-2.3	-3.8	48	Nike	1.1	-5.3
24	Phelps Dodge	-3.6	-7.3	49	Anadarko Petroleum	0.4	-3.7
25	Autodesk	1.4	-0.5	50	Bank of America	0.1	-5.6

Data: Reuters

BW PRODUCTION INDEX



The production index eked out a fourth straight weekly gain. Before calculation of the four-week moving average, the index increased to 239.5, from 238.9. On a seasonally adjusted basis, the components were evenly split. Among the gainers, autos rose the most, followed by moderate rises among electric-power production, lumber, and crude oil refining. Coal output and truck assemblies showed modest drops, with rail freight traffic and steel slightly lower.

Information on each of the index components is at www.businessweek.com. BW production index Copyright 2005 by The McGraw-Hill Companies

ONLINE RESOURCES

BW50 Track the index and the companies in it all day long. Plus: our exclusive Info Tech 100 index.

BUSINESSWEEK INVESTING Real-time market coverage and investment tools in partnership with Standard & Poor's.

MUTUAL FUNDS Search for funds, view BW ratings, and read Q&As with fund managers.

COLUMNS Hot stocks, takeover plays, and the latest strategies for managing your money.

BusinessWeek online

For the BW50, more investment data, and the components of the production index visit www.businessweek.com/magazine/extra.htm