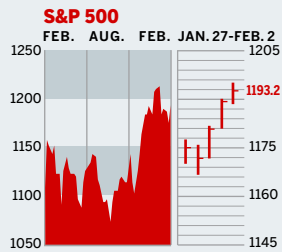


Personal Business Figures of the Week

STOCKS



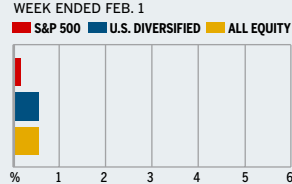
COMMENTARY

Merger activity and strong earnings lifted stocks. P&G's \$57 billion buyout of Gillette, along with SBC's "smaller" \$16 billion takeover of AT&T, signalled a shift in corporate thinking. Meanwhile, Google turned in a gangbuster performance, with earnings jumping tenfold, while net income at stent-maker Boston Scientific doubled. All the markets ended the week in positive territory.

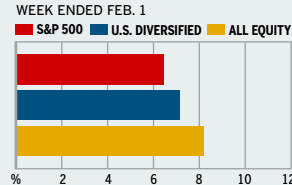
Data: Bloomberg Financial Markets, Reuters

MUTUAL FUNDS

4-WEEK TOTAL RETURN



52-WEEK TOTAL RETURN



Data: Standard & Poor's

U.S. MARKETS

	FEB. 2	WEEK	% CHANGE YEAR TO DATE	% CHANGE LAST 12 MONTHS
S&P 500	1193.2	1.6	-1.5	5.1
Dow Jones Industrials	10,596.8	0.9	-1.7	0.9
NASDAQ Composite	2075.1	1.4	-4.6	0.6
S&P MidCap 400	654.1	2.6	-1.4	11.1
S&P SmallCap 600	326.0	3.1	-0.8	17.3
DJ Wilshire 5000	11,752.3	1.8	-1.7	6.3

SECTORS

	FEB. 2	WEEK	% CHANGE YEAR TO DATE	% CHANGE LAST 12 MONTHS
BusinessWeek 50*	701.4	1.6	-0.5	11.3
BW Info Tech 100**	358.6	1.8	-3.9	0.1
S&P/BARRA Growth	574.1	1.6	-1.4	1.1
S&P/BARRA Value	614.8	1.6	-1.7	9.2
S&P Energy	306.7	4.2	6.3	35.0
S&P Financials	405.5	1.6	-1.4	3.2
S&P REIT	134.3	1.0	-7.0	10.0
S&P Transportation	221.5	0.7	-8.3	15.3
S&P Utilities	145.9	2.9	3.1	21.3
GSTI Internet	167.3	1.2	-6.2	13.8
PSE Technology	747.5	2.2	-4.1	2.0

*Mar. 19, 1999=1000 **Feb. 7, 2000=1000

GLOBAL MARKETS

	FEB. 2	WEEK	% CHANGE YEAR TO DATE	% CHANGE LAST 12 MONTHS
S&P Euro Plus (U.S. Dollar)	1366.1	1.3	-2.2	13.2
London (FT-SE 100)	4916.2	1.4	2.1	12.2
Paris (CAC 40)	3951.7	1.9	3.4	7.8
Frankfurt (DAX)	4296.3	2.0	0.9	5.5
Tokyo (NIKKEI 225)	11,407.1	0.3	-0.7	7.2
Hong Kong (Hang Seng)	13,555.8	-0.5	-4.7	3.6
Toronto (S&P/TSX Composite)	9303.9	1.5	0.6	7.7
Mexico City (IPC)	13,339.4	2.3	3.3	38.5

FUNDAMENTALS

	FEB. 1	WEEK AGO	YEAR AGO
S&P 500 Dividend Yield	1.93%	1.99%	1.54%
S&P 500 P/E Ratio (Trailing 12 mos.)	19.6	19.5	23.8
S&P 500 P/E Ratio (Next 12 mos.)*	16.2	15.9	18.2
First Call Earnings Surprise*	4.19%	2.61%	5.28%

*First Call Corp.

TECHNICAL INDICATORS

	FEB. 1	WEEK AGO	READING
S&P 500 200-day average	1135.0	1133.9	Positive
Stocks above 200-day average	74.0%	68.0%	Negative
Options: Put/call ratio	0.73	0.79	Positive
Insiders: Vickers NYSE Sell/buy ratio	4.52	5.09	Negative

BEST-PERFORMING GROUPS

	LAST MONTH %	LAST 12 MONTHS %
Personal Products	13.4	80.4
Oil & Gas Refining	13.1	80.2
Drug Chains	11.7	70.9
Oil & Gas Exploration	7.6	52.1
Agricultural Products	7.4	51.2

WORST-PERFORMING GROUPS

	LAST MONTH %	LAST 12 MONTHS %
Internet Retail	-32.2	-42.8
IT Consulting	-22.4	-31.7
Application Software	-12.4	-25.3
Electric Mfg. Svcs.	-12.0	-24.5
Airlines	-11.6	-23.9

EQUITY FUND CATEGORIES

4-WEEK TOTAL RETURN	%	52-WEEK TOTAL RETURN	%
LEADERS			
Natural Resources	7.4	Latin America	34.5
Latin America	4.8	Natural Resources	34.3
Utilities	3.2	Utilities	21.5
Diversified Emerg. Mkts.	3.0	Diversified Emerg. Mkts.	20.1
LAGGARDS			
Real Estate	-4.4	Technology	-7.3
Technology	-2.5	Precious Metals	-2.2
Communications	-1.7	Health	0.8
Large-cap Growth	-0.4	Large-cap Growth	2.5

EQUITY FUNDS

4-WEEK TOTAL RETURN	%	52-WEEK TOTAL RETURN	%
LEADERS			
ProFunds Oil & Gas Inv.	13.7	BlackRock Gl. Res. Inv. A	58.0
AIM Energy Investor	10.5	ProFunds Oil & Gas Inv.	54.2
CGM Capital Development	10.5	iShares MSCI Austria Idx.	50.6
T R. Price Em. Eur. & Mdn.	10.4	Metzler/Pdn. Eur. Em. Mkt.	49.5
LAGGARDS			
Apex Mid Cap Growth	-12.9	Ameritor Investment	-44.1
Amerindo Technology D	-10.9	ProFunds Semicdr. Inv.	-40.0
ProFds. Intnet. Ultsr. Inv.	-9.4	Van Wagoner Sm. Cap. Gr.	-30.8
American Heritage	-8.3	Apex Mid Cap Growth	-29.5

INTEREST RATES

KEY RATES

	FEB. 2	WEEK AGO	YEAR AGO
Money Market Funds	1.90%	1.85%	0.60%
90-Day Treasury Bills	2.50	2.41	0.92
2-Year Treasury Notes	3.32	3.25	1.76
10-Year Treasury Notes	4.14	4.19	4.11
30-Year Treasury Bonds	4.58	4.66	4.96
30-Year Fixed Mortgage †	5.60	5.59	5.61

†BarxQuote, Inc.

BLOOMBERG MUNI YIELD EQUIVALENTS

Taxable equivalent yields on AAA-rated, tax-exempt municipal bonds, assuming a 30% federal tax rate.

	10-YR. BOND	30-YR. BOND
General Obligations	3.54%	4.40%
Taxable Equivalent	5.06	6.29
Insured Revenue Bonds	3.66	4.55
Taxable Equivalent	5.23	6.50

THE WEEK AHEAD

INSTALLMENT CREDIT Monday, Feb. 7, 3 p.m. EST »

Consumers probably added \$6 billion of new debt in December. That's the median forecast of economists surveyed by Action Economics LLC. In November, debt shrank by \$8.7 billion, as people cut back on revolving credit, made up largely of credit-card balances.

INTERNATIONAL TRADE

Thursday, Feb. 10, 8:30 a.m. EST » The December foreign

trade deficit probably totaled \$57.5 billion. Exports very likely improved, while imports probably fell. The November trade gap hit a record \$60.3 billion. But Statistics Canada has reported an error in its November trade data, suggesting that the U.S. deficit for that month will be revised lower.

INITIAL UNEMPLOYMENT CLAIMS

Thursday, Feb. 10, 8:30 a.m. EST » New filings for state unemployment claims most likely

totaled about 315,000 in the week ending Feb. 5, from 325,000 for the week ended Jan. 21.

FEDERAL BUDGET

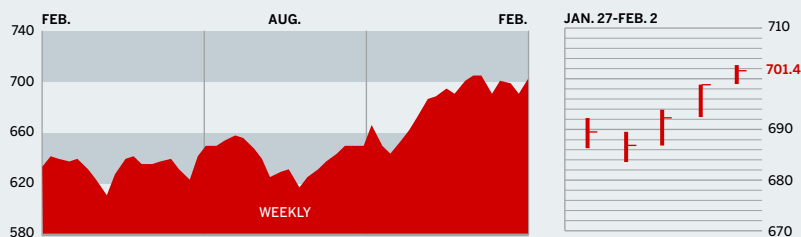
Thursday, Feb. 10, 2 p.m. EST » The federal government will probably report a \$5 billion surplus for January, the fourth month of fiscal year 2005, after a \$3.4 billion shortfall in December. The Office of Management & Budget is forecasting a deficit of \$331 billion for all of fiscal 2005.

The *BusinessWeek* production index rose to 240.8 for the week ended Jan. 22, a 12.8% increase from the previous year. Before calculation of the four-week moving average, the index slipped to 239.8.

BusinessWeek online

For the BW50, more investment data, and the components of the production index visit www.businessweek.com/magazine/extra.htm

THE BUSINESSWEEK FIFTY



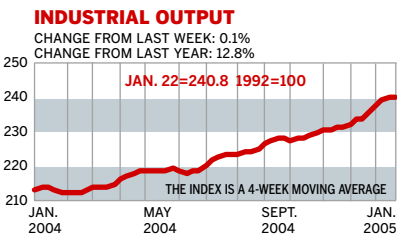
The BW50 turned in a strong performance this week, climbing 1.6% and beating the broader market. Pacing the pack were health-care outfits Quest Diagnostics and St. Jude Medical, which climbed due to better-than-expected earnings and an improved 2005 outlook. Energy stocks rose smartly, too. Lagging the bunch was eBay, whose earnings disappointed the Street.

COMPANY PERFORMANCE

RANK	COMPANY	WEEK	% CHANGE SINCE 3/1/04	RANK	COMPANY	WEEK	% CHANGE SINCE 3/1/04
1	Progressive	0.3	1.7	26	Procter & Gamble	-3.7	4.2
2	Cendant	4.8	4.3	27	Yahoo	0.2	60.3
3	WellPoint Health Networks	3.7	43.1	28	Apache	4.8	35.1
4	UnitedHealth Group	2.5	45.2	29	Sears, Roebuck	1.3	7.5
5	Forest Laboratories	2.7	-43.6	30	Stryker	2.7	15.1
6	ACE	1.9	-2.1	31	Sysco	-1.3	-12.4
7	Best Buy	-1.4	3.1	32	Dollar General	5.3	-3.0
8	ConocoPhillips	5.1	38.1	33	Bed Bath & Beyond	1.1	-1.6
9	Lowe's	2.2	2.3	34	Quest Diagnostics	8.5	17.2
10	Electronic Arts	4.3	39.0	35	Nike	1.8	18.4
11	Pulte Homes	4.2	29.4	36	Devon Energy	5.0	49.9
12	Centex	4.3	16.9	37	Intel	0.7	-22.7
13	eBay	-4.3	14.7	38	Johnson Controls	1.0	2.5
14	ChevronTexaco	3.7	25.7	39	Staples	-0.4	23.4
15	Symantec	0.6	12.2	40	American International Group	-0.3	-9.7
16	Dell	2.5	27.0	41	Ambac Financial Group	2.2	1.0
17	Qualcomm	-1.4	15.4	42	Express Scripts	2.4	4.3
18	International Game Technology	0.6	-20.7	43	Harley-Davidson	4.3	15.5
19	MBNA	0.6	-1.8	44	PepsiCo	1.4	4.3
20	Marathon Oil	1.5	13.8	45	Burlington Resources	1.7	54.9
21	St. Jude Medical	7.8	9.4	46	Carnival	0.4	27.4
22	Home Depot	1.4	13.7	47	3M	-0.1	6.8
23	Exxon Mobil	4.3	27.9	48	Apollo Group	1.7	2.9
24	Johnson & Johnson	2.1	22.4	49	KB Home	3.2	53.4
25	Starbucks	-2.4	44.4	50	Humana	5.0	58.1

Data: Reuters

BW PRODUCTION INDEX



The production index eked out a small increase over the latest period. Before calculation of the four-week moving average, however, the index eased down to 239.8, from 240.1. On a seasonally adjusted basis, the components were evenly split. Auto and truck assemblies, along with electric-power production and crude-oil refining, were higher. Rail-freight traffic was lower because of weather-related issues. Lumber and coal showed large declines, while steel output was down moderately.

Information on each of the index components is at www.businessweek.com. BW production index Copyright 2005 by The McGraw-Hill Companies

ONLINE RESOURCES

BW50 Track the index and the companies in it all day long. Plus: our exclusive Info Tech 100 index.

BUSINESSWEEK INVESTING Real-time market coverage and investment tools in partnership with Standard & Poor's.

MUTUAL FUNDS Search for funds, view BW ratings, and read Q&A's with fund managers.

COLUMNS Hot stocks, takeover plays, and the latest strategies for managing your money.

BusinessWeek online

For the BW50, more investment data, and the components of the production index visit www.businessweek.com/magazine/extra.htm