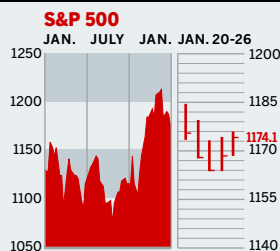


# Personal Business Figures of the Week

## STOCKS



### COMMENTARY

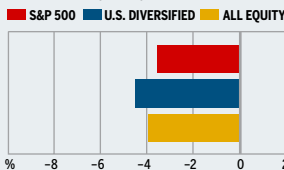
Although earnings from such bellwether outfits as GE came in higher than expected, markets declined, in part due to worries about low oil inventories. Energy concerns were up, however, and stocks rallied at the end of the week, almost managing to climb out of their hole. For the week, the Dow, the S&P 500, and NASDAQ lost 0.4%, 0.9%, and 1.3%, respectively.

Data: Bloomberg Financial Markets, Reuters

## MUTUAL FUNDS

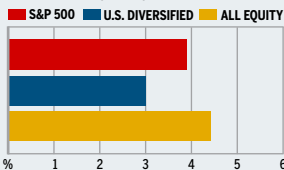
### 4-WEEK TOTAL RETURN

WEEK ENDED JAN. 25



### 52-WEEK TOTAL RETURN

WEEK ENDED JAN. 25



Data: Standard & Poor's

## U.S. MARKETS

	JAN. 26	WEEK	% CHANGE YEAR TO DATE	LAST 12 MONTHS
<b>S&amp;P 500</b>	1174.1	-0.9	-3.1	1.6
Dow Jones Industrials	10,498.6	-0.4	-2.6	-1.9
NASDAQ Composite	2046.1	-1.3	-5.9	-5.0
S&P MidCap 400	637.6	-0.4	-3.9	5.8
S&P SmallCap 600	316.2	0.3	-3.8	10.3
DJ Wilshire 5000	11,544.4	-0.8	-3.4	2.3

## SECTORS

	JAN. 25	WEEK AGO	YEAR AGO	LAST 12 MONTHS
<b>BusinessWeek 50*</b>	690.3	-1.2	11.0	8.8
BW Info Tech 100**	352.5	-1.4	0.6	-5.2
S&P/BARRA Growth	564.8	-1.0	-3.0	-2.2
S&P/BARRA Value	605.0	-0.7	-3.3	5.4
S&P Energy	294.4	1.4	2.0	26.8
S&P Financials	399.2	-0.8	-2.9	0.5
S&P REIT	133.0	-3.4	-8.0	12.3
S&P Transportation	219.9	-0.7	-8.9	10.3
S&P Utilities	141.9	0.9	0.2	17.9
GSTI Internet	165.4	-2.2	-7.2	4.4
PSE Technology	731.0	-1.0	-6.2	-2.5

\*Mar. 19, 1999=1000 \*\*Feb. 7, 2000=1000

## BEST-PERFORMING GROUPS

Group	Last Month %	Last 12 Months %
Drug Chains	6.2	74.0
Health-Care Facilities	6.1	65.9
Homebuilding	4.4	51.4
Oil & Gas Refining	3.7	47.7
Housewares & Specfits.	3.4	47.3
Fertilizers & Ag. Chem.	74.0	74.0
Steel	65.9	65.9
Oil & Gas Refining	51.4	51.4
Managed Health Care	47.7	47.7
Internet Software	47.3	47.3

## EQUITY FUND CATEGORIES

Category	4-WEEK TOTAL RETURN	%	Category	52-WEEK TOTAL RETURN	%
<b>LEADERS</b>			<b>LEADERS</b>		
Natural Resources	0.1		Natural Resources	26.1	
Pacific/Asia ex-Japan	-0.5		Latin America	22.6	
Diversified Emerg. Mkts.	-0.6		Real Estate	19.2	
Diversified Pacific/Asia	-0.8		Utilities	17.9	
<b>LAGGARDS</b>			<b>LAGGARDS</b>		
Technology	-9.0		Technology	-12.6	
Small-cap Growth	-6.7		Precious Metals	-6.6	
Real Estate	-6.2		Small-cap Growth	-2.8	
Communications	-6.0		Large-cap Growth	-0.6	

## EQUITY FUNDS

Fund	4-WEEK TOTAL RETURN	%	Fund	52-WEEK TOTAL RETURN	%
<b>LEADERS</b>			<b>LEADERS</b>		
Rydex Dyn. Vent. 100 H	18.6		iShares MSCI Austria Idx.	48.2	
ProFunds UHSh. OTC Inv.	18.5		State St. Rsch. Rsrcs. A	44.5	
ProFds. USh. Sm. Cap Inv.	16.2		Metzler/Pdn. Eur. Em. Mkt.	43.4	
Oppenheimer RI. Asst. A	11.3		Morgan. St. Eur. R. Est. A	41.9	
<b>LAGGARDS</b>			<b>LAGGARDS</b>		
ProFds. Intnet. Ultsr. Inv.	-19.0		Ameritor Investment	-45.7	
Apex Mid Cap Growth	-18.1		ProFunds Semicdr. Inv.	-44.9	
ProFunds UltraOTC Inv.	-16.2		Van Wagoner Sm. Cap. Gr.	-36.5	
Rydex Dyn. Veloc. 100 H	-16.2		Apex Mid Cap Growth	-34.7	

## GLOBAL MARKETS

	JAN. 26	WEEK	% CHANGE YEAR TO DATE	LAST 12 MONTHS
<b>S&amp;P Euro Plus (U.S. Dollar)</b>	1348.1	-0.3	-3.5	10.0
London (FT-SE 100)	4847.1	0.6	0.7	9.0
Paris (CAC 40)	3879.8	0.3	1.5	5.6
Frankfurt (DAX)	4214.1	-0.7	-1.0	2.1
Tokyo (NIKKEI 225)	11,376.6	-0.3	-1.0	4.1
Hong Kong (Hang Seng)	13,623.7	-0.4	-4.3	-1.0
Toronto (S&P/TSX Composite)	9162.4	0.5	-0.9	6.6
Mexico City (IPC)	13,045.1	0.1	1.0	36.4

## FUNDAMENTALS

	JAN. 25	WEEK AGO	YEAR AGO
<b>S&amp;P 500 Dividend Yield</b>	1.99%	1.94%	1.51%
S&P 500 P/E Ratio (Trailing 12 mos.)	19.5	20.2	27.4
S&P 500 P/E Ratio (Next 12 mos.)*	15.9	16.2	18.4
First Call Earnings Surprise*	2.61%	4.02%	5.36%

\*First Call Corp.

## TECHNICAL INDICATORS

	JAN. 25	WEEK AGO	READING
<b>S&amp;P 500 200-day average</b>	1133.9	1133.4	Positive
Stocks above 200-day average	68.0%	75.0%	Neutral
Options: Put/call ratio	0.79	0.69	Positive
Insiders: Vickers NYSE Sell/buy ratio	5.09	5.35	Negative

## WORST-PERFORMING GROUPS

Group	Last Month %	Last 12 Months %
Internet Retail	-27.4	-46.4
IT Consulting	-22.8	-31.0
Communication Equipment	-11.5	-30.8
Air Freight & Couriers	-10.8	-30.2
Airlines	-10.4	-29.4
IT Consulting	-46.4	-46.4
Semiconductor Equip.	-31.0	-31.0
Insurance Brokers	-30.8	-30.8
Electric Mfg. Svcs.	-30.2	-30.2
Semiconductors	-29.4	-29.4

## INTEREST RATES

### KEY RATES

	JAN. 26	WEEK AGO	YEAR AGO
<b>Money Market Funds</b>	1.85%	1.81%	0.61%
90-Day Treasury Bills	2.41	2.36	0.93
2-Year Treasury Notes	3.25	3.22	1.82
10-Year Treasury Notes	4.19	4.18	4.19
30-Year Treasury Bonds	4.66	4.66	5.00
30-Year Fixed Mortgage †	5.59	5.61	5.61

†BancQuote, Inc.

## BLOOMBERG MUNI YIELD EQUIVALENTS

Taxable equivalent yields on AAA-rated, tax-exempt municipal bonds, assuming a 30% federal tax rate.

	10-YR. BOND	30-YR. BOND
<b>General Obligations</b>	3.58%	4.42%
<b>Taxable Equivalent</b>	5.11	6.31
<b>Insured Revenue Bonds</b>	3.71	4.57
<b>Taxable Equivalent</b>	5.30	6.53

## THE WEEK AHEAD

**NEW HOME SALES** Monday, Jan. 31, 8:30 a.m. EST » New homes probably sold at an annual rate of 1.2 million in December, up from 1.12 million in November. That's the median forecast of economists surveyed by Action Economics LLC.

**FOMC MEETING** Tuesday, Feb. 1, 9 a.m. EST » The Federal Reserve's Open Market Committee begins its two-day meeting to set monetary policy. In the Action poll,

economists were unanimous in forecasting a quarter-point hike in the federal funds rate, to 2.5%.

**PURCHASING MANAGERS' INDEX** Tuesday, Feb. 1, 10 a.m. EST » The Institute for Supply Management's manufacturing index probably dipped to 58% in January from 58.6% in December.

**PRODUCTIVITY & COSTS** Thursday, Feb. 3, 8:30 a.m. EST » Output per hour worked probably grew at a 1.9% annual rate

in the fourth quarter compared with the third, when it rose at a 1.8% pace. Unit labor costs very likely also grew by 1.9% last quarter, on top of a 1.8% rise in the third.

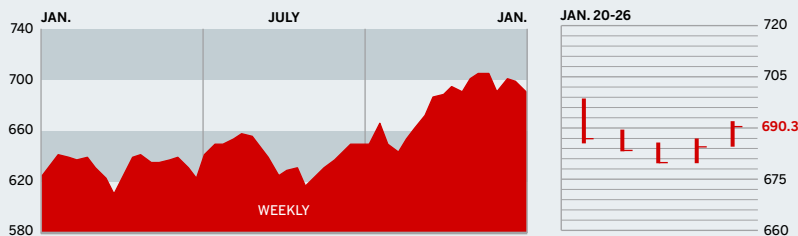
**EMPLOYMENT** Friday, Feb. 4, 8:30 a.m. EST » The Action Economics survey calls for a gain of 180,000 new nonfarm jobs in January, better than the 157,000 positions created in December. The unemployment rate is expected to remain at 5.4%.

The *BusinessWeek* production index increased 0.5% in the week ended Jan. 15 and stood 12.3% above its year-ago reading. Before calculation of the four-week moving average, the index fell again, to 240.1 from 240.5.

**BusinessWeek** online

For the BW50, more investment data, and the components of the production index visit [www.businessweek.com/magazine/extra.htm](http://www.businessweek.com/magazine/extra.htm)

# THE BUSINESSWEEK FIFTY



The BW50 fell 1.2%. Leading the decline were former faves eBay and Qualcomm. eBay got hammered after reporting weaker earnings than investors were looking for, and Qualcomm, while exceeding earnings expectations in the past quarter, did not paint a sufficiently rosy picture for the coming one. Energy outfits remain the lone bright spot in this market.

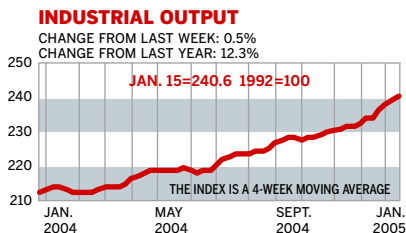
## COMPANY PERFORMANCE

RANK	COMPANY	% CHANGE WEEK	% CHANGE SINCE 3/1/04
1	Progressive	-1.9	1.4
2	Cendant	0.6	-0.4
3	WellPoint Health Networks	-4.1	37.9
4	UnitedHealth Group	-0.5	41.6
5	Forest Laboratories	-2.6	-45.1
6	ACE	-1.6	-4.0
7	Best Buy	-2.9	4.5
8	ConocoPhillips	1.4	31.4
9	Lowe's	-1.9	0.1
10	Electronic Arts	4.3	33.2
11	Pulte Homes	-1.5	24.2
12	Centex	-2.0	12.1
13	eBay	-20.1	19.8
14	ChevronTexaco	1.6	21.2
15	Symantec	-8.3	11.6
16	Dell	1.0	23.9
17	Qualcomm	-10.2	17.0
18	International Game Technology	-7.8	-21.2
19	MBNA	-1.8	-2.3
20	Marathon Oil	2.5	12.1
21	St. Jude Medical	-4.7	1.5
22	Home Depot	-2.6	12.2
23	Exxon Mobil	1.3	22.6
24	Johnson & Johnson	2.9	19.9
25	Starbucks	-4.2	48.0

RANK	COMPANY	% CHANGE WEEK	% CHANGE SINCE 3/1/04
26	Procter & Gamble	-2.2	8.2
27	Yahoo	-2.7	60.0
28	Apache	2.0	29.0
29	Sears, Roebuck	-0.2	6.1
30	Stryker	-1.7	12.1
31	Sysco	-2.3	-11.2
32	Dollar General	-1.6	-7.8
33	Bed Bath & Beyond	-4.0	-2.6
34	Quest Diagnostics	-3.0	8.0
35	Nike	-3.8	16.2
36	Devon Energy	2.7	42.8
37	Intel	-0.8	-23.2
38	Johnson Controls	-2.8	1.4
39	Staples	-0.9	23.9
40	American International Group	0.1	-9.4
41	Ambac Financial Group	-5.0	-1.2
42	Express Scripts	-2.9	1.8
43	Harley-Davidson	-1.5	10.7
44	PepsiCo	-1.1	2.9
45	Burlington Resources	2.8	52.4
46	Carnival	-3.6	27.0
47	3M	1.5	6.9
48	Apollo Group	-4.1	1.2
49	KB Home	-1.9	48.6
50	Humana	0.2	50.6

Data: Reuters

## BW PRODUCTION INDEX



The production index increased in the latest week, to 240.6 from 239.5. But before calculation of the four-week moving average, the index dropped for the second week in a row, to 240.1 from 240.5. On a seasonally adjusted basis, auto, steel, and electric-power production were up strongly in the latest week, followed by smaller gains in truck and crude-oil refining output. Rail-freight traffic dropped sharply, while coal and lumber production were unchanged for the week.

Information on each of the index components is at [www.businessweek.com](http://www.businessweek.com). BW production index Copyright 2005 by The McGraw-Hill Companies

## ONLINE RESOURCES

**BW50** Track the index and the companies in it all day long. Plus: our exclusive Info Tech 100 index.

**BUSINESSWEEK INVESTING** Real-time market coverage and investment tools in partnership with Standard & Poor's.

**MUTUAL FUNDS** Search for funds, view BW ratings, and read Q&As with fund managers.

**COLUMNS** Hot stocks, takeover plays, and the latest strategies for managing your money.

**BusinessWeek** online

For the BW50, more investment data, and the components of the production index visit [www.businessweek.com/magazine/extra.htm](http://www.businessweek.com/magazine/extra.htm)