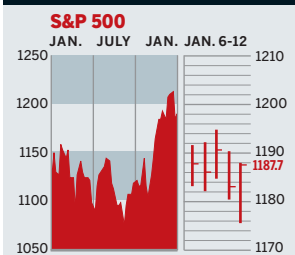


Personal Business Figures of the Week

STOCKS

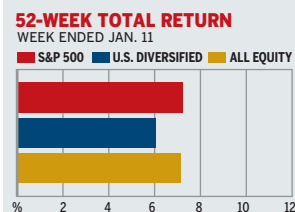
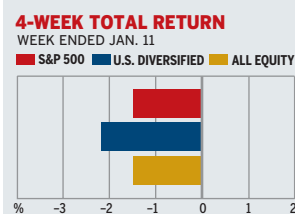


COMMENTARY

After bouncing around most of the week, markets got a boost on news that Intel earnings and sales beat expectations. Looking ahead, the chipmaker said tech spending is picking up. Apple Computer also added some shine, announcing it will offer consumers low-cost Macs. For the week, the Dow, the NASDAQ Composite, and S&P 500 all finished in positive territory.

Data: Bloomberg Financial Markets, Reuters

MUTUAL FUNDS



Data: Standard & Poor's

U.S. MARKETS

	JAN. 12	WEEK	% CHANGE YEAR TO DATE	LAST 12 MONTHS
S&P 500	1187.7	0.3	-2.0	5.4
Dow Jones Industrials	10,617.8	0.2	-1.5	1.3
NASDAQ Composite	2092.5	0.1	-3.8	-0.9
S&P MidCap 400	636.1	0.2	-4.1	8.2
S&P SmallCap 600	311.3	-0.3	-5.3	12.3
DJ Wilshire 5000	11,642.7	0.3	-2.6	5.9

SECTORS

	JAN. 12	WEEK	% CHANGE YEAR TO DATE	LAST 12 MONTHS
BusinessWeek 50*	699.5	1.5	12.4	13.3
BW Info Tech 100**	361.2	-0.1	3.0	-2.0
S&P/BARRA Growth	573.3	0.7	-1.5	1.7
S&P/BARRA Value	610.0	-0.1	-2.5	9.1
S&P Energy	285.3	3.1	-1.2	26.7
S&P Financials	402.3	-0.6	-2.1	5.1
S&P REIT	133.7	-1.3	-7.5	15.5
S&P Transportation	225.6	-4.0	-6.6	14.6
S&P Utilities	138.2	0.5	-2.4	17.1
GSTI Internet	167.1	-0.2	-6.3	9.5
PSE Technology	741.2	-0.8	-4.9	0.9

*Mar. 19, 1999=1000 **Feb. 7, 2000=1000

BEST-PERFORMING GROUPS

Group	Last Month %	Last 12 Months %
Fertilizers & Ag. Chems.	10.5	89.8
Home Entertainment	9.0	67.3
Drug Chains	6.7	59.5
Oil & Gas Drilling	6.1	56.6
Employment Services	4.7	54.1

EQUITY FUND CATEGORIES

Category	4-Week Total Return %	52-Week Total Return %
LEADERS		
Japan	7.0	23.9
Diversified Pacific/Asia	4.6	23.3
Diversified Emerg. Mkts.	2.1	20.2
Pacific/Asia ex-Japan	1.6	18.5
LAGGARDS		
Technology	-5.7	-10.7
Real Estate	-4.0	-9.1
Small-cap Growth	-3.6	0.7
Small-cap Blend	-3.1	3.0

EQUITY FUNDS

Fund	4-Week Total Return %	52-Week Total Return %
LEADERS		
ProFds. USh. Sm. Cap Inv.	10.4	56.4
Rydex Dyn. Vent. 100 H	9.9	53.3
ProFunds UltSh. OTC Inv.	9.8	48.5
ProFunds Ult. Japan Inv.	9.4	44.5
LAGGARDS		
Apex Mid Cap Growth	-12.4	-47.3
ProFunds Semicdr. Inv.	-10.8	-42.9
Rydex Electronics Inv.	-10.4	-34.0
ProFds. Ult. Sm. Cap Inv.	-10.3	-33.9

GLOBAL MARKETS

	JAN. 12	WEEK	% CHANGE YEAR TO DATE	LAST 12 MONTHS
S&P Euro Plus (U.S. Dollar)	1351.7	-0.8	-3.3	11.4
London (FT-SE 100)	4783.6	-0.5	-0.6	7.5
Paris (CAC 40)	3816.1	-0.3	-0.1	7.2
Frankfurt (DAX)	4208.8	-1.2	-1.1	5.3
Tokyo (NIKKEI 225)	11,453.4	-0.6	-0.3	5.6
Hong Kong (Hang Seng)	13,565.3	-1.4	-4.7	1.3
Toronto (S&P/TSX Composite)	9022.7	0.0	-2.4	7.7
Mexico City (IPC)	12,329.2	-2.1	-4.6	35.1

FUNDAMENTALS

	JAN. 11	WEEK AGO	YEAR AGO
S&P 500 Dividend Yield	1.95%	1.93%	1.55%
S&P 500 P/E Ratio (Trailing 12 mos.)	20.0	20.0	28.1
S&P 500 P/E Ratio (Next 12 mos.)*	16.1	16.1	18.1
First Call Earnings Surprise*	6.91%	7.90%	5.45%

*First Call Corp.

TECHNICAL INDICATORS

	JAN. 11	WEEK AGO	READING
S&P 500 200-day average	1132.0	1129.8	Positive
Stocks above 200-day average	72.0%	76.0%	Negative
Options: Put/call ratio	0.73	0.68	Positive
Insiders: Vickers NYSE Sell/buy ratio	5.80	6.34	Negative

WORST-PERFORMING GROUPS

Group	Last Month %	Last 12 Months %
IT Consulting	-13.3	-44.8
Electric Mfg. Svcs.	-10.4	-33.9
Air Freight & Couriers	-9.4	-31.2
Aluminum	-8.3	-30.9
Home Furnishings	-7.2	-27.2

INTEREST RATES

Instrument	JAN. 12	WEEK AGO	YEAR AGO
KEY RATES			
Money Market Funds	1.78%	1.76%	0.62%
90-Day Treasury Bills	2.33	2.32	0.88
2-Year Treasury Notes	3.20	3.20	1.62
10-Year Treasury Notes	4.24	4.28	3.99
30-Year Treasury Bonds	4.77	4.85	4.89
30-Year Fixed Mortgage †	5.70	5.74	5.66

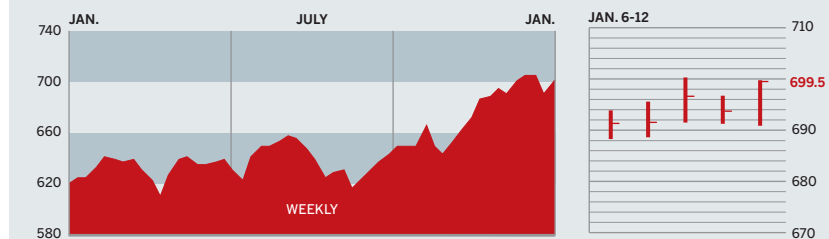
†BarxQuote, Inc.

BLOOMBERG MUNI YIELD EQUIVALENTS

Taxable equivalent yields on AAA-rated, tax-exempt municipal bonds, assuming a 30% federal tax rate.

	10-YR. BOND	30-YR. BOND
General Obligations	3.57%	4.49%
Taxable Equivalent	5.10	6.41
Insured Revenue Bonds	3.73	4.62
Taxable Equivalent	5.33	6.60

THE BUSINESSWEEK FIFTY



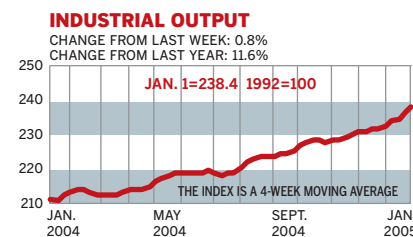
The BW50 gained 1.5% for the week, soundly beating all the broader indexes. Leading the way were such health-care providers as Humana and WellPoint Health networks, up 6.0% and 5.6%, respectively. Also pacing the results was Marathon Oil, which climbed 6.1%, in part on takeover speculation. Starbucks, however, fell 7.4%, on disappointing December same-store sales.

COMPANY PERFORMANCE

Rank	Company	Week % Change	Since 3/1/04 % Change
1	Progressive	-2.6	2.2
2	Cendant	-1.4	-2.1
3	WellPoint Health Networks	5.6	41.6
4	UnitedHealth Group	2.4	42.1
5	Forest Laboratories	4.7	-42.2
6	ACE	1.4	-4.9
7	Best Buy	-2.3	6.5
8	ConocoPhillips	3.7	26.7
9	Lowe's	2.0	2.5
10	Electronic Arts	-1.0	25.3
11	Pulte Homes	3.9	18.8
12	Centex	5.5	8.1
13	eBay	-3.3	56.1
14	ChevronTexaco	3.2	18.8
15	Symantec	-6.3	14.6
16	Dell	1.7	25.4
17	Qualcomm	1.9	36.7
18	International Game Technology	-1.8	-15.9
19	MBNA	0.0	1.0
20	Marathon Oil	6.1	7.9
21	St. Jude Medical	-2.1	8.2
22	Home Depot	0.1	16.2
23	Exxon Mobil	2.2	20.0
24	Johnson & Johnson	1.1	17.5
25	Starbucks	-7.4	52.5
26	Procter & Gamble	2.6	10.2
27	Yahoo	0.0	63.0
28	Apache	4.1	20.7
29	Sears, Roebuck	-0.4	6.8
30	Stryker	2.0	12.5
31	Sysco	-0.6	-8.4
32	Dollar General	-2.1	-6.3
33	Bed Bath & Beyond	2.3	0.0
34	Quest Diagnostics	1.2	12.8
35	Nike	0.3	20.9
36	Devon Energy	4.4	34.6
37	Intel	3.4	-20.7
38	Johnson Controls	-0.4	4.9
39	Staples	1.8	25.1
40	American International Group	-0.8	-9.8
41	Ambac Financial Group	-1.4	3.5
42	Express Scripts	2.3	6.8
43	Harley-Davidson	-0.1	12.4
44	PepsiCo	3.8	3.3
45	Burlington Resources	3.7	43.7
46	Carnival	-1.4	26.5
47	3M	5.2	8.9
48	Apollo Group	2.3	8.9
49	KB Home	4.9	43.0
50	Humana	6.0	43.7

Data: Reuters

BW PRODUCTION INDEX



The production index ended the year on a positive note. Before calculation of the four-week moving average, the index hit 242.7, from 239.2. After seasonal adjustments, lumber output posted the biggest gain, followed by rail-freight traffic, coal, steel production, and crude-oil refining. Electric power was the only component to decline. Nearly all U.S. vehicle plants were closed between the Christmas and New Year's holidays. During December, average index level swelled to 237.8, from 231.7 in November.

Information on each of the index components is at www.businessweek.com. BW production index Copyright 2005 by The McGraw-Hill Companies

ONLINE RESOURCES

BW50 Track the index and the companies in it all day long. Plus: our exclusive Info Tech 100 index.

BUSINESSWEEK INVESTING Real-time market coverage and investment tools in partnership with Standard & Poor's.

MUTUAL FUNDS Search for funds, view BW ratings, and read Q&As with fund managers.

COLUMNS Hot stocks, takeover plays, and the latest strategies for managing your money.

THE WEEK AHEAD

CONSUMER PRICE INDEX

Wednesday, Jan. 19, 8:30 a.m. EST » Consumer prices for goods and services are forecast to have edged up 0.1% in December, after a 0.2% increase during November. That's according to the median forecast of economists surveyed by Action Economics LLC. Excluding the more volatile food and energy categories, core prices most likely moved up 0.2% for a third straight period.

RESIDENTIAL CONSTRUCTION

Wednesday, Jan. 19, 8:30 a.m. EST » December housing starts probably bounced up to an annual rate of 1.85 million. In November sales slowed to a pace of 1.77 million, the lowest since May, 2003.

BEIGE BOOK Wednesday, Jan. 19, 2 p.m. EST » The Federal Reserve will release its report on regional economic activity ahead of the two-day monetary policy

meeting scheduled for Feb. 1-2.

The consensus estimate from Action Economics is for another hike in the federal funds rate, to 2.5%, from 2.25%.

LEADING INDICATORS Thursday, Jan. 20, 10 a.m. EST » The Conference Board's December index of leading economic indicators very likely increased 0.2% for a second consecutive month, after five straight monthly declines.

The BusinessWeek production index climbed to 238.4 for the week ended Jan. 1, and 11.6% from the previous year. Before calculation of the four-week moving average, the index surged to 242.7.

BusinessWeek online

For the BW50, more investment data, and the components of the production index visit www.businessweek.com/magazine/extra.htm

BusinessWeek online

For the BW50, more investment data, and the components of the production index visit www.businessweek.com/magazine/extra.htm