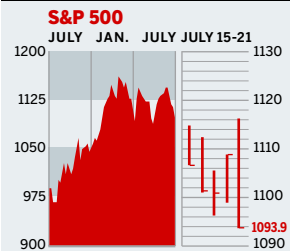


STOCKS

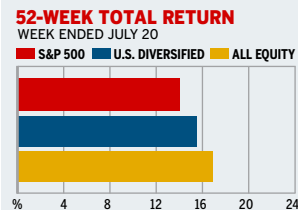
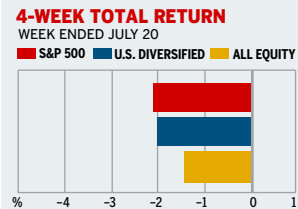


COMMENTARY

Stocks gave up ground in spite of Fed Chair Alan Greenspan's and Microsoft Chair Bill Gates's best efforts. First, Greenspan vouched for the recovery's durability. Then, Gates & Co. followed with a \$75 billion gift to the investor class. The result? Stocks edged up, then down, despite strong profits from such outfits as Kodak and Pfizer. Hardest hit was tech, where hopes may have run too high.

Data: Bloomberg Financial Markets, Reuters

MUTUAL FUNDS



Data: Standard & Poor's

U.S. MARKETS

	JULY 21	WEEK	% CHANGE YEAR TO DATE	LAST 12 MONTHS
S&P 500	1093.9	-1.6	-1.6	11.8
Dow Jones Industrials	10,046.1	-1.6	-3.9	10.4
NASDAQ Composite	1874.4	-2.1	-6.4	11.5
S&P MidCap 400	579.2	-1.0	0.6	18.7
S&P SmallCap 600	278.4	-1.5	2.9	23.8
Russell 3000	618.6	-1.6	-1.8	12.4

SECTORS

	JULY 21	WEEK	% CHANGE YEAR TO DATE	LAST 12 MONTHS
BusinessWeek 50*	624.6	-2.3	0.4	7.9
BW Info Tech 100**	323.1	-1.5	-7.8	5.7
S&P/BARRA Growth	539.1	-2.0	-3.0	8.5
S&P/BARRA Value	550.7	-1.2	-0.2	15.1
S&P Energy	254.1	-0.6	13.3	32.6
S&P Financials	372.0	-1.2	-2.1	9.0
S&P REIT	121.8	0.4	5.2	19.3
S&P Transportation	200.0	-0.3	-1.0	11.2
S&P Utilities	121.0	0.0	2.2	15.7
GSTI Internet	141.0	-5.7	-2.5	12.2
PSE Technology	663.0	-2.5	-4.9	15.8

*Mar. 19, 1999=1000 **Feb. 7, 2000=1000

GLOBAL MARKETS

	JULY 21	WEEK	% CHANGE YEAR TO DATE	LAST 12 MONTHS
S&P Euro Plus (U.S. Dollar)	1162.0	-1.7	-1.4	24.1
London (FT-SE 100)	4377.3	0.1	-2.2	8.2
Paris (CAC 40)	3637.5	-0.3	2.2	18.1
Frankfurt (DAX)	3877.5	-0.5	-2.2	18.0
Tokyo (NIKKEI 225)	11,433.9	0.1	7.1	20.5
Hong Kong (Hang Seng)	12,395.1	3.9	-1.4	23.8
Toronto (S&P/TSX Composite)	8454.2	0.0	2.8	18.5
Mexico City (IPC)	9987.1	1.5	13.6	42.2

FUNDAMENTALS

	JULY 20	WEEK AGO	YEAR AGO
S&P 500 Dividend Yield	1.67%	1.66%	1.65%
S&P 500 P/E Ratio (Trailing 12 mos.)	20.7	20.8	31.1
S&P 500 P/E Ratio (Next 12 mos.)*	16.1	16.3	17.0
First Call Earnings Revision*	-0.25%	4.19%	6.01%

*First Call Corp.

TECHNICAL INDICATORS

	JULY 20	WEEK AGO	READING
S&P 500 200-day average	1104.6	1102.1	Negative
Stocks above 200-day average	58.0%	60.0%	Neutral
Options: Put/call ratio	0.79	0.85	Positive
Insiders: Vickers NYSE Sell/buy ratio	3.66	3.58	Negative

BEST-PERFORMING GROUPS

	LAST MONTH %	LAST 12 MONTHS %
Photographic Products	7.2	81.1
Steel	6.7	78.7
Oil & Gas Equipment	5.1	74.6
Divsfd. Capital Mkts.	4.8	69.8
Fertilizers & Ag. Chems.	4.3	59.7
Internet Software		81.1
Oil & Gas Refining		78.7
Steel		74.6
Fertilizers & Ag. Chems.		69.8
Divsfd. Metals & Mining		59.7

WORST-PERFORMING GROUPS

	LAST MONTH %	LAST 12 MONTHS %
IT Consulting	-24.8	-19.4
Health-Care Distributors	-19.9	-19.4
Semiconductors	-14.3	-16.3
Application Software	-13.6	-12.9
Internet Software	-11.2	-10.8
Airlines		-19.4
Health-Care Distributors		-19.4
IT Consulting		-16.3
Biotechnology		-12.9
Semiconductor Equip.		-10.8

EQUITY FUND CATEGORIES

4-WEEK TOTAL RETURN	%	52-WEEK TOTAL RETURN	%
LEADERS			
Latin America	5.8	Natural Resources	40.4
Real Estate	4.0	Japan	38.5
Natural Resources	3.9	Latin America	33.0
Pacific/Asia ex-Japan	2.7	Europe	29.4
LAGGARDS			
Technology	-6.7	Technology	8.5
Small-cap Growth	-3.2	Large-cap Growth	9.2
Health	-3.1	Health	9.5
Large-cap Growth	-3.1	Domestic Hybrid	9.9

EQUITY FUNDS

4-WEEK TOTAL RETURN	%	52-WEEK TOTAL RETURN	%
LEADERS			
iShares MSCI Brazil Idx.	14.2	U.S. Gibl. Invs. Gl. Rscs.	68.8
Guinness Atkn. China & H.K.	8.4	Fidelity Japan Small Co.	68.0
Dreyfus Prmr. Gr. China A	7.8	State St. Rsch. Gl. Rs. A	66.6
ProFunds UltSh. OTC Inv.	7.3	ProFds. Wrssl. Ultsr. Inv.	64.1
LAGGARDS			
ProFds. Smicdr. Ultsr. Inv.	-18.8	ProFunds UltSh. OTC Inv.	-29.7
Royce Technology Value	-13.5	Rydex Dynam. Vent. 100	-29.7
ProFds. Intnet. Ultsr. Inv.	-13.0	Ameritor Investment	-28.9
Reynolds	-12.6	Rydex Dyn. Tempest 500	-25.2

INTEREST RATES

KEY RATES

	JULY 21	WEEK AGO	YEAR AGO
Money Market Funds	0.82%	0.79%	0.65%
90-Day Treasury Bills	1.34	1.33	0.91
2-Year Treasury Notes	2.67	2.59	1.49
10-Year Treasury Notes	4.48	4.48	4.11
30-Year Treasury Bonds	5.20	5.22	5.04
30-Year Fixed Mortgage †	5.99	6.00	6.05

†BanxQuote, Inc.

BLOOMBERG MUNI YIELD EQUIVALENTS

Taxable equivalent yields on AAA-rated, tax-exempt municipal bonds, assuming a 30% federal tax rate.

	10-YR. BOND	30-YR. BOND
General Obligations	3.82%	4.89%
Taxable Equivalent	5.46	6.99
Insured Revenue Bonds	3.98	5.11
Taxable Equivalent	5.69	7.30

THE WEEK AHEAD

CONSUMER CONFIDENCE

Tuesday, July 27, 10 a.m. EDT » The Conference Board's July confidence index most likely was virtually unchanged at 102. That's according to the median forecast of economists surveyed by Action Economics. In June, the index rose to 101.9.

DURABLE GOODS ORDERS

Wednesday, July 28, 8:30 a.m. EDT » New durable goods orders for June probably rose

1.3%. In May, new orders declined for a second straight month, falling by 1.8%.

BEIGE BOOK Wednesday, July 28, 2 p.m. EDT » The Federal Reserve will release its overview of regional economic activity ahead of its Aug. 10 monetary policy meeting. The consensus forecast among respondents to the latest Action Economics survey is for the Fed to raise interest rates by 25 basis points again, to 1.5%.

EMPLOYMENT COST INDEX

Thursday, July 29, 8:30 a.m. EDT » Compensation in the second quarter of 2004 probably increased by 1%, following a 1.1% gain in the first quarter.

GROSS DOMESTIC PRODUCT

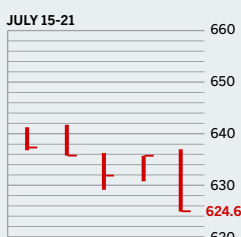
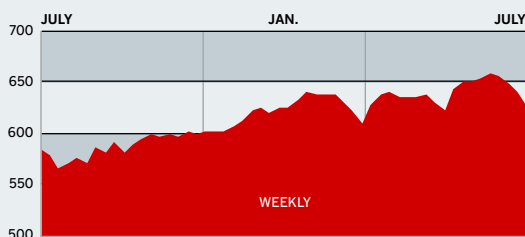
Friday, July 30, 8:30 a.m. EDT » The economy is forecast to have expanded by an annualized rate of 3.8% during the second quarter. In the first quarter, growth clocked in at 3.9%.

The *BusinessWeek* production index improved to 222.6 for the week ended July 10, an increase of 12% from the previous year. Before calculation of the four-week moving average, the index slipped to 223.

BusinessWeek online

For the BW50, more investment data, and the components of the production index visit www.businessweek.com/magazine/extra.htm

THE BUSINESSWEEK FIFTY



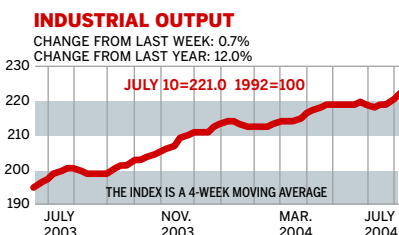
The BW50 sank 2.3%, as four out of five stocks on the list ended the week in the red. The bleeding ranged from medical-device-makers Stryker and St. Jude Medical, down 11.3% and 8.4%, to 3M, off 5.2%, to such former faves as Yahoo! and eBay, which plunged 8.3% and 8.6%. Cybersecurity outfit Symantec rose 6.3%; after the bell on July 21, it announced quarterly profits soared 122%.

COMPANY PERFORMANCE

RANK	COMPANY	% CHANGE		RANK	COMPANY	% CHANGE	
		WEEK	SINCE 3/1/04			WEEK	SINCE 3/1/04
1	Progressive	-5.9	-7.2	26	Procter & Gamble	-3.3	3.9
2	Cendant	-2.0	5.5	27	Yahoo!	-8.3	26.9
3	WellPoint Health Networks	0.0	4.1	28	Apache	-0.9	10.3
4	UnitedHealth Group	3.9	3.7	29	Sears, Roebuck	0.5	-25.7
5	Forest Laboratories	-6.6	-34.1	30	Stryker	-11.3	8.5
6	ACE	-6.8	-12.0	31	Sysco	-0.4	-10.7
7	Best Buy	-3.2	-10.6	32	Dollar General	0.5	-12.7
8	ConocoPhillips	-0.5	12.8	33	Bed Bath & Beyond	-1.1	-12.9
9	Lowe's	-5.5	-12.0	34	Quest Diagnostics	-2.4	-0.9
10	Electronic Arts	0.7	12.2	35	Nike	-1.5	-2.2
11	Pulte Homes	-1.7	-4.0	36	Devon Energy	-2.6	19.9
12	Centex	-5.3	-22.3	37	Intel	-3.5	-22.7
13	eBay	-8.6	11.5	38	Johnson Controls	5.6	-3.4
14	ChevronTexaco	-0.9	6.3	39	Staples	0.1	11.0
15	Symantec	6.3	5.1	40	American International Group	-3.9	-9.0
16	Dell	1.9	8.8	41	Ambac Financial Group	-1.9	-9.1
17	Qualcomm	-2.8	7.3	42	Express Scripts	-1.8	1.5
18	International Game Technology	-6.9	-13.6	43	Harley-Davidson	-3.6	14.2
19	MBNA	-1.1	-10.4	44	PepsiCo	-4.3	-1.5
20	Marathon Oil	-0.1	5.2	45	Burlington Resources	-0.8	27.0
21	St. Jude Medical	-8.4	-7.8	46	Carnival	-1.0	2.4
22	Home Depot	-2.8	-7.7	47	3M	-5.2	7.1
23	Exxon Mobil	-0.6	7.1	48	Apollo Group	-0.9	21.2
24	Johnson & Johnson	-0.3	3.4	49	KB Home	-2.0	-11.7
25	Starbucks	-0.7	22.0	50	Humana	1.6	-20.0

Data: Reuters

BW PRODUCTION INDEX



The production index climbed higher over the latest period. Before calculation of the four-week moving average, however, the index declined to 223, from 225.9. On a seasonally adjusted basis, auto and truck assemblies, along with electric-power production, were the only components to post gains. The timing of the July 4 holiday caused rail-freight traffic to fall significantly, followed by a sizable decline in lumber output and moderate declines among coal, crude-oil refining, and steel.

Information on each of the index components is at www.businessweek.com. BW production index Copyright 2004 by The McGraw-Hill Companies

ONLINE RESOURCES

BW50 Track the index and the companies in it all day long. Plus: our exclusive Info Tech 100 index.

BUSINESSWEEK INVESTING Real-time market coverage and investment tools in partnership with Standard & Poor's.

MUTUAL FUNDS Search for funds, view BW ratings, and read Q&As with fund managers.

COLUMNS Hot stocks, takeover plays, and the latest strategies for managing your money.

BusinessWeek online

For the BW50, more investment data, and the components of the production index visit www.businessweek.com/magazine/extra.htm