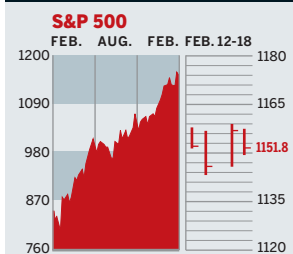


Personal Business Figures of the Week

STOCKS



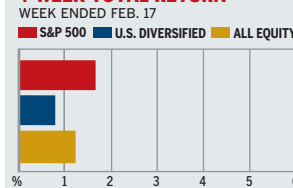
COMMENTARY

The U.S. stock market hit the skids during the week ended Feb. 18. Investors grew more circumspect about whether the recent strong earnings reports will continue, as well as the benefit of newly announced bank and media mergers. The release of weak homebuilding stats for January didn't help. The Dow, NASDAQ, and the S&P 500 all lost about a half-percent.

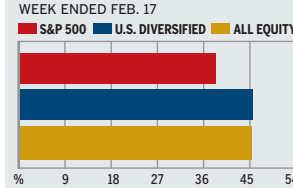
Data: Bloomberg Financial Markets, Reuters

MUTUAL FUNDS

4-WEEK TOTAL RETURN



52-WEEK TOTAL RETURN



Data: Standard & Poor's

U.S. MARKETS

	FEB. 18	WEEK	% CHANGE YEAR TO DATE	LAST 12 MONTHS
S&P 500	1151.8	-0.5	3.6	35.3
Dow Jones Industrials	10672.0	-0.6	2.1	32.7
NASDAQ Composite	2076.5	-0.6	3.6	54.2
S&P MidCap 400	605.8	0.0	5.2	48.5
S&P SmallCap 600	284.5	-0.8	5.2	53.3
Wilshire 5000	11,237.3	-0.5	4.1	39.6

SECTORS

	FEB. 18	WEEK	% CHANGE YEAR TO DATE	LAST 12 MONTHS
BusinessWeek 50*	637.8	-0.5	2.5	22.1
BW Info Tech 100**	363.3	-0.1	3.7	36.2
S&P/BARRA Growth	574.2	-0.6	3.3	30.5
S&P/BARRA Value	573.3	-0.4	3.9	40.3
S&P Energy	232.1	-0.4	3.6	30.4
S&P Financials	401.4	-0.1	5.7	41.0
S&P REIT	120.9	-2.1	4.4	39.0
S&P Transportation	192.8	-1.4	-4.5	20.2
S&P Utilities	121.4	0.2	2.6	35.3
GSTII Internet	146.4	-2.3	1.2	93.7
PSE Technology	745.3	-0.6	6.9	61.6

*Mar. 19, 1999=1000 **Feb. 7, 2000=1000

BEST-PERFORMING GROUPS

Group	Last Month %	Last 12 Months %
Wireless Services	23.2	138.6
Motorcycles	15.7	136.7
Agricultural Products	14.6	119.3
Health-Care Supplies	14.4	110.5
Oil & Gas Equipment	14.2	90.3
Divsfd. Metals & Mining		138.6
Internet Software		136.7
Wireless Services		119.3
Instrumentation		110.5
Fertilizers & Ag. Chems.		90.3

EQUITY FUND CATEGORIES

Category	4-Week Total Return %	52-Week Total Return %
LEADERS		
Real Estate	5.0	88.8
Europe	4.4	72.8
Precious Metals	4.0	66.9
Financial	3.6	63.8
LAGGARDS		
Technology	-4.4	25.4
Japan	-1.7	29.8
Small-cap Growth	-1.5	35.3
Mid-cap Growth	-0.1	35.7
Latin America		88.8
Diversified Emerg. Mkts.		72.8
Technology		66.9
Pacific/Asia ex-Japan		63.8
Domestic Hybrid		25.4
Miscellaneous		29.8
Utilities		35.3
Large-cap Blend		35.7

EQUITY FUNDS

Fund	4-Week Total Return %	52-Week Total Return %
LEADERS		
American Heritage	22.2	163.8
Henderson Europ. Focus A	11.0	158.7
Ivy Europ. Opps. A	10.2	151.8
U.S. Global Acc. E. Eurpn.	8.8	137.7
LAGGARDS		
ProFds. Smicdr. Ultsr. Inv.	-10.1	-61.3
Grand Prix A	-10.1	-61.3
Van Wagoner Emerging Gr.	-9.7	-50.6
Firsthand Tech. Value	-9.3	-50.6
Apex Mid Cap Growth		163.8
Reynolds		158.7
PFds. Ult. Sm. Cap Inv.		151.8
ProFds. Intnet. Ultsr. Inv.		137.7
Rydex Dynam. Vent. 100		-61.3
ProFunds UKSh. OTC Inv.		-61.3
ProFunds UltraBear Inv.		-50.6
Rydex Dyn. Tempest 500		-50.6

GLOBAL MARKETS

	FEB. 18	WEEK	% CHANGE YEAR TO DATE	LAST 12 MONTHS
S&P Euro Plus (U.S. Dollar)	1266.0	0.2	7.4	54.7
London (FT-SE 100)	4442.9	1.1	-0.8	19.1
Paris (CAC 40)	3709.0	0.8	4.2	26.2
Frankfurt (DAX)	4095.3	-0.7	3.3	49.5
Tokyo (NIKKEI 225)	10,676.8	3.0	0.0	22.8
Hong Kong (Hang Seng)	13,928.4	3.0	10.8	48.2
Toronto (S&P/TSX Composite)	8717.8	-0.6	6.0	32.2
Mexico City (IPC)	10,125.0	2.5	15.1	72.2

FUNDAMENTALS

	FEB. 17	WEEK AGO	YEAR AGO
S&P 500 Dividend Yield	1.52%	1.53%	1.87%
S&P 500 P/E Ratio (Trailing 12 mos.)	23.8	23.5	30.0
S&P 500 P/E Ratio (Next 12 mos.)*	18.5	18.4	15.1
First Call Earnings Revision*	0.72%	0.76%	-3.55%

*First Call Corp.

TECHNICAL INDICATORS

	FEB. 17	WEEK AGO	READING
S&P 500 200-day average	1031.7	1027.0	Positive
Stocks above 200-day average	89.0%	89.0%	Negative
Options: Put/call ratio	0.60	0.64	Neutral
Insiders: Vickers NYSE Sell/buy ratio	6.05	5.74	Negative

WORST-PERFORMING GROUPS

Group	Last Month %	Last 12 Months %
Employment Services	-13.0	-6.8
Communication Equip.	-10.6	2.2
Semiconductor Equip.	-10.5	2.9
Automobiles	-10.2	8.2
Broadcasting	-9.6	8.5
Photographic Products		-6.8
Health-Care Facilities		2.2
Trading Cos. & Distribs.		2.9
Brewers		8.2
Intgrd. Telecomms. Svcs.		8.5

INTEREST RATES

KEY RATES

	FEB. 18	WEEK AGO	YEAR AGO
Money Market Funds	0.60%	0.60%	0.90%
90-Day Treasury Bills	0.92	0.92	1.17
2-Year Treasury Notes	1.67	1.71	1.58
10-Year Treasury Notes	4.05	4.03	3.88
30-Year Treasury Bonds	4.91	4.90	4.82
30-Year Fixed Mortgage †	5.45	5.61	5.88

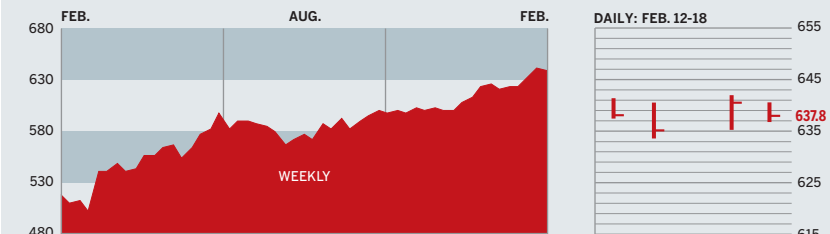
†BanxQuote, Inc.

BLOOMBERG MUNI YIELD EQUIVALENTS

Taxable equivalent yields on AAA-rated, tax-exempt municipal bonds, assuming a 30% federal tax rate.

	10-YR. BOND	30-YR. BOND
General Obligations	3.38%	4.33%
Taxable Equivalent	4.83	6.19
Insured Revenue Bonds	3.52	4.70
Taxable Equivalent	5.03	6.71

THE BUSINESSWEEK FIFTY



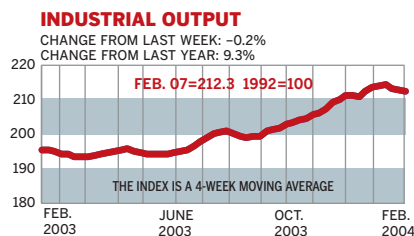
The BW50 fared no better than the broader market, down 0.5% for the week. Banks were among the stocks hit in the downslide, including Wells Fargo, U.S. Bancorp, and Washington Mutual. Tech and health-care stocks mostly held their own. Big gainers got a boost from new acquisitions, including interactive software developer Electronic Arts, up 2.7%, and First Data, up 3.7%.

COMPANY PERFORMANCE

RANK	COMPANY	WEEK	% CHANGE SINCE 3/1/03	RANK	COMPANY	WEEK	% CHANGE SINCE 3/1/03
1	Forest Laboratories	-2.5	48.6	26	U.S. Bancorp	-1.9	33.4
2	WellPoint Health Networks	-0.2	54.4	27	H&R Block	-0.8	48.4
3	UnitedHealth Group	1.5	45.5	28	Sysco	-0.8	40.3
4	Johnson & Johnson	-1.4	2.7	29	Procter & Gamble	-0.2	25.8
5	Progressive	0.7	60.5	30	eBay	-0.9	74.8
6	AmerisourceBergen	-0.2	3.5	31	Biomet	-1.9	31.3
7	Lowe's	-0.3	46.2	32	Exelon	1.1	36.0
8	Pfizer	-1.9	25.5	33	Kohl's	3.2	2.1
9	Dell Computer	1.3	26.6	34	Wachovia	0.2	34.2
10	St. Jude Medical	-2.1	60.7	35	3M	-2.1	27.1
11	Cardinal Health	-1.2	13.4	36	Harley-Davidson	-0.2	34.5
12	Bed Bath & Beyond	-2.2	25.6	37	Walgreen	-0.5	23.3
13	Washington Mutual	-0.2	30.1	38	Altria Group	0.3	42.6
14	United Parcel Service	-0.8	23.7	39	Mattel	2.4	-9.7
15	Microsoft	-1.4	13.0	40	AFLAC	1.0	31.6
16	Freddie Mac	1.2	17.7	41	Abbott Laboratories	0.0	25.2
17	Electronic Arts	2.7	76.7	42	First Data	3.7	15.4
18	International Game Technology	0.0	93.7	43	Dominion Resources	-0.7	17.7
19	Pulte Homes	0.2	83.5	44	Coca-Cola	-1.1	27.4
20	Merck	0.9	-1.8	45	Wrigley (Wm.) Jr.	-1.8	4.6
21	Medtronic	1.8	7.9	46	Wal-Mart Stores	0.2	19.0
22	PepsiCo	0.3	33.8	47	Quest Diagnostics	-3.5	55.8
23	Wells Fargo	-2.1	25.6	48	General Dynamics	-0.1	61.6
24	McKesson	0.8	7.8	49	Northrop Grumman	-0.1	19.7
25	Stryker	-0.8	38.3	50	Best Buy	-2.1	83.6

Data: Reuters

BW PRODUCTION INDEX



The production index declined for the third straight week. Before calculation of the four-week moving average, the index was also lower, falling to 211.2 from 211.9. On a seasonally adjusted basis, only electric-power production and rail-freight traffic were lower. The Association of American Railroads cited bad winter weather for the drop in rail traffic. Autos and steel showed the biggest gains, with coal, lumber, steel, crude-oil refining, and truck assemblies also higher over the period.

Information on each of the index components is at www.businessweek.com. BW production index Copyright 2004 by The McGraw-Hill Companies

ONLINE RESOURCES

BW50 Track the index and the companies in it all day long. Plus: our exclusive Info Tech 100 index.

BUSINESSWEEK INVESTING Real-time market coverage and investment tools in partnership with Standard & Poor's.

MUTUAL FUNDS Search for funds, view BW ratings, and read Q&As with fund managers.

COLUMNS Hot stocks, takeover plays, and the latest strategies for managing your money.

BusinessWeek online

For the BW50, more investment data, and the components of the production index visit www.businessweek.com/magazine/extra.htm

THE WEEK AHEAD

CONSUMER CONFIDENCE

Tuesday, Feb. 24, 10 a.m.
EST » The Conference Board's February confidence index most likely slid to 95 after the index jumped 5 points, to 96.8, in January. But an unexpected reversal in the University of Michigan's first look at February consumer sentiment suggests the confidence index will fall more than economists expect.

EXISTING HOME SALES

Wednesday, Feb. 25, 10 a.m.

EST » Existing home sales in January probably eased to an annual pace of 6.35 million, from 6.47 million in the previous month, says the median forecast of economists surveyed by Informa Global Markets.

DURABLE GOODS ORDERS

Thursday, Feb. 26, 8:30 a.m.
EST » New orders for durable goods are forecast to have increased 1% in February, following a 0.3% rise during January.

NEW RESIDENTIAL SALES

Thursday, Feb. 26, 10 a.m.
EST » New single-family home sales in January were probably little changed from the annual pace of 1.06 million in December.
GROSS DOMESTIC PRODUCT (REVISED) Friday, Feb. 27, 8:30 a.m.
EST » Revisions to the fourth-quarter economy will probably show growth at a 4% annual rate, unchanged from the advanced estimate.

The *BusinessWeek* production index fell to 213.2 for the week ended Feb. 7, but remains up 9.3% from the previous year. Before calculation of the four-week moving average, the index declined to 211.2

BusinessWeek online

For the BW50, more investment data, and the components of the production index visit www.businessweek.com/magazine/extra.htm