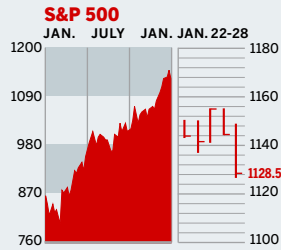


STOCKS



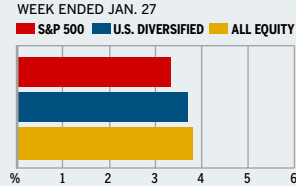
COMMENTARY

A tweak in the wording on monetary policy by Greenspan & Co. sent shivers through bourses on Jan. 28. 'Patience,' promised the Fed on holding rates low—so predictably investors rushed to the exits. Meanwhile, such bellwethers as Altria and AmEx reported strong quarterly profits and raised hopes for 2004. The major market measures, though, lost ground.

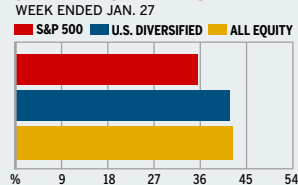
Data: Bloomberg Financial Markets, Reuters

MUTUAL FUNDS

4-WEEK TOTAL RETURN



52-WEEK TOTAL RETURN



Data: Standard & Poor's

U.S. MARKETS

	JAN. 28	WEEK	% CHANGE YEAR TO DATE	LAST 12 MONTHS
S&P 500	1128.5	-1.7	1.5	31.4
Dow Jones Industrials	10,468.4	-1.5	0.1	29.4
NASDAQ Composite	2077.4	-3.0	3.7	54.8
S&P MidCap 400	589.3	-1.9	2.3	42.1
S&P SmallCap 600	278.8	-1.9	3.1	47.3
Wilshire 5000	11,017.0	-1.7	2.0	35.3

SECTORS

	JAN. 27	WEEK AGO	% CHANGE YEAR AGO	LAST 12 MONTHS
BusinessWeek 50*	623.8	0.0	0.3	18.7
BW Info Tech 100**	361.1	-2.1	3.0	28.1
S&P/BARRA Growth	564.7	-1.1	1.6	28.7
S&P/BARRA Value	559.6	-2.2	1.4	34.3
S&P Energy	228.5	-0.6	2.0	33.0
S&P Financials	387.5	-1.6	2.0	32.3
S&P REIT	119.5	3.5	3.2	38.4
S&P Transportation	195.7	-1.1	-3.1	20.9
S&P Utilities	120.4	-0.9	1.7	26.4
GSTI Internet	148.8	-5.2	2.9	94.3
PSE Technology	729.1	-2.6	4.6	58.4

*Mar. 19, 1999=1000 **Feb. 7, 2000=1000

GLOBAL MARKETS

	JAN. 28	WEEK	% CHANGE YEAR TO DATE	LAST 12 MONTHS
S&P Euro Plus (U.S. Dollar)	1240.0	1.6	5.2	54.2
London (FT-SE 100)	4468.1	-1.0	-0.2	28.0
Paris (CAC 40)	3706.8	0.8	4.2	32.4
Frankfurt (DAX)	4150.2	0.3	4.7	55.4
Tokyo (NIKKEI 225)	10,852.5	-1.4	1.6	30.3
Hong Kong (Hang Seng)	13,431.8	1.3	-2.3	45.4
Toronto (S&P/TSX Composite)	8535.7	-1.0	3.8	29.9
Mexico City (IPC)	9551.1	1.3	8.6	61.3

FUNDAMENTALS

	JAN. 27	WEEK AGO	YEAR AGO
S&P 500 Dividend Yield	1.51%	1.53%	1.85%
S&P 500 P/E Ratio (Trailing 12 mos.)	27.4	28.0	26.6
S&P 500 P/E Ratio (Next 12 mos.)*	18.4	18.3	15.7
First Call Earnings Surprise*	5.36%	5.86%	3.35%

*First Call Corp.

TECHNICAL INDICATORS

	JAN. 27	WEEK AGO	READING
S&P 500 200-day average	1015.0	1008.2	Positive
Stocks above 200-day average	91.0%	91.0%	Negative
Options: Put/call ratio	0.65	0.56	Positive
Insiders: Vickers NYSE Sell/buy ratio	5.42	5.65	Negative

BEST-PERFORMING GROUPS

	LAST MONTH %	LAST 12 MONTHS %
Wireless Services	19.8	148.0
Instrumentation	18.8	105.2
Photographic Products	17.2	96.2
Communication Equipment	16.3	95.4
Tires & Rubber	13.5	86.3
Internet Software	14.8	105.2
Divsfd. Metals & Mining	10.5	96.2
Instrumentation	9.6	96.2
Semiconductors	9.5	95.4
Wireless Services	8.6	86.3

WORST-PERFORMING GROUPS

	LAST MONTH %	LAST 12 MONTHS %
Gold Mining	-12.5	-4.6
Aluminum	-9.9	-2.2
Specialty Appar. Retailers	-8.3	1.5
Divsfd. Metals & Mining	-8.2	4.7
Steel	-7.9	5.2
Photographic Products	-4.6	-4.6
Trading Cos. & Distribs.	-2.2	-2.2
Health-Care Facilities	1.5	1.5
Home Furnishings	4.7	4.7
Brewers	5.2	5.2

EQUITY FUND CATEGORIES

4-WEEK TOTAL RETURN	%	52-WEEK TOTAL RETURN	%
LEADERS			
Communications	10.4	Latin America	92.2
Latin America	9.5	Diversified Emerg. Mkts.	69.0
Pacific/Asia ex-Japan	7.6	Technology	68.3
Technology	7.4	Pacific/Asia ex-Japan	59.1
LAGGARDS			
Precious Metals	-6.5	Domestic Hybrid	24.0
Miscellaneous	1.2	Miscellaneous	27.1
Utilities	2.2	Utilities	29.5
Japan	2.3	International Hybrid	30.8

EQUITY FUNDS

4-WEEK TOTAL RETURN	%	52-WEEK TOTAL RETURN	%
LEADERS			
iShares Gold. Sachs Nwkg.	25.3	Apex Mid Cap Growth	164.3
Pfds. Wriss. Ulstr. Inv.	22.2	Reynolds	161.2
Fidelity Sel. Dev. Comms.	19.8	iShares MSCI Brazil Idx.	152.8
Reynolds	19.6	Pfds. Smicdr. Ulstr. Inv.	150.3
LAGGARDS			
Pfds. Pr. Mtls. Ustr. Inv.	-14.7	Rydex Dynam. Vent. 100	-63.3
Oppenheimer Gold & Spec. A	-8.4	ProFunds UHSt. OTC Inv.	-63.2
Rydex Precious Metals	-8.4	ProFunds UltraBear Inv.	-49.0
OCM Gold	-8.1	Rydex Dyn. Tempest 500	-49.0

INTEREST RATES

KEY RATES

	JAN. 28	WEEK AGO	YEAR AGO
Money Market Funds	0.61%	0.61%	0.96%
90-Day Treasury Bills	0.93	0.88	1.17
2-Year Treasury Notes	1.82	1.64	1.70
10-Year Treasury Notes	4.19	4.03	4.02
30-Year Treasury Bonds	5.00	4.91	4.91
30-Year Fixed Mortgage †	5.61	5.54	5.97

†BarxQuote, Inc.

BLOOMBERG MUNI YIELD EQUIVALENTS

Taxable equivalent yields on AAA-rated, tax-exempt municipal bonds, assuming a 30% federal tax rate.

	10-YR. BOND	30-YR. BOND
General Obligations	3.43%	4.47%
Taxable Equivalent	4.90	6.39
Insured Revenue Bonds	3.59	4.82
Taxable Equivalent	5.13	6.89

THE WEEK AHEAD

PERSONAL INCOME Monday, Feb. 2, 8:30 a.m. EST

Personal income in December is expected to have risen 0.2% after growing 0.5% in November. That's based on the median forecast of economists surveyed by Informa Global Markets. Consumer expenditures probably climbed 0.4% for a second straight month.

PURCHASING MANAGERS' INDEX Monday, Feb. 2, 10 a.m. EST

The Institute for Supply

Management's industrial activity January index probably stood at 61.8%, from a revised 63.4%.

VEHICLE SALES Tuesday, Feb. 3

Sales of U.S.-made and imported cars and light trucks in January very likely slowed to an annual pace of about 17 million, from 17.9 million during December.

PRODUCTIVITY & COSTS

Thursday, Feb. 5, 8:30 a.m. EST The rise in output per hour worked in the fourth quarter

probably slowed to a 3.2% annual rate, after a 9.4% surge in the third quarter. Unit labor costs probably fell 1.4%, following a 5.8% decline.

EMPLOYMENT Friday, Feb. 6, 8:30 a.m. EST

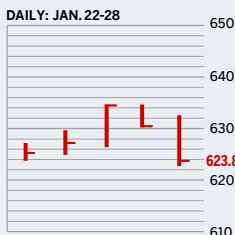
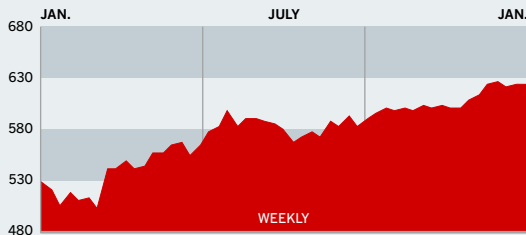
January nonfarm payrolls are forecast to have grown by 145,000, following a weak December gain of only 1,000 jobs. The unemployment rate most likely inched up to 5.8%, from 5.7%. Average hourly wages probably rose by 0.2%.

The BusinessWeek production index for the week ended Jan. 17 hit 214.3, up 9.9% from the previous year. Before calculation of the four-week moving average, the index was virtually unchanged at 213.

BusinessWeek online

For the BW50, more investment data, and the components of the production index visit www.businessweek.com/magazine/extra.htm

THE BUSINESSWEEK FIFTY



During a week when most major market indexes fell, the BW 50 managed to hold its ground, ending unchanged for the week ended Jan. 28. Helping the list was strong moves by such health-care outfits as Quest Diagnostics, Cardinal Health, and Merck, which rose 5.9%, 5.7%, and 3.3%, respectively. Meanwhile, Electronic Arts fell 3.4% on profit-taking.

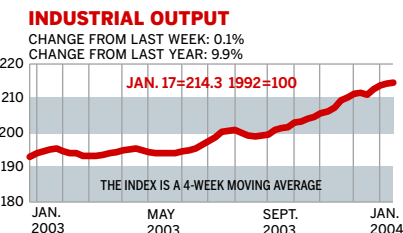
COMPANY PERFORMANCE

RANK	COMPANY	% CHANGE	
		WEEK	SINCE 3/1/03
1	Forest Laboratories	3.9	51.2
2	WellPoint Health Networks	1.0	49.2
3	UnitedHealth Group	1.6	43.2
4	Johnson & Johnson	1.1	1.3
5	Progressive	-3.6	57.8
6	AmerisourceBergen	0.1	1.5
7	Lowe's	-1.1	36.4
8	Pfizer	0.7	20.3
9	Dell Computer	-0.8	27.9
10	St. Jude Medical	3.1	50.0
11	Cardinal Health	5.7	10.5
12	Bed Bath & Beyond	-2.2	18.5
13	Washington Mutual	2.9	27.0
14	United Parcel Service	0.1	25.7
15	Microsoft	-2.3	16.6
16	Freddie Mac	-1.6	13.8
17	Electronic Arts	-3.4	74.8
18	International Game Technology	1.2	88.4
19	Pulte Homes	-5.2	70.0
20	Merck	3.3	-4.5
21	Medtronic	-2.7	7.6
22	PepsiCo	0.2	20.8
23	Wells Fargo	-1.5	25.7
24	McKesson	-6.2	8.7
25	Stryker	-0.4	35.9

RANK	COMPANY	% CHANGE	
		WEEK	SINCE 3/1/03
26	U.S. Bancorp	1.9	38.2
27	H&R Block	-0.5	43.4
28	Sysco	3.2	39.0
29	Procter & Gamble	-0.9	20.0
30	eBay	3.2	69.4
31	Biomet	-2.0	24.5
32	Exelon	-0.7	34.8
33	Kohl's	-1.6	-12.7
34	Wachovia	-1.8	30.4
35	3M	-2.5	27.1
36	Harley-Davidson	5.7	23.0
37	Walgreen	-0.9	22.5
38	Altria Group	2.5	43.2
39	Mattel	-2.7	-13.3
40	AFLAC	0.0	16.5
41	Abbott Laboratories	0.3	23.1
42	First Data	0.0	12.6
43	Dominion Resources	2.1	18.8
44	Coca-Cola	-0.7	22.8
45	Wrigley (Wm.) Jr.	0.4	6.7
46	Wal-Mart Stores	-0.4	10.8
47	Quest Diagnostics	5.9	56.2
48	General Dynamics	0.2	56.1
49	Northrop Grumman	-1.8	14.1
50	Best Buy	-4.4	76.4

Data: Reuters

BW PRODUCTION INDEX



The production index managed a small increase. Before calculation of the four-week moving average, the index was virtually unchanged at 213, from 213.1 the previous week. On a seasonally adjusted basis, lumber output had the biggest gain, followed by rail-freight traffic and much smaller increases in steel production and crude-oil refining. Among the decliners, auto and truck assemblies dropped the most. The electric power and coal components had more modest declines.

Information on each of the index components is at www.businessweek.com.
BW production index Copyright 2003 by The McGraw-Hill Companies

ONLINE RESOURCES

BW50 Track the index and the companies in it all day long. Plus: our exclusive Info Tech 100 index.

BUSINESSWEEK INVESTING Real-time market coverage and investment tools in partnership with Standard & Poor's.

MUTUAL FUNDS Search for funds, view BW ratings, and read Q&As with fund managers.

COLUMNS Hot stocks, takeover plays, and the latest strategies for managing your money.

BusinessWeek online

For the BW50, more investment data, and the components of the production index visit www.businessweek.com/magazine/extra.htm