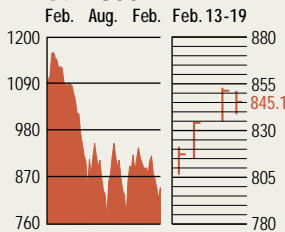


## STOCKS

### S&P 500

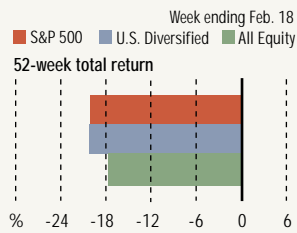
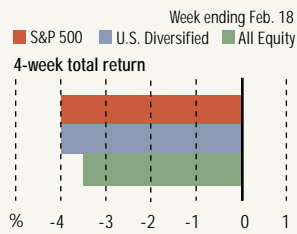


## COMMENTARY

Tech stocks, led by Dell Computer, delivered valentines to investors in a strong week for the market. Dell reported 35% higher earnings per share, helping lift the Nasdaq 4.3% and the S&P 500 3.2%. Intel, Microsoft, and Hewlett-Packard carried the momentum to the Dow, which gained 3.1% despite a bout of renewed war anxiety at week's end.

Data: Bloomberg Financial Markets, Reuters

## MUTUAL FUNDS



Data: Standard & Poor's

## U.S. MARKETS

	FEB. 19	WEEK	% CHANGE YEAR TO DATE	LAST 12 MONTHS
S&P 500	845.1	3.2	-3.9	-23.0
Dow Jones Industrials	8000.6	3.1	-4.1	-19.5
NASDAQ Composite	1334.3	4.3	-0.1	-24.9
S&P MidCap 400	404.1	1.7	-6.0	-18.9
S&P SmallCap 600	183.6	1.3	-6.6	-19.1
Wilshire 5000	7995.7	2.9	-4.2	-22.0

## SECTORS

	FEB. 19	WEEK	% CHANGE YEAR TO DATE	LAST 12 MONTHS
BusinessWeek 50*	518.4	2.9	-4.4	-20.9
BW Info Tech 100**	264.3	1.8	-7.4	-28.3
S&P/BARRA Growth	437.0	3.3	-2.6	-24.6
S&P/BARRA Value	405.5	3.2	-5.3	-21.8
S&P Energy	178.2	2.7	-2.7	-13.0
S&P Financials	283.3	4.0	-4.6	-15.6
S&P REIT	87.0	0.9	-4.2	-8.0
S&P Transportation	158.5	0.8	-6.7	-24.8
S&P Utilities	89.4	3.5	-8.6	-31.8
GST Internet	74.3	1.7	-0.5	-14.9
PSE Technology	458.0	4.2	-0.1	-28.5

\*Mar. 19, 1999 = 1000 \*\*Feb. 7, 2000 = 1000

## GLOBAL MARKETS

	FEB. 19	WEEK	% CHANGE YEAR TO DATE	LAST 12 MONTHS
S&P Euro Plus (U.S. Dollar)	801.2	2.7	-5.1	-18.0
London (FT-SE 100)	3658.3	1.2	-7.2	-27.2
Paris (CAC 40)	2859.2	3.2	-6.7	-32.6
Frankfurt (DAX)	2624.7	2.1	-9.3	-45.1
Tokyo (NIKKEI 225)	8678.4	0.2	1.2	-11.8
Hong Kong (Hang Seng)	9427.6	1.2	1.1	-12.3
Toronto (S&P/TSX Composite)	6559.7	1.7	-0.8	-11.7
Mexico City (IPC)	5857.4	1.6	-4.4	-11.0

## FUNDAMENTALS

	FEB. 18	WK. AGO	YR. AGO
S&P 500 Dividend Yield	1.87%	1.93%	1.44%
S&P 500 P/E Ratio (Trailing 12 mos.)	30.0	29.2	59.0
S&P 500 P/E Ratio (Next 12 mos.)*	15.1	15.0	20.1
First Call Earnings Revision*	-3.55%	-2.43%	-0.91%

\*First Call Corp.

## TECHNICAL INDICATORS

	FEB. 18	WK. AGO	READING
S&P 500 200-day average	919.6	924.6	Negative
Stocks above 200-day average	31.0%	29.0%	Positive
Options: Put/call ratio	0.82	0.94	Positive
Insiders: Vickers NYSE Sell/buy ratio	2.06	2.09	Neutral

## BEST-PERFORMING GROUPS

Group	LAST MONTH %	LAST 12 MONTHS %
Comptr. Stge. & Perphs.	10.9	23.4
Distillers & Vintners	8.8	20.0
Internet Software	5.3	5.5
Leisure Products	4.0	5.3
Office Electronics	3.9	5.1

## EQUITY FUND CATEGORIES

Category	4-WEEK TOTAL RETURN %	52-WEEK TOTAL RETURN %
<b>LEADERS</b>		
Real Estate	0.3	32.6
Natural Resources	0.3	0.3
Technology	-1.9	-1.8
Domestic Hybrid	-2.1	-4.3
<b>LAGGARDS</b>		
Utilities	-5.4	-33.6
Latin America	-5.0	-25.8
Financial	-5.0	-25.2
Small-cap Value	-5.0	-23.7

## EQUITY FUNDS

Fund	4-WEEK TOTAL RETURN %	52-WEEK TOTAL RETURN %
<b>LEADERS</b>		
Oppenheimer Real Asset A	8.2	53.2
ProFunds UltraBear Inv.	7.2	51.3
Rydex Dynam. Tmpst. 500	7.1	46.2
Third Millennium Russia	6.9	44.8
<b>LAGGARDS</b>		
Perkins Opportunity	-20.7	-69.6
Frontier Equity	-19.1	-67.6
Ameristock Focused Value	-13.7	-58.9
ING Mid Cap Value A	-12.9	-57.7

## WORST-PERFORMING GROUPS

Group	LAST MONTH %	LAST 12 MONTHS %
Multi-Utilities	-29.2	-68.8
Tires & Rubber	-21.2	-67.6
Photographic Products	-19.5	-57.9
Advertising	-19.4	-51.8
Multi-line Insurers	-17.4	-51.5

## INTEREST RATES

### KEY RATES

	FEB. 19	WEEK AGO	YEAR AGO
<b>MONEY MARKET FUNDS</b>	0.90%	0.91%	1.57%
<b>90-DAY TREASURY BILLS</b>	1.17	1.16	1.75
<b>2-YEAR TREASURY NOTES</b>	1.58	1.60	2.97
<b>10-YEAR TREASURY NOTES</b>	3.88	3.91	4.89
<b>30-YEAR TREASURY BONDS</b>	4.82	4.84	5.39
<b>30-YEAR FIXED MORTGAGE †</b>	5.88	5.90	6.76

†BancQuote, Inc.

## BLOOMBERG MUNI YIELD EQUIVALENTS

Taxable equivalent yields on AAA-rated, tax-exempt municipal bonds, assuming a 30% federal tax rate.

	10-YR. BOND	30-YR. BOND
<b>GENERAL OBLIGATIONS</b>	3.81%	4.68%
<b>TAXABLE EQUIVALENT</b>	5.44	6.69
<b>INSURED REVENUE BONDS</b>	3.95	4.91
<b>TAXABLE EQUIVALENT</b>	5.64	7.01

## THE WEEK AHEAD

**EXISTING HOME SALES** Tuesday, Feb. 25, 10 a.m. EST ► Existing home sales in January are forecast to have eased to an annual rate of 5.75 million, from a pace of 5.86 million in December. That's based on the median forecast of economists surveyed by MMS International.

**CONSUMER CONFIDENCE** Tuesday, Feb. 25, 10 a.m. EST ► The Conference Board's February confidence index most likely declined to 77.3, from 79 in January.

**DURABLE GOODS ORDERS** Thursday, Feb. 27, 8:30 a.m. EST ► New orders for durable

goods are expected to have risen 0.5% in January. In December, orders fell 0.2%.

**NEW RESIDENTIAL SALES** Thursday, Feb. 27, 10 a.m. EST ► New single-family home sales for January most likely stood at an annual rate of 1.03 million. In December, sales climbed to a rate of 1.08 million homes. Home sales should stay strong with mortgage rates easing further.

**GROSS DOMESTIC PRODUCT (REVISION)** Friday, Feb. 28, 8:30 a.m. EST ► The MMS survey expects that the Commerce Dept.'s second

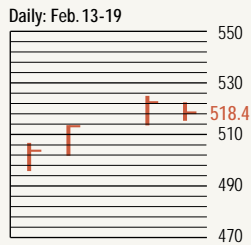
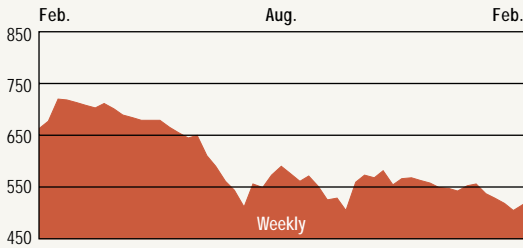
look at fourth-quarter economic activity will show real GDP grew by an annual rate of 1.3%, up from an initial level of 0.7%.

The BusinessWeek production index declined in the week ended Feb. 8 to 194.2, but was up 4.4% from a year ago. More complete information is available at [www.businessweek.com](http://www.businessweek.com).

**BusinessWeek** online

For the BW 50, more investment data, and the components of the production index visit [www.businessweek.com](http://www.businessweek.com)

## THE BUSINESSWEEK FIFTY



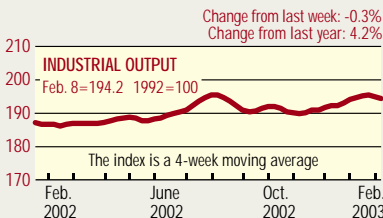
**THE BW 50** rebounded and gained the 2.9% lost the week before. All but four stocks rose. Several sectors showed big gains. Distressed energy company Dynegy jumped 9.9% to \$2 on news of asset sales. Semiconductor equipment maker KLA-Tencor gained 8.1% in the updraft of tech stocks. Citigroup, Cardinal Health, First Data, and house builder Centex gained more than 6%.

### COMPANY PERFORMANCE

RANK	COMPANY	% CHANGE		RANK	COMPANY	% CHANGE	
		WEEK	SINCE 3/1/02			WEEK	SINCE 3/1/02
1	Johnson & Johnson	5.1	-13.7	26	Tenet Healthcare	0.6	-54.5
2	Freddie Mac	1.9	-13.0	27	Household International	3.2	-46.3
3	Pfizer	1.2	-29.0	28	WellPoint Health Networks	2.5	8.7
4	MBNA	-9.5	-37.3	29	Washington Mutual	3.2	9.8
5	Altria	0.2	-28.8	30	Duke Energy	1.6	-59.8
6	KLA-Tencor	8.1	-40.2	31	Kohl's	2.3	-23.7
7	Fannie Mae	3.0	-17.0	32	Bed Bath & Beyond	2.5	-0.5
8	Lowe's	2.2	-22.7	33	Cardinal Health	6.6	-12.1
9	Best Buy	2.8	-39.1	34	Centex	6.1	-3.8
10	AmerisourceBergen	-0.8	-19.7	35	American Electric Power	4.3	-52.6
11	UnitedHealth Group	2.1	13.0	36	Golden West Financial	1.6	17.1
12	Exelon	5.5	0.3	37	Stryker	3.9	4.6
13	Home Depot	3.0	-56.3	38	Harley-Davidson	2.8	-19.1
14	Wal-Mart Stores	1.9	-21.4	39	PepsiCo	4.3	-20.7
15	Dynegy	9.9	-92.2	40	Merck	1.9	-11.4
16	General Dynamics	1.2	-27.9	41	Apache	5.3	21.0
17	ConocoPhillips	3.4	-16.3	42	Amerada Hess	0.2	-36.0
18	Forest Laboratories	-1.6	21.1	43	KB Home	4.1	7.9
19	Block (H&R)	4.7	-25.4	44	First Data	6.1	-15.2
20	Calpine	-11.4	-63.0	45	Tyco International	4.4	-47.6
21	Occidental Petroleum	0.6	8.0	46	International Game Technology	1.7	12.4
22	Sysco	1.8	-2.4	47	Capital One Financial	3.7	-37.4
23	Pulte Homes	5.8	0.8	48	Electronic Data Systems	4.9	-72.4
24	Marathon Oil	1.8	-19.7	49	Nabors Industries	1.6	7.6
25	Citigroup	6.2	-21.4	50	Xcel Energy	2.9	-53.7

Data: Reuters

### BW PRODUCTION INDEX



The **production index** finished the week lower. Before calculation of the four-week moving average, the index showed a slight improvement to 193.3, from 193.1. On a seasonally adjusted basis, autos suffered a second sharp drop with February light vehicle sales expected to weaken further. Electric power production also declined. Lumber posted the biggest gain, followed by more moderate increases in steel, coal, crude-oil refining, and rail-freight traffic. Truck assemblies were up marginally.

Information on each of the index components is at [www.businessweek.com](http://www.businessweek.com)  
 BW production index Copyright 2003 by The McGraw-Hill Companies

### ONLINE RESOURCES

**BW 50** Track the index and the companies in it all day long. Plus: our exclusive Info Tech 100 index.

**BUSINESSWEEK INVESTING** Real-time market coverage and investment tools in partnership with Standard & Poor's.

**MUTUAL FUNDS** Search for funds, view BW ratings, and read Q&A's with fund managers.

**COLUMNS** Hot stocks, takeover plays, and the latest strategies for managing your money.

**BusinessWeek** online

For more investment data and the components of the production index, visit [www.businessweek.com](http://www.businessweek.com)