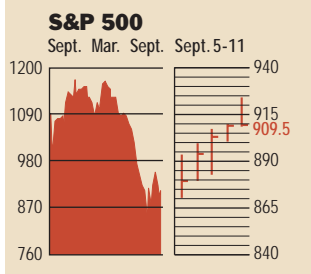


Stocks



COMMENTARY

After three straight days of gains, stocks fell slightly lower on September 11, a reflection of the light trading volume and somber mood that marked Wall Street on the anniversary of the terrorist attacks on America. The release of the Fed's Beige Book repeated forecasts for slow growth. For the week, the Dow Jones Industrials rose 1.9%, and the S&P 500 and Nasdaq, added 1.8%.

Data: Bloomberg Financial Markets
Reuters

U.S. MARKETS

	Sept. 11	% change		
		Year to date	Last 12 months	
S&P 500	909.5	1.8	-20.8	-16.8
Dow Jones Industrials	8581.2	1.9	-14.4	-10.7
Nasdaq Composite	1315.5	1.8	-32.6	-22.4
S&P MidCap 400	445.5	1.6	-12.4	-4.6
S&P SmallCap 600	202.4	1.6	-12.8	-3.7
Wilshire 5000	8610.8	1.7	-19.6	-14.8

SECTORS

	Sept. 11	% change		
		Year to date	Last 12 months	
BusinessWeek 50*	570.9	1.8	-21.8	-21.3
BusinessWeek Info Tech 100**	277.1	2.6	-33.9	-20.9
S&P/BARRA Growth	468.1	1.8	-21.3	-15.1
S&P/BARRA Value	438.2	1.8	-20.6	-19.1
S&P Energy	185.8	2.7	-12.1	-15.5
S&P Financials	306.4	0.3	-13.8	-8.5
S&P REIT	95.7	-0.3	2.4	3.4
S&P Transportation	170.4	-1.9	-13.5	-8.8
S&P Utilities	101.9	-2.7	-30.2	-39.8
GSTI Internet	70.0	7.2	-33.3	-20.1
PSE Technology	452.6	3.3	-34.2	-22.8

*Mar. 19, 1999 = 1000 **Feb. 7, 2000 = 1000

BEST-PERFORMING GROUPS

Group	Last month %	Last 12 months %
Broadcasting	29.7	50.6
Home Improvement Stores	19.7	49.9
Movies & Entertainment	17.1	45.2
Specialty Appar. Retailers	14.0	39.7
Advertising	13.5	23.5

EQUITY FUND CATEGORIES

Category	4-week total return %	52-week total return %
Leaders		
Precious Metals	11.0	61.4
Communications	7.5	10.2
Latin America	5.9	9.8
Small-cap Growth	4.9	5.9
Laggards		
Japan	-4.7	-39.1
Diversified Pacific/Asia	-3.2	-33.1
Foreign	-1.6	-28.3
Europe	-1.4	-23.8

EQUITY FUNDS

Fund	4-week total return %	52-week total return %
Leaders		
Fidelity Select Telecomms.	24.6	98.2
Fidelity Adv. Lvgd. Co. T	18.4	83.5
Fidelity Select Multimedia	18.3	83.4
Jundt Opportunity B	17.6	81.3
Laggards		
Frontier Equity	-17.4	-62.8
ProFunds UltraShort OTC	-13.2	-61.6
Rydex Dynam. Venture 100	-13.2	-59.6
World GenomicsFund.com	-10.5	-57.2

Data: Standard & Poor's

THE WEEK AHEAD

BUSINESS INVENTORIES Monday, Sept. 16, 8:30 a.m. EDT ► Inventories in July most likely increased 0.2% for the second straight month. That's according to the median forecast of economists surveyed by Standard & Poor's MMS, a division of The McGraw-Hill Companies.

INDUSTRIAL PRODUCTION Tuesday, Sept. 17, 9:15 a.m. EDT ► Factory output in August probably held steady, after a 0.2% rise in July. The average operating rate most likely eased to 76%, from 76.1% in July.

CONSUMER PRICE INDEX Wednesday, Sept. 18, 8:30 a.m. EDT ► Consumer prices for goods and services are forecast to have risen 0.2% in August, following a 0.1% increase in July. Excluding the food and energy components, core inflation probably grew by a similar 0.2%.

INTERNATIONAL TRADE Wednesday, Sept. 18, 8:30 a.m. EDT ► The trade deficit probably expanded slightly to \$37.5 billion in July, from \$37.2 billion in June. Higher oil prices are lifting imports.

NEW RESIDENTIAL CONSTRUCTION Thursday, Sept. 19, 8:30 a.m. EDT ► Housing starts in August are expected to have remained unchanged from July's annual rate of 1.65 million homes.

FEDERAL BUDGET Friday, Sept. 20, 2 p.m. EDT ► The U.S. Treasury probably ran up a \$54.4 billion deficit in August, most likely increasing the fiscal year 2002 gap to over \$200 billion. In August, 2001, the budget deficit was \$80 billion, inflated by tax rebate checks.

GLOBAL MARKETS

	Sept. 11	% change		
		Year to date	Last 12 months	
S&P Euro Plus (U.S. Dollar)	881.6	4.3	-18.5	-8.1
London (FT-SE 100)	4210.7	4.6	-19.3	-13.8
Paris (CAC 40)	3397.0	7.2	-26.5	-17.4
Frankfurt (DAX)	3584.7	4.6	-30.5	-17.3
Tokyo (NIKKEI 225)	9400.1	3.6	-10.8	-2.2
Hong Kong (Hang Seng)	9882.4	0.6	-13.3	4.1
Toronto (TSE 300)	6618.3	1.5	-13.9	-6.1
Mexico City (IPC)	6260.6	2.4	-1.8	13.2

FUNDAMENTALS

	Sept. 10	Wk. ago	Yr. ago
S&P 500 Dividend Yield	1.71%	1.76%	1.42%
S&P 500 P/E Ratio (Trailing 12 mos.)	32.1	31.2	30.1
S&P 500 P/E Ratio (Next 12 mos.)*	16.1	15.5	19.5
First Call Earnings Revision*	-1.19%	-1.61%	-2.45%

*First Call Corp.

TECHNICAL INDICATORS

	Sept. 10	Wk. ago	Reading
S&P 500 200-day average	1057.5	1063.7	Negative
Stocks above 200-day average	36.0%	30.0%	Positive
Options: Put/call ratio	0.77	0.84	Positive
Insiders: Vickers NYSE Sell/buy ratio	1.06	1.20	Positive

WORST-PERFORMING GROUPS

Group	Last month %	Last 12 months %
Internet Software	-10.4	-84.7
Tires & Rubber	-9.3	-66.5
Constr. & Engineering	-8.9	-48.9
Aluminum	-8.9	-43.7
Forest Products	-8.8	-43.0

Interest Rates

KEY RATES

	Sept. 11	Week ago	Year ago
MONEY MARKET FUNDS	1.38%	1.39%	3.27%
90-DAY TREASURY BILLS	1.67	1.62	3.26
2-YEAR TREASURY NOTES	2.17	2.00	3.53
10-YEAR TREASURY NOTES	4.06	3.96	4.84
30-YEAR TREASURY BONDS	4.88	4.80	5.43
30-YEAR FIXED MORTGAGE†	6.21	6.12	6.89

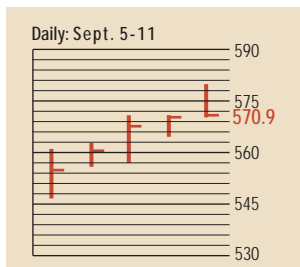
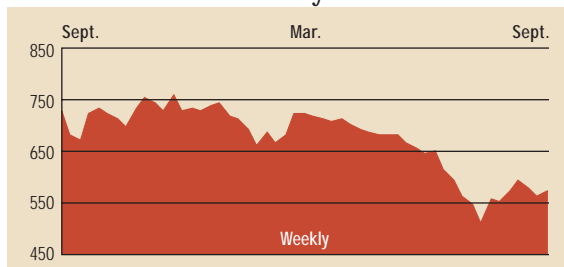
†BancQuote, Inc.

BLOOMBERG MUNI YIELD EQUIVALENTS

Taxable equivalent yields on AAA-rated, tax-exempt municipal bonds, assuming a 30% federal tax rate.

	10-yr. bond	30-yr. bond
GENERAL OBLIGATIONS	3.58%	4.72%
TAXABLE EQUIVALENT	5.11	6.74
INSURED REVENUE BONDS	3.76	4.93
TAXABLE EQUIVALENT	5.37	7.04

The BusinessWeek Fifty

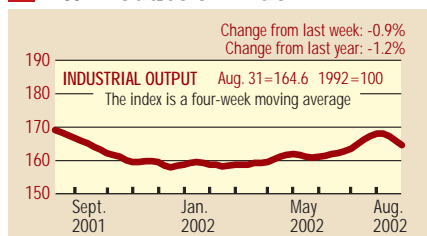


The BW 50 kept up with the market, rising 1.8% for the week. Driving the performance were such retailers as Best Buy, which soared 21.7%, and Bed Bath & Beyond, up 10.0%, on analyst upgrades. Tyco International climbed 12% on September 11 and 14.2% for the week, after announcing that it had hired a new CFO. The energy companies dragged down the list, with Dynegy and Calpine sinking 21.7% and 21.2%, respectively.

COMPANY PERFORMANCE

Rank	Company	% change		Rank	Company	% change	
		Week	Since 3/1/02			Week	Since 3/1/02
1	Johnson & Johnson	2.1	-8.9	26	Tenet Healthcare	8.4	28.7
2	Freddie Mac	0.8	0.0	27	Household International	3.0	-31.2
3	Pfizer	-4.4	-24.7	28	WellPoint Health Networks	6.0	26.6
4	MBNA	8.5	-7.2	29	Washington Mutual	-3.0	11.9
5	Philip Morris	0.1	-9.2	30	Duke Energy	-8.3	-34.0
6	KLA-Tencor	6.5	-42.3	31	Kohl's	5.8	7.2
7	Fannie Mae	1.1	-3.7	32	Bed Bath & Beyond	10.0	4.4
8	Lowe's	6.8	-0.3	33	Cardinal Health	4.5	1.1
9	Best Buy	21.7	-44.7	34	Centex	2.9	-12.9
10	AmerisourceBergen	-0.9	4.4	35	American Electric Power	-6.3	-31.6
11	UnitedHealth Group	2.2	22.4	36	Golden West Financial	-2.8	2.5
12	Exelon	2.2	-7.4	37	Stryker	4.4	-4.4
13	Home Depot	1.8	-33.6	38	Harley-Davidson	1.7	-4.4
14	Wal-Mart Stores	3.2	-12.9	39	PepsiCo	4.3	-22.0
15	Dynegy	-21.7	-93.4	40	Merck	0.9	-19.2
16	General Dynamics	6.1	-11.4	41	Apache	5.5	7.4
17	ConocoPhillips	1.5	-11.3	42	Amerada Hess	0.5	2.4
18	Forest Laboratories	6.5	-3.3	43	KB Home	7.5	17.7
19	Block (H&R)	0.2	1.7	44	First Data	1.5	-15.4
20	Calpine	-21.2	-47.5	45	Tyco International	14.2	-39.2
21	Occidental Petroleum	3.2	10.6	46	International Game Technology	3.8	-1.1
22	Sysco	7.3	3.4	47	Capital One Financial	15.4	-16.8
23	Pulte Homes	2.9	-6.7	48	Electronic Data Systems	5.3	-31.5
24	Marathon Oil	4.5	-7.7	49	Nabors Industries	10.2	-5.8
25	Citigroup	-0.5	-28.9	50	Xcel Energy	-0.7	-63.0

BW Production Index



The production index suffered another drop. Before calculation of the four-week moving average, the index retreated to 162.7, from 164. On a seasonally adjusted basis, autos showed the largest decline, followed by drops in electric power, truck assemblies, and steel production. The biggest increase came in coal, with smaller gains in rail-freight traffic, lumber, and crude-oil refining. The production index for August fell to 165.4, from 167.4 for all of July.

Information on each of the index components is at www.businessweek.com. BW production index Copyright 2002 by The McGraw-Hill Companies.

Online Resources

BW 50 Track the index and the companies in it all day long. Plus: our exclusive Info Tech 100 index.

BUSINESSWEEK INVESTING Real-time market coverage and investment tools in partnership with Standard & Poor's.

MUTUAL FUNDS Search for funds, view BW ratings, and read Q&A's with fund managers.

COLUMNS Hot stocks, takeover plays, and the latest strategies for managing your money.

BusinessWeek online

For more investment data and the components of the production index, visit www.businessweek.com.