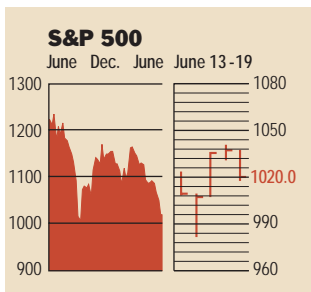


Stocks



COMMENTARY

Stocks seasawed once again this week as investors reacted to any shred of news, good or bad. On June 17, shares rose strongly on news that McDonald's expects to exceed its profit forecast. Two days later, though, equities fell just as sharply on lowered forecasts by AMD and Apple. For the week, the S&P 500 was unchanged, while the Dow and Nasdaq lost 0.6% and 1.5%.

Data: Bloomberg Financial Markets
Reuters

U.S. MARKETS	June 19	% change		
		Week	Year to date	Last 12 months
S&P 500	1020.0	0.0	-11.2	-15.9
Dow Jones Industrials	9561.6	-0.6	-4.6	-9.8
Nasdaq Composite	1496.8	-1.5	-23.3	-24.9
S&P MidCap 400	502.9	0.8	-1.1	-0.3
S&P SmallCap 600	232.1	0.5	0.0	5.8
Wilshire 5000	9658.2	0.0	-9.8	-13.7

SECTORS	June 19	% change		
		Week	Year to date	Last 12 months
BusinessWeek 50*	649.7	0.8	-11.0	-23.1
BusinessWeek Info Tech 100**	307.0	-3.4	-26.8	-31.4
S&P/BARRA Growth	510.7	-0.7	-14.1	-15.5
S&P/BARRA Value	506.5	0.6	-8.2	-16.7
S&P Energy	212.2	0.2	0.4	-12.0
S&P Financials	345.7	2.1	-2.7	-8.0
S&P REIT	100.8	-0.2	7.9	8.6
S&P Transportation	198.4	-1.7	0.7	3.7
S&P Utilities	126.8	1.7	-13.1	-33.2
GSTI Internet	79.3	2.3	-24.4	-33.1
PSE Technology	535.6	-1.3	-22.1	-23.6

*Mar. 19, 1999 = 1000 **Feb. 7, 2000 = 1000

BEST-PERFORMING GROUPS	Last month %	Last 12 months %	
		Group	%
Managed Health Care	8.4	Metal & Glass Containers	65.8
Health-Care Facilities	8.0	Homebuilding	59.2
Health-Care Supplies	7.2	Managed Health Care	56.1
Divsfd. Metals & Mining	4.1	Air Freight & Couriers	49.5
Homebuilding	3.3	Housewares & Specialties	41.1

GLOBAL MARKETS	June 19	% change		
		Week	Year to date	Last 12 months
S&P Euro Plus (U.S. Dollar)	991.9	-0.7	-8.3	-12.5
London (FT-SE 100)	4652.4	-4.1	-10.8	-18.4
Paris (CAC 40)	3935.6	-1.7	-14.9	-23.9
Frankfurt (DAX)	4354.8	-3.4	-15.6	-25.9
Tokyo (NIKKEI 225)	10,476.2	-7.5	-0.6	-17.3
Hong Kong (Hang Seng)	10,673.1	-4.3	-6.4	-17.4
Toronto (TSE 300)	7247.8	-1.5	-5.7	-5.9
Mexico City (IPC)	6691.0	-1.6	5.0	5.2

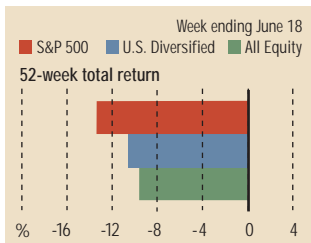
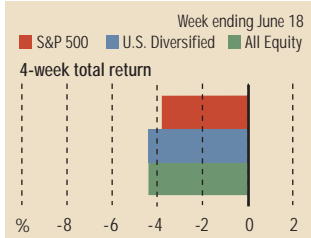
FUNDAMENTALS	June 18	Wk. ago	Yr. ago
S&P 500 P/E Ratio (Trailing 12 mos.)	44.0	42.2	28.1
S&P 500 P/E Ratio (Next 12 mos.)*	18.3	17.9	21.5
First Call Earnings Revision*	-0.68%	-0.50%	-5.11%

*First Call Corp.

TECHNICAL INDICATORS	June 18	Wk. ago	Reading
Stocks above 200-day average	64.0%	63.0%	Neutral
Options: Put/call ratio	0.88	0.86	Positive
Insiders: Vickers NYSE Sell/buy ratio	4.10	3.88	Negative

WORST-PERFORMING GROUPS	Last month %	Last 12 months %	
		Group	%
Wireless Services	-39.5	Multi-Utilities	-79.4
Semiconductors	-30.4	Wireless Services	-69.7
Advertising	-29.8	Computer Stge. & Perphs.	-62.7
Semiconductor Equipment	-26.5	Telecomms. Equipment	-48.5
Instrumentation	-23.6	Application Software	-47.9

Mutual Funds



Data: Standard & Poor's

EQUITY FUND CATEGORIES

4-week total return	%	52-week total return	%
Leaders		Leaders	
Real Estate	2.5	Precious Metals	66.7
Financial	-1.9	Real Estate	15.1
Domestic Hybrid	-2.1	Small-cap Value	9.1
International Hybrid	-2.6	Diversified Emerging Mkts.	6.9
Laggards		Laggards	
Latin America	-10.6	Communications	-38.6
Technology	-10.0	Technology	-34.4
Communications	-9.7	Utilities	-22.5
Japan	-7.1	Health	-21.3

EQUITY FUNDS

4-week total return	%	52-week total return	%
Leaders		Leaders	
Rydex Dynamic Vent. 100	19.1	U.S. Glob. Wld. Prec. Mins.	103.9
ProFunds UltraShort OTC	19.0	First Eagle SoGen Gold	98.4
Rydex Arktos Investor	9.6	U.S. Global Investors Gold	95.8
Potomac OTC Short	9.5	Van Eck Intl. Invs. Gold A	89.0
Laggards		Laggards	
Black Oak Emerging Tech.	-22.7	ProFunds UltraOTC Inv.	-63.4
ProFunds UltraOTC Inv.	-18.9	Black Oak Emerging Tech.	-63.2
Kopp Emerging Gr. Retail	-17.7	Van Wagoner Post Venture	-62.0
Van Wagoner Post Venture	-17.0	Van Wagoner Technology	-60.4

Interest Rates

KEY RATES	June 19	Week ago	Year ago
MONEY MARKET FUNDS	1.51%	1.51%	3.96%
90-DAY TREASURY BILLS	1.70	1.72	3.48
2-YEAR TREASURY NOTES	2.77	3.03	3.98
10-YEAR TREASURY NOTES	4.73	4.96	5.21
30-YEAR TREASURY BONDS	5.39	5.54	5.66
30-YEAR FIXED MORTGAGE†	6.55	6.71	7.16

†BanxQuote, Inc.

BLOOMBERG MUNI YIELD EQUIVALENTS

Taxable equivalent yields on AAA-rated, tax-exempt municipal bonds, assuming a 30% federal tax rate.

	10-yr. bond	30-yr. bond
GENERAL OBLIGATIONS	4.09%	4.98%
TAXABLE EQUIVALENT	5.84	7.11
INSURED REVENUE BONDS	4.25	5.15
TAXABLE EQUIVALENT	6.07	7.36

THE WEEK AHEAD

FOMC MEETING *Tuesday, June 25, 9 a.m. EDT* ► The Federal Reserve Board's Open Market Committee meets for two days to set monetary policy. Economists surveyed by Standard & Poor's MMS, a division of The McGraw-Hill Companies, unanimously expect the Fed to leave the federal funds rate at 1.75%.

CONSUMER CONFIDENCE *Tuesday, June 25, 10 a.m. EDT* ► The Conference Board's June confidence index is forecast to have slipped back to 107.8, from 109.8 in

May. That's based on the median forecast of economists surveyed by S&P's MMS.

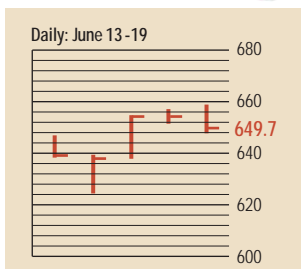
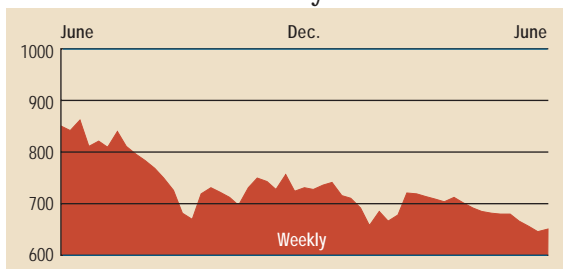
EXISTING HOME SALES *Tuesday, June 25, 10 a.m. EDT* ► Sales of existing homes in May probably slipped 1.7%, to an annual pace of 5.69 million.

DURABLE GOODS ORDERS *Wednesday, June 26, 8:30 a.m. EDT* ► New orders for durable goods most likely increased by 0.3% during May. In April, they climbed 1.5%.

NEW RESIDENTIAL SALES *Wednesday, June 26, 10 a.m. EDT* ► New single-family home sales in May are expected to have remained unchanged from April, at an annual pace of 915,000 homes.

PERSONAL INCOME *Friday, June 28, 8:30 a.m. EDT* ► Personal income for May probably increased 0.3%, while consumer spending most likely rose by just 0.1%. In April, income rose by a similar 0.3%, but consumer purchases grew by a more significant 0.5%.

The BusinessWeek Fifty

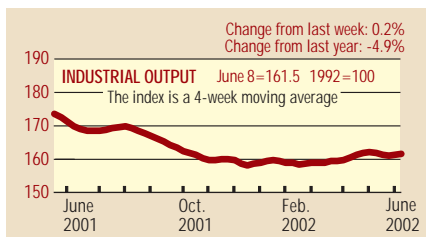


The BW 50 rose up against the trend of the rest of the market, advancing 0.8% for the week ended June 19. Leading the gainers was Tyco International, which soared 52.7% after receiving regulatory approval for its CIT spin-off. Among the climbers was energy provider Calpine, which added 13.4%. Best Buy fell 10.3% for the week after announcing second quarter earnings would be off by a couple of pennies.

COMPANY PERFORMANCE

Rank	Company	% change		Rank	Company	% change	
		Week	Since 3/1/02			Week	Since 3/1/02
1	Johnson & Johnson	-1.5	-7.4	26	Tenet Healthcare	2.6	35.2
2	Freddie Mac	1.7	2.3	27	Household International	-1.8	0.1
3	Pfizer	2.1	-12.7	28	WellPoint Health Networks	2.0	41.8
4	MBNA	1.3	-3.3	29	Washington Mutual	0.1	15.0
5	Philip Morris	-2.2	4.3	30	Duke Energy	9.0	-7.0
6	KLA-Tencor	-3.4	-18.1	31	Kohl's	-1.0	8.9
7	Fannie Mae	1.8	0.2	32	Bed Bath & Beyond	-2.7	3.0
8	Lowe's	-4.5	0.3	33	Cardinal Health	3.7	-2.7
9	Best Buy	-10.3	-13.8	34	Centex	5.3	-3.2
10	AmerisourceBergen	4.7	21.5	35	American Electric Power	1.9	-4.6
11	UnitedHealth Group	0.3	34.2	36	Golden West Financial	-1.3	7.9
12	Exelon	2.0	10.1	37	Stryker	3.2	-11.8
13	Home Depot	-1.1	-24.7	38	Harley-Davidson	-0.5	1.8
14	Wal-Mart Stores	-1.5	-7.4	39	PepsiCo	0.4	2.7
15	Dynegy	5.1	-69.6	40	Merck	1.1	-14.3
16	General Dynamics	4.0	18.3	41	Apache	3.9	5.0
17	Phillips Petroleum	2.1	-3.8	42	Amerada Hess	0.2	12.7
18	Forest Laboratories	2.5	-9.5	43	KB Home	1.8	15.3
19	Block (H&R)	-1.4	-8.5	44	First Data	-2.5	-1.9
20	Calpine	13.4	19.7	45	Tyco International	52.7	-46.7
21	Occidental Petroleum	2.6	11.1	46	International Game Technology	-0.2	-13.2
22	Sysco	3.4	-6.7	47	Capital One Financial	3.0	19.2
23	Pulte Homes	5.6	8.2	48	Electronic Data Systems	-1.8	-18.0
24	Marathon Oil	3.5	-2.5	49	Nabors Industries	3.6	7.6
25	Citigroup	2.1	-7.0	50	Xcel Energy	-7.4	-21.3

BW Production Index



The production index managed to increase for a second consecutive week. Before calculation of the four-week moving average, the index rose to 162.5, from 162. After seasonal adjustments, the components were evenly split. Lumber posted the biggest increase, followed by electric power production, autos, and rail freight traffic. Drops in crude-oil refining and coal output were the biggest drags on the index. Truck assemblies and steel also declined.

Information on each of the index components is at www.businessweek.com. BW production index Copyright 2002 by The McGraw-Hill Companies

Online Resources

BW 50 Track the index and the companies in it all day long. Plus: our exclusive Info Tech 100 index.

BUSINESSWEEK INVESTING Real-time market coverage and investment tools in partnership with Standard & Poor's.

MUTUAL FUNDS Search for funds, view BW ratings, and read Q&A's with fund managers.

COLUMNS Hot stocks, takeover plays, and the latest strategies for managing your money.

BusinessWeek online

For more investment data and the components of the production index, visit www.businessweek.com.