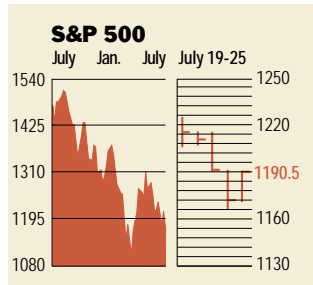


Stocks



COMMENTARY

The market ended the week on a positive note as the Dow rose nearly 165 points, or 1.6%, on July 25, while the S&P 500 index and Nasdaq jumped 1.6% and 1.3%, respectively. The rise came on light volume. For those who follow the technical indicators, investors remain cautious in the face of weak earnings reports. The good news? The quarter is coming to a close.

Data: Bloomberg Financial Markets
Bridge Information Systems, Inc.

U.S. MARKETS

	July 25	Week	Year to date	Last 12 months
S&P 500	1190.5	-1.4	-9.8	-19.3
Dow Jones Industrials	10,405.7	-1.6	-3.5	-2.8
Nasdaq Composite	1984.3	-1.6	-19.7	-50.8
S&P MidCap 400	499.4	-1.3	-3.4	0.3
S&P SmallCap 600	223.0	-1.0	1.5	6.1
Wilshire 5000	11,009.3	-1.6	-9.6	-20.1

SECTORS

	July 25	Week	Year to date	Last 12 months
BusinessWeek 50*	808.6	-1.5	-16.6	-36.6
BusinessWeek Info Tech 100**	426.1	-0.2	-24.7	-56.1
S&P/BARRA Growth	598.1	-1.2	-13.0	-33.9
S&P/BARRA Value	592.9	-1.7	-6.8	-1.3
S&P Energy	872.3	3.4	-6.4	7.8
S&P Financials	153.4	-2.7	-6.9	5.4
S&P REIT	92.3	-1.0	5.0	8.7
S&P Transportation	697.7	-5.7	0.0	13.9
S&P Utilities	281.6	-6.5	-19.7	1.7
GSTI Internet	111.2	-5.0	-38.8	-75.3
PSE Technology	658.5	-1.0	-19.2	-39.4

*Mar. 19, 1999 = 1000 **Feb. 7, 2000 = 1000

BEST-PERFORMING GROUPS

	Last month %	Last 12 months %
Furnishings & Appliances	12.4	Homebuilding 85.8
Long-Dist. Telecomms.	11.9	Tobacco 76.1
Metal & Glass Containers	11.0	Savings & Loans 68.2
Genl. Merchandise Chains	10.7	Pollution Control 64.4
Heavy-Duty Trucks	10.5	Hospital Management 62.3

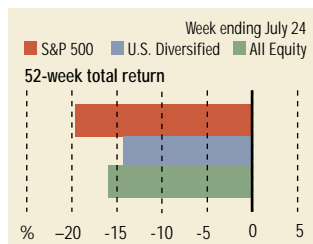
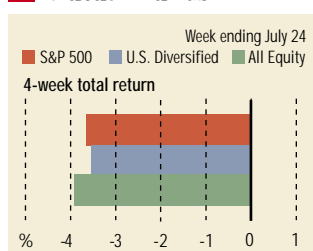
EQUITY FUND CATEGORIES

4-week total return %	52-week total return %
Leaders	Leaders
Small-cap Value 0.2	Small-cap Value 19.9
Real Estate -0.4	Financial 19.4
Miscellaneous -0.8	Mid-cap Value 17.3
Small-cap Blend -1.0	Precious Metals 14.6
Laggards	Laggards
Technology -9.6	Technology -56.4
Japan -9.3	Communications -55.2
Natural Resources -8.9	Japan -35.8
Diversified Emerging Mkts. -7.9	Large-cap Growth -33.3

EQUITY FUNDS

4-week total return %	52-week total return %
Leaders	Leaders
Potomac Internet Short 19.6	Potomac Internet Short 162.7
ProFunds UltraShort OTC 13.9	CGM Focus 104.1
CGM Focus 11.0	ProFunds UltraShort OTC 103.7
Ameristock Focused Value 9.6	Rydex Arktos Investor 82.2
Laggards	Laggards
Van Wagoner Mid Cap Gr. -22.1	Hudson Investors -96.2
Potomac Internet Plus -21.1	ProFunds UltraOTC Inv. -89.0
Berkshire Focus -20.8	Jacob Internet -82.9
Berkshire Technology -20.6	Berkshire Focus -80.6

Mutual Funds



Data: Standard & Poor's

GLOBAL MARKETS

	July 25	Week	Year to date	Last 12 months
S&P Euro Plus (U.S. Dollar)	1091.0	-0.8	-23.4	-29.1
London (FT-SE 100)	5275.7	-2.4	-15.2	-17.4
Paris (CAC 40)	4773.2	-1.9	-19.5	-26.5
Frankfurt (DAX)	5582.8	-2.5	-13.2	-23.5
Tokyo (NIKKEI 225)	11,891.6	-2.0	-13.7	-27.9
Hong Kong (Hang Seng)	12,214.1	-2.3	-19.1	-30.7
Toronto (TSE 300)	7623.8	0.0	-14.7	-29.8
Mexico City (IPC)	6411.5	0.4	13.4	-4.5

FUNDAMENTALS

	July 24	Wk. ago	Yr. ago
S&P 500 Dividend Yield	1.33%	1.29%	1.08%
S&P 500 P/E Ratio (Trailing 12 mos.)	29.0	28.4	30.0
S&P 500 P/E Ratio (Next 12 mos.)*	21.0	21.5	23.4
First Call Earnings Surprise*	0.96%	1.86%	4.04%

*First Call Corp.

TECHNICAL INDICATORS

	July 24	Wk. ago	Reading
S&P 500 200-day average	1281.6	1287.5	Negative
Stocks above 200-day average	59.0%	66.0%	Neutral
Options: Put/call ratio	0.73	0.66	Positive
Insiders: Vickers Sell/buy ratio	3.91	3.82	Negative

WORST-PERFORMING GROUPS

	Last month %	Last 12 months %
Entertainment	-15.1	Communications Equip. -78.7
Engineering & Constr.	-15.0	Semiconductors -57.3
Oil & Gas Drilling	-15.0	Computer Systems -50.9
Invest. Banking/Brkrge.	-13.1	Long-Dist. Telecomms. -48.9
Property-Casualty Insurers	-13.0	Metal & Glass Containers -48.4

Interest Rates

KEY RATES	July 25	Week ago	Year ago
MONEY MARKET FUNDS	3.59%	3.69%	6.15%
90-DAY TREASURY BILLS	3.54	3.54	6.20
1-YEAR TREASURY BILLS	3.46	3.57	6.06
10-YEAR TREASURY NOTES	5.17	5.12	6.04
30-YEAR TREASURY BONDS	5.58	5.52	5.81
30-YEAR FIXED MORTGAGE†	7.01	7.08	8.19

†BanxQuote, Inc.

BLOOMBERG MUNI YIELD EQUIVALENTS

Taxable equivalent yields on AAA-rated, tax-exempt municipal bonds, assuming a 31% federal tax rate.

	10-yr. bond	30-yr. bond
GENERAL OBLIGATIONS	4.32%	5.06%
TAXABLE EQUIVALENT	6.26	7.33
INSURED REVENUE BONDS	4.44	5.27
TAXABLE EQUIVALENT	6.43	7.64

THE WEEK AHEAD

PERSONAL INCOME *Tuesday, July 31, 8:30 a.m. EDT* ► Personal income probably rose 0.2% in June, while consumer spending likely grew by 0.3%. That's according to the median forecast of economists surveyed by Standard & Poor's MMS, a unit of The McGraw-Hill Companies. In May, personal income also advanced by 0.2%, and spending jumped by 0.5%.

CONSUMER CONFIDENCE *Tuesday, July 31, 10 a.m. EDT* ► The Conference Board's July index of consumer confidence is ex-

pected to inch up to 118, from a June reading of 117.9.

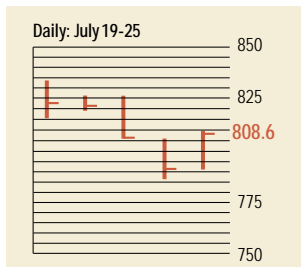
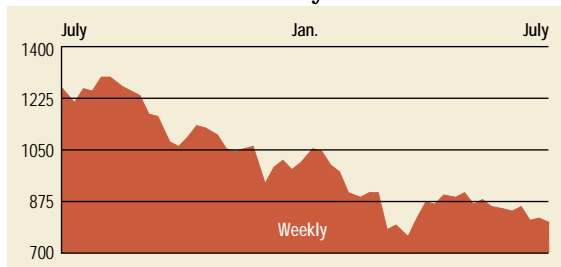
PURCHASING MANAGERS' INDEX *Wednesday, Aug. 1, 10 a.m. EDT* ► The National Association of Purchasing Management's July index of industrial activity probably rose to 45%, from 44.7%.

CONSTRUCTION SPENDING *Wednesday, Aug. 1, 10 a.m. EDT* ► Building outlays in June are expected to advance 0.3% for the second consecutive month.

FACTORY INVENTORIES *Thursday, Aug. 2, 10 a.m. EDT* ► Manufacturing inventories likely fell for a fifth consecutive month, down 0.4%, after falling 0.3% in May.

EMPLOYMENT *Friday, Aug. 3, 8:30 a.m. EDT* ► Nonfarm payrolls likely fell by 50,000 jobs in July, with a loss of 75,000 in manufacturing. June payrolls fell by 114,000, with 113,000 cuts coming in manufacturing. The July unemployment rate probably hit 4.6%, with the average workweek holding at 34.3 hours.

The BusinessWeek Fifty

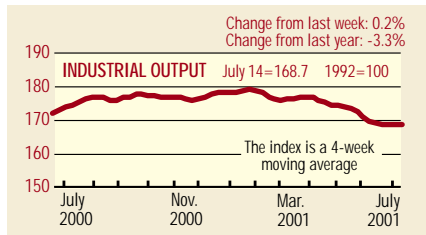


The BW 50 kept pace with the broader markets, falling 1.5%. But the damage was confined to individual stocks, rather than sectors. Cable set-top maker Scientific-Atlanta lost a third of its value, as it lowered profit forecasts for 2002, and credit-card issuer Provident sank 20.4%. Sun Microsystems shone brightly, rising 11.0% for the week.

COMPANY PERFORMANCE

Rank	Company	% change		Rank	Company	% change	
		Week	Since 3/1/01			Week	Since 3/1/01
1	Tyco International	-2.7	-5.5	26	Verizon Communications	-0.7	15.3
2	Anadarko Petroleum	15.2	-12.3	27	Citigroup	-2.5	1.4
3	Calpine	-13.8	-19.6	28	Sun Microsystems	11.0	-22.6
4	Dynegy	-0.5	-3.1	29	Merck	-3.8	-18.5
5	Applied Materials	0.5	-3.4	30	El Paso	-5.7	-30.8
6	Provident Financial	-20.4	-5.0	31	Altera	-5.5	9.0
7	Occidental Petroleum	4.3	12.1	32	Marsh & McLennan	-1.2	-7.2
8	Apache	11.3	-14.7	33	Household International	-3.9	14.3
9	Kerr-McGee	2.4	-7.5	34	Chevron	2.7	2.7
10	Oracle	2.6	-9.9	35	SBC Communications	-1.6	-4.7
11	Lehman Brothers Holdings	-2.3	6.7	36	Mercury Interactive	4.4	-39.5
12	EMC	0.7	-57.7	37	AOL Time Warner	-2.0	-0.6
13	AES	-4.1	-36.0	38	Washington Mutual	-5.8	19.3
14	Forest Laboratories	-6.4	13.2	39	General Dynamics	-1.1	19.4
15	FleetBoston Financial	-4.0	-9.2	40	Comcast	-4.1	-17.3
16	Micron Technology	0.3	6.9	41	Morgan Stanley Dean Witter	-3.0	-10.2
17	Xilinx	-7.3	-12.0	42	Tellabs	4.0	-61.3
18	Amerada Hess	4.3	2.7	43	Exxon Mobil	0.0	3.5
19	Duke Energy	-11.3	-9.4	44	Scientific-Atlanta	-33.2	-48.4
20	ADC Telecommunications	-14.0	-54.4	45	U.S. Bancorp	-5.9	-4.3
21	Capital One Financial	-4.9	11.6	46	Paychex	-6.5	-1.0
22	Phillips Petroleum	4.7	3.9	47	Merrill Lynch	0.1	-12.8
23	Analog Devices	11.1	5.3	48	Bed Bath & Beyond	-1.1	28.2
24	EOG Resources	8.1	-22.4	49	Texas Instruments	5.0	-2.4
25	Cardinal Health	-1.4	7.8	50	Teradyne	-2.0	0.3

BW Production Index



The production index rose for the first time since the first week of April. Before calculation of the four-week moving average, the index climbed from 168.2 to 169.2. After seasonal adjustments, auto and truck assemblies were up slightly, as the model year changeovers were completed. In addition, lumber rebounded strongly, while electric output and rail-freight traffic also increased. Crude-oil refining dropped sharply, with steel and coal production also falling.

Information on each of the index components is at www.businessweek.com. BW production index Copyright 2000 by The McGraw-Hill Companies

Online Resources

BW 50 Track the index and the companies in it all day long. Plus: our exclusive Info Tech 100 index.

BUSINESSWEEK INVESTING Real-time market coverage and investment tools in partnership with Standard & Poor's.

MUTUAL FUNDS Search for funds, view BW ratings, and read Q&A's with fund managers.

COLUMNS Hot stocks, takeover plays, and the latest strategies for managing your money.

BusinessWeek online

For more investment data and the components of the production index, visit www.businessweek.com.