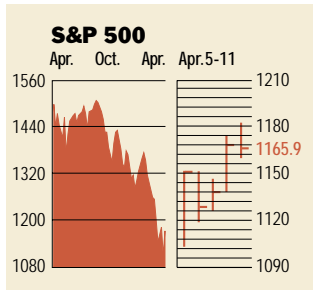


Stocks



COMMENTARY

Happy days are here—for now, anyway. The market roared back this week, making up for some of its losses. The Nasdaq spiked 15.9%, led by a surge in chip stocks. But Wall Street pundits remain wary on whether the worst is over yet. The Dow rose 5.2%, but the earnings' outlook for the second half of 2001 remains fuzzy.

Data: Bloomberg Financial Markets
Bridge Information Systems, Inc.

U.S. MARKETS

	Apr. 11	Week	Year to date	Last 12 months
S&P 500	1165.9	5.7	-11.7	-22.3
Dow Jones Industrials	10,013.5	5.2	-7.2	-11.3
Nasdaq Composite	1899.0	15.9	-23.1	-53.2
S&P MidCap 400	467.0	7.7	-9.6	-1.7
S&P SmallCap 600	204.4	6.0	-6.9	0.8
Wilshire 5000	10,688.3	6.2	-12.2	-23.5

SECTORS

	Apr. 11	Week	Year to date	Last 12 months
BusinessWeek 50*	815.7	8.1	-15.9	-37.8
BusinessWeek Info Tech 100**	448.7	16.0	-20.7	-55.6
S&P/BARRA Growth	569.4	6.5	-17.2	-37.4
S&P/BARRA Value	595.2	5.0	-6.4	-4.1
S&P Energy	888.0	4.9	-4.7	5.5
S&P Financials	147.1	4.9	-10.7	6.6
S&P REIT	84.3	-1.4	-4.2	10.2
S&P Transportation	696.9	1.4	-0.1	14.3
S&P Utilities	325.8	2.8	-7.1	32.2
GSTI Internet	117.9	29.9	-35.1	-78.0
PSE Technology	676.3	14.5	-17.0	-38.8

*Mar. 19, 1999 = 1000 **Feb. 7, 2000 = 1000

BEST-PERFORMING GROUPS

Group	Last month %	Last 12 months %
Aluminum	6.8	Tobacco 110.1
Metal & Glass Containers	3.8	Savings & Loans 84.1
Hospital Management	3.1	Engineering & Constr. 78.2
Life Insurance	2.5	Pollution Control 73.8
Invest. Banking/Brkrge.	2.3	Hospital Management 60.3

GLOBAL MARKETS

	Apr. 11	Week	Year to date	Last 12 months
S&P Euro Plus (U.S. Dollar)	1214.1	4.7	-14.8	-19.0
London (FT-SE 100)	5788.1	4.6	-7.0	-8.9
Paris (CAC 40)	5361.5	5.7	-9.5	-14.1
Frankfurt (DAX)	5951.2	6.3	-7.5	-20.0
Tokyo (NIKKEI 225)	13,174.9	-0.5	-4.4	-36.8
Hong Kong (Hang Seng)	12,706.4	1.0	-15.8	-23.3
Toronto (TSE 300)	7712.7	4.0	-13.7	-17.6
Mexico City (IPC)	5999.4	7.6	6.1	-17.1

FUNDAMENTALS

	Apr. 10	Wk. ago	Yr. ago
S&P 500 Dividend Yield	1.35%	1.42%	1.12%
S&P 500 P/E Ratio (Trailing 12 mos.)	24.3	23.0	31.7
S&P 500 P/E Ratio (Next 12 mos.)*	20.3	19.1	24.7
First Call Earnings Surprise*	1.76%	2.46%	8.19%

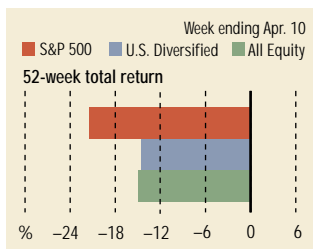
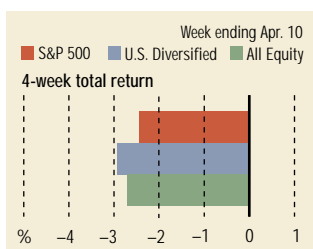
TECHNICAL INDICATORS

	Apr. 10	Wk. ago	Reading
S&P 500 200-day average	1366.0	1374.3	Negative
Stocks above 200-day average	57.0%	52.0%	Neutral
Options: Put/call ratio	0.83	0.86	Positive
Insiders: Vickers Sell/buy ratio	3.40	3.24	Negative

WORST-PERFORMING GROUPS

Group	Last month %	Last 12 months %
Communications Equip.	-19.4	Communications Equip. -74.4
Medical Products	-16.1	Instrumentation -67.6
Health-Care Services	-15.4	Semiconductors -60.6
Oil-Well Equip. & Svcs.	-14.7	Long-Dist. Telecomms. -59.0
Soft Drinks	-13.9	Metal & Glass Containers -57.7

Mutual Funds



Data: Standard & Poor's

EQUITY FUND CATEGORIES

Category	4-week total return %	52-week total return %	
Leaders		Leaders	
Japan	6.5	Natural Resources	20.6
Utilities	0.9	Financial	19.7
Natural Resources	-0.7	Real Estate	16.9
International Hybrid	-0.8	Mid-cap Value	14.1
Laggards		Laggards	
Technology	-7.4	Communications	-49.1
Communications	-7.2	Technology	-48.6
Pacific/Asia ex-Japan	-6.5	Japan	-41.6
Diversified Emerging Mkts.	-5.9	Diversified Pacific/Asia	-38.4

EQUITY FUNDS

Fund	4-week total return %	52-week total return %	
Leaders		Leaders	
CGM Focus	11.5	Schroder Cap. Micro Cap	85.7
Credit Suisse Warb. P. Jap. Gr.	10.8	CGM Focus	69.6
T Rowe Price Japan	10.2	ProFunds UltraBear Inv.	60.1
C.S. Warb. P. Jap. Sm. Co.	9.5	State St. Res. Glob. Res. A	60.0
Laggards		Laggards	
Firsthand Communications	-20.5	Amerindo Technology D	-76.6
Red Oak Technology Select	-19.3	Apex Mid Cap Growth	-76.2
Nevis	-18.9	Firsthand Communications	-74.1
Monument EuroNet A	-17.4	First American Tech. Y	-73.9

Interest Rates

Instrument	Apr. 11	Week ago	Year ago
KEY RATES			
MONEY MARKET FUNDS	4.87%	4.93%	5.58%
90-DAY TREASURY BILLS	4.06	4.10	5.83
1-YEAR TREASURY BILLS	4.09	3.97	6.17
10-YEAR TREASURY NOTES	5.12	4.94	5.97
30-YEAR TREASURY BONDS	5.61	5.50	5.84
30-YEAR FIXED MORTGAGE†	7.06	6.98	8.18
†BanxQuote, Inc.			
BLOOMBERG MUNI YIELD EQUIVALENTS			
Taxable equivalent yields on AAA-rated, tax-exempt municipal bonds, assuming a 31% federal tax rate.			
	10-yr. bond	30-yr. bond	
GENERAL OBLIGATIONS	4.40%	5.12%	
TAXABLE EQUIVALENT	6.38	7.42	
INSURED REVENUE BONDS	4.49	5.33	
TAXABLE EQUIVALENT	6.51	7.72	

THE WEEK AHEAD

CONSUMER PRICE INDEX *Tuesday, Apr. 17, 8:30 a.m. EDT* ► Consumer prices for goods and services were probably up 0.2% in March. That is the median forecast of economists surveyed by Standard & Poor's MMS, a unit of The McGraw-Hill Companies. Excluding food and energy, the core index likely rose by 0.2%.

HOUSING STARTS *Tuesday, Apr. 17, 8:30 a.m. EDT* ► Housing starts in March likely slipped to an annual rate of 1.62 million, from 1.65 million in February.

INDUSTRIAL PRODUCTION *Tuesday, Apr. 17, 9:15 a.m. EDT* ► Industrial output in March is expected to fall 0.1% after declining 0.6% in February. The average operating rate probably slipped to 79.2% from 79.4%. The expected output drop would be the smallest since September.

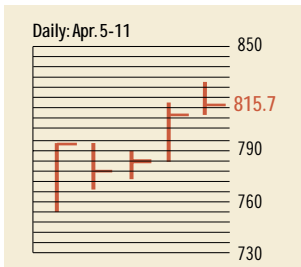
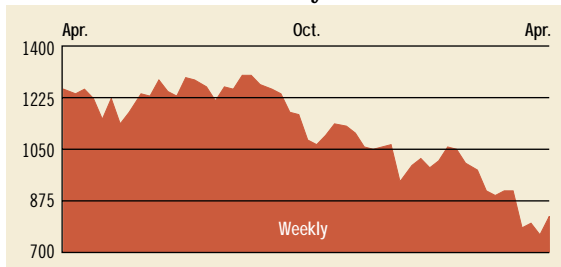
INTERNATIONAL TRADE *Wednesday, Apr. 18, 8:30 a.m. EDT* ► The February trade deficit in goods and services probably narrowed to \$33 billion from \$33.3 billion in January. Based on the S&P MMS

survey, both imports and exports fell in February, reversing their gains of January.

LEADING INDICATORS *Wednesday, Apr. 18, 10 a.m. EDT* ► The Conference Board's index of leading indicators probably fell 0.2% in March after slipping 0.2% in February.

FEDERAL BUDGET *Thursday, Apr. 19, 2 p.m. EDT* ► The U. S. Treasury is expected to report a March deficit of \$30 billion after a February deficit of \$48.2 billion.

The BusinessWeek Fifty



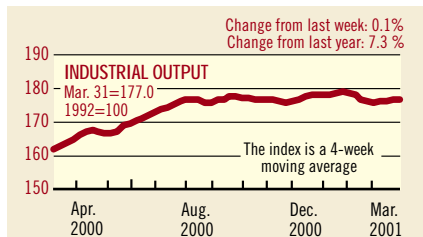
The BW50 was the hot place to be this week. An 8.1% gain bested the S&P 500 and the Dow. All but two companies turned in positive results. Headliners included Altera, which rose 37.2% on analyst upgrades and a surge in semiconductors. Mercury Interactive jumped 39.1% on strong first quarter results. The bad news: Tellabs' pre-announced for the second time that its first-quarter earnings would disappoint. The stock slid 10.8%.

COMPANY PERFORMANCE

Rank	Company	% change	
		Week	Since 3/1/00
1	Tyco International	9.0	-16.1
2	Anadarko Petroleum	8.2	0.8
3	Calpine	2.0	15.2
4	Dynegy	6.7	11.3
5	Applied Materials	21.7	1.5
6	Provident Financial	6.3	-3.6
7	Occidental Petroleum	4.5	9.8
8	Apache	9.6	-1.1
9	Kerr-McGee	4.8	5.1
10	Oracle	13.7	-27.3
11	Lehman Brothers Holdings	18.7	-3.7
12	EMC	19.5	-24.9
13	AES	10.8	-10.7
14	Forest Laboratories	9.5	-12.3
15	FleetBoston Financial	9.4	-3.8
16	Micron Technology	20.2	15.9
17	Xilinx	29.1	-5.5
18	Amerada Hess	5.9	10.7
19	Duke Energy	1.9	2.8
20	ADC Telecommunications	10.9	-32.7
21	Capital One Financial	14.9	7.8
22	Phillips Petroleum	4.6	5.6
23	Analog Devices	25.8	-5.3
24	EOG Resources	8.9	-2.3
25	Cardinal Health	-0.5	-7.4

Rank	Company	% change	
		Week	Since 3/1/00
26	Verizon Communications	3.2	4.1
27	Alza	4.5	11.4
28	Citigroup	8.5	-4.7
29	Sun Microsystems	17.7	-18.7
30	Merck	3.6	-3.3
31	El Paso	5.7	-7.2
32	Altera	37.2	6.8
33	Marsh & McLennan	1.0	-13.9
34	Household International	3.6	3.7
35	Chevron	3.5	4.6
36	SBC Communications	-6.3	-9.5
37	Mercury Interactive	39.1	-24.8
38	AOL Time Warner	17.2	-6.4
39	Washington Mutual	4.8	6.2
40	General Dynamics	6.2	0.8
41	Comcast	3.5	-5.9
42	Morgan Stanley Dean Witter	27.4	-9.4
43	Tellabs	-10.8	-23.7
44	Exxon Mobil	4.1	0.7
45	Scientific-Atlanta	30.8	2.3
46	U.S. Bancorp	1.1	-1.1
47	Paychex	1.7	-5.2
48	Merrill Lynch	17.2	1.0
49	Bed Bath & Beyond	10.8	8.8
50	Texas Instruments	22.8	4.9

BW Production Index



The production index was up in the latest week. Before calculation of the four-week moving average, the index rose from 176.7 to 177.6. After seasonal adjustments, autos, trucks, coal, and rail-freight traffic were up. For the month of March, the index stood at 177.0, up from 176.0 in February. Due to a computer error, the index has been revised back through January, 2001. To request the new data, please e-mail business_outlook@businessweek.com.

Information on each of the index components is at www.businessweek.com. BW production index Copyright 2000 by The McGraw-Hill Companies

Online Resources

BW 50 Track the index and the companies in it all day long. Plus: our exclusive Info Tech 100 index.

BUSINESSWEEK INVESTING Real-time market coverage and investment tools in partnership with Standard & Poor's.

MUTUAL FUNDS Search for funds, view BW ratings, and read Q&A's with fund managers.

COLUMNS Hot stocks, takeover plays, and the latest strategies for managing your money.

BusinessWeek online

For more investment data and the components of the production index, visit www.businessweek.com.