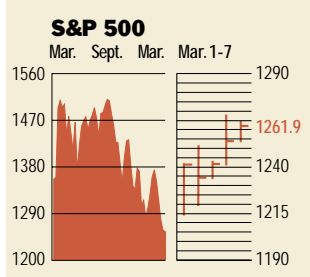


### Stocks



#### COMMENTARY

Up, up, up...the stock market rose for three days in a row beginning on March 6, putting the Dow, S&P and Nasdaq in positive territory for the week, gaining 2.2%, 1.8%, and 3.4%, respectively. Some reasons for the rally: Key Wall Street strategists, including Goldman Sachs's Abby Cohen, said it was time to buy stocks and investors expect the Fed to cut rates on March 20.

Data: Bloomberg Financial Markets  
BRIDGE Information Systems, Inc.

	Mar. 7	% change		
		Week	Year to date	Last 12 months
<b>U.S. MARKETS</b>				
S&P 500	1261.9	1.8	-4.4	-6.9
Dow Jones Industrials	10,729.6	2.2	-0.5	9.5
Nasdaq Composite	2223.9	3.4	-10.0	-54.1
S&P MidCap 400	510.9	2.7	-1.1	7.2
S&P SmallCap 600	220.8	2.8	0.6	0.4
Wilshire 5000	11,623.6	1.7	-4.5	-14.4
<b>SECTORS</b>				
BusinessWeek 50*	905.6	1.8	-6.7	-23.1
BusinessWeek Info Tech 100**	496.6	3.4	-12.2	-52.3
S&P/BARRA Growth	624.7	0.2	-9.1	-25.2
S&P/BARRA Value	636.8	3.2	0.1	15.6
S&P Energy	937.9	6.1	0.6	12.8
S&P Financials	156.5	2.3	-5.0	40.6
S&P REIT	87.5	1.8	-0.6	23.3
S&P Transportation	715.2	1.2	2.5	46.5
S&P Utilities	335.2	2.6	-4.4	44.7
GSTI Internet	158.5	3.9	-12.8	-78.6
PSE Technology	787.8	5.0	-3.3	-35.0

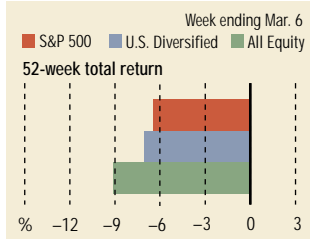
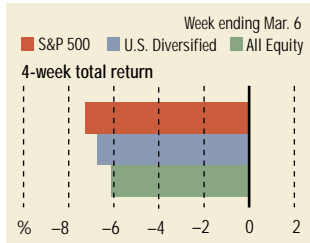
\*Mar. 19, 1999 = 1000 \*\*Feb. 7, 2000 = 1000

	Last month %	Last 12 months %	
<b>BEST-PERFORMING GROUPS</b>			
Engineering & Constr.	23.7	Tobacco	150.1
Conglomerates	12.1	Engineering & Constr.	148.7
Gold Mining	11.9	Savings & Loans	114.5
Metals	10.7	Homebuilding	109.2
Oil & Gas Drilling	9.9	Food Wholesalers	106.1

	Mar. 7	% change		
		Week	Year to date	Last 12 months
<b>GLOBAL MARKETS</b>				
S&P Euro Plus (U.S. Dollar)	1318.1	2.1	-7.5	-14.9
London (FT-SE 100)	6001.8	1.4	-3.5	-6.4
Paris (CAC 40)	5483.7	2.2	-7.5	-13.6
Frankfurt (DAX)	6305.6	1.6	-2.0	-21.1
Tokyo (NIKKEI 225)	12,723.9	-1.2	-7.7	-35.6
Hong Kong (Hang Seng)	14,177.4	-4.1	-6.1	-21.0
Toronto (TSE 300)	8301.8	2.8	-7.1	-11.9
Mexico City (IPC)	6331.3	5.0	12.0	-20.9
<b>FUNDAMENTALS</b>				
S&P 500 Dividend Yield	1.26%	1.26%	1.24%	
S&P 500 P/E Ratio (Trailing 12 mos.)	25.6	25.6	28.4	
S&P 500 P/E Ratio (Next 12 mos.)*	21.3	21.4	22.4	
First Call Earnings Revision*	-4.20%	-4.36%	0.21%	
<b>TECHNICAL INDICATORS</b>				
S&P 500 200-day average	1401.2	1406.3	Negative	
Stocks above 200-day average	68.0%	67.0%	Neutral	
Options: Put/call ratio	0.69	0.70	Neutral	
Insiders: Vickers Sell/buy ratio	2.53	2.47	Negative	

\*First Call Corp.

### Mutual Funds



Data: Standard & Poor's

### EQUITY FUND CATEGORIES

4-week total return	%	52-week total return	%
<b>Leaders</b>			
Precious Metals	3.1	Financial	44.7
Natural Resources	1.4	Mid-cap Value	31.8
Real Estate	0.1	Real Estate	30.4
Mid-cap Value	-0.2	Natural Resources	26.4
<b>Laggards</b>			
Technology	-20.0	Technology	-53.8
Communications	-17.4	Communications	-50.4
Small-cap Growth	-11.8	Japan	-41.2
Large-cap Growth	-10.6	Small-cap Growth	-36.2

### EQUITY FUNDS

4-week total return	%	52-week total return	%
<b>Leaders</b>			
Rydex Dynamic Venture 100	47.9	Potomac Internet Short	110.8
ProFunds UltraShort OTC	47.5	Schroder Cap. Micro Cap	97.7
Potomac Internet Short	36.1	Fidelity Select Insurance	84.4
Potomac OTC Short	22.3	Boston Partners Long/Short	75.6
<b>Laggards</b>			
Berkshire Technology	-39.3	ProFunds UltraOTC Inv.	-87.3
Berkshire Focus	-39.3	Potomac Internet Plus	-86.1
Van Wagoner Emerging Gr.	-39.0	Jacob Internet	-85.6
Van Wagoner Technology	-38.7	ING Internet A	-82.1

### Interest Rates

	KEY RATES		
	Mar. 7	Week ago	Year ago
<b>MONEY MARKET FUNDS</b>			
	5.34%	5.45%	5.43%
<b>90-DAY TREASURY BILLS</b>			
	4.67	4.85	5.83
<b>1-YEAR TREASURY BILLS</b>			
	4.42	4.47	6.17
<b>10-YEAR TREASURY NOTES</b>			
	4.91	4.92	6.38
<b>30-YEAR TREASURY BONDS</b>			
	5.31	5.34	6.17
<b>30-YEAR FIXED MORTGAGE†</b>			
	6.98	6.99	8.29
†BanQuote, Inc.			
<b>BLOOMBERG MUNI YIELD EQUIVALENTS</b>			
Taxable equivalent yields on AAA-rated, tax-exempt municipal bonds, assuming a 31% federal tax rate.			
	10-yr. bond	30-yr. bond	
<b>GENERAL OBLIGATIONS</b>			
	4.34%	5.06%	
<b>TAXABLE EQUIVALENT</b>			
	6.29	7.33	
<b>INSURED REVENUE BONDS</b>			
	4.44	5.26	
<b>TAXABLE EQUIVALENT</b>			
	6.43	7.62	

### THE WEEK AHEAD

**RETAIL SALES** *Tuesday, Mar. 13, 8:30 a.m. EST* ▶ Retail sales likely grew 0.4% in February, says the median forecast of economists polled by Standard & Poor's MMS, a unit of The McGraw-Hill Companies. Excluding auto sales, buying likely grew 0.2%. In January, total sales rose 0.7%, while nonauto receipts rose 0.8%.

**BUSINESS INVENTORIES** *Wednesday, Mar. 14, 8:30 a.m. EST* ▶ Inventories likely increased 0.3% in January, after growing 0.1% in December.

**EXPORT-IMPORT PRICES** *Thursday, Mar. 15, 8:30 a.m. EST* ▶ Export prices in February are expected to have increased by 0.1%, while import prices likely held steady.

**CURRENT ACCOUNT** *Thursday, Mar. 15, 10 a.m. EST* ▶ The U.S. current account deficit probably widened to about \$118 billion in the fourth quarter, from \$113.8 billion in the third.

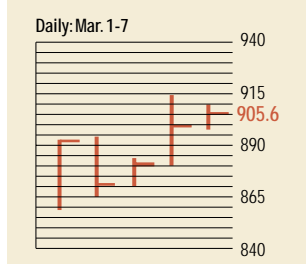
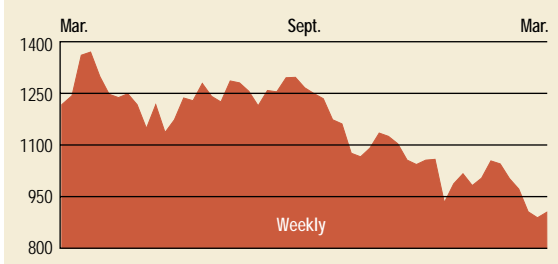
**HOUSING STARTS** *Friday, Mar. 16, 8:30 a.m. EST* ▶ Housing starts in February

probably fell to an annual rate of 1.58 million, from 1.65 million in January.

**INDUSTRIAL PRODUCTION** *Friday, Mar. 16, 9:15 a.m. EST* ▶ Factory output in February likely fell 0.2%. The average operating rate likely fell from 80.2%, to 79.9%.

**PRODUCER PRICE INDEX** *Friday, Mar. 16, 8:30 a.m. EST* ▶ Producer prices of finished goods likely rose 0.1% in February. Core prices, which exclude food and energy, likely grew by a similar 0.1%.

## The BusinessWeek Fifty

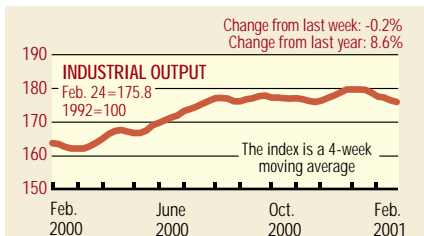


The BW 50 got a lift from the tech rally this week as bottom-fishing investors scooped up beaten-down shares. Biggest winner: Dell Computer, up 18.6% after a Merrill Lynch analyst reiterated a "buy" on the stock. Coming in second was Applied Materials, up 17.9%, which benefitted from a chip-stock rally starting on March 1. Biggest loser: Applied Biosystems Group, down 17.2%, suffering the blow from a biotech-sector hit.

### COMPANY PERFORMANCE

Rank	Company	% change		Rank	Company	% change	
		Week	Since 3/1/00			Week	Since 3/1/00
1	Microsoft	2.9	-33.2	26	Intel	15.3	-43.1
2	AOL Time Warner	2.9	-20.5	27	Tribune	2.5	9.5
3	Cisco Systems	1.3	-63.6	28	Xilinx	17.2	-39.0
4	Oracle	-2.0	-47.9	29	Enron	2.2	1.4
5	EMC	3.1	-30.1	30	Lexmark International	0.1	-56.3
6	Citrix Systems	-1.7	-75.4	31	Omnicom Group	1.9	-1.8
7	Morgan Stanley Dean Witter	2.5	-11.3	32	America Online	2.9	-20.5
8	Gap	-4.0	-45.4	33	Guidant	0.5	-25.2
9	Lucent Technologies	10.0	-80.2	34	MBNA	2.1	45.2
10	Converse Technology	11.7	-18.2	35	Pfizer	-6.8	31.6
11	Sun Microsystems	11.0	-54.9	36	Solectron	6.6	-17.6
12	Biogen	-7.8	-40.0	37	Gateway	3.0	-74.6
13	Charles Schwab	-2.4	-34.2	38	Wells Fargo	3.2	47.7
14	Home Depot	2.8	-21.4	39	General Dynamics	5.7	70.1
15	Dell Computer	18.6	-39.7	40	Texas Instruments	17.6	-57.7
16	Tellabs	4.9	-12.9	41	Capital One Financial	3.2	51.3
17	Network Appliance	-5.5	-70.4	42	General Electric	-1.1	5.0
18	Medtronic	-4.3	-0.3	43	Kansas City Southern Industries	-1.1	220.8
19	Amgen	-1.2	9.4	44	Wal-Mart Stores	1.2	3.5
20	Compuware	11.5	-46.5	45	Paccar	7.5	15.8
21	Applied Materials	17.9	-46.0	46	Applied Biosystems Group	-17.2	-46.0
22	Tyco International	2.9	52.0	47	Merck	-7.2	24.0
23	Computer Associates	-4.8	-55.2	48	Adobe Systems	-1.3	-42.8
24	Best Buy	1.3	-24.5	49	Reliant Energy	-1.5	102.3
25	Qualcomm	5.1	-58.5	50	Citigroup	2.6	30.3

## BW Production Index



The production index fell for the fourth straight week. Before calculation of the four-week moving average, the index moved down from 176 to 175.6. After seasonal adjustments, autos led the decline, as manufacturers predict a 12.5% first-half drop in production in a move to reduce large levels of inventory. Truck assemblies, coal, and rail-freight traffic were also down this week. Production of steel, electric power, crude-oil refining, and lumber all increased for the week.

Information on each of the index components is at [www.businessweek.com](http://www.businessweek.com). BW production index Copyright 2000 by The McGraw-Hill Companies

## Online Resources

**BW 50** Track the index and the companies in it all day long. Plus: our exclusive Info Tech 100 index.

**BUSINESSWEEK INVESTING** Real-time market coverage and investment tools in partnership with Standard & Poor's.

**MUTUAL FUNDS** Search for funds, view BW ratings, and read Q&A's with fund managers.

**COLUMNS** Hot stocks, takeover plays, and the latest strategies for managing your money.

**BusinessWeek online**

For more investment data and the components of the production index, visit [www.businessweek.com](http://www.businessweek.com).